

COMMUNITY RISK MANAGEMENT PLAN 2021-2025

STATION RISK PROFILE 2021 DROITWICH

(Updated October 2021)



HEREFORD & WORCESTER
HWR
FIRE AND RESCUE SERVICE

Station Risk Profile 2021

Contents

1	Introduction	3
2	Droitwich Fire Station Overview.....	4
3	Incident Overview.....	6
4	Droitwich Fire Station Incident Occurrence	11
5	Risk Areas In Relation To Accidental Dwelling Fires.....	13
6	Road Traffic Collision Incidents.....	19
7	Other Potential Life Risks.....	21
8	Prevention and Protection Activities	25
9	Grade I and Grade II* Listed Buildings	27
	Appendix 1	30

Foreword

The Station Risk Profiles provide local detail about fire and other risks in each of the Service's 25 fire station areas. They include information about each fire station and the types of incidents they attend, and highlight the main areas at risk of accidental dwelling fire and other life risk incidents. Each Profile provides supporting information for the Community Risk Management Plan (CRMP) 2021-2025. Where appropriate, figures used in the Profiles are rounded to the nearest 100.

The Station Risk Profiles should be read in conjunction with two other supporting documents: the CRMP Risk Review 2018, which provides a spatial analysis of life risk data across the two counties, and the CRMP Demographic Profile 2018, which provides information about the characteristics of the local population. All documents can be found on the Service website.

1 Introduction

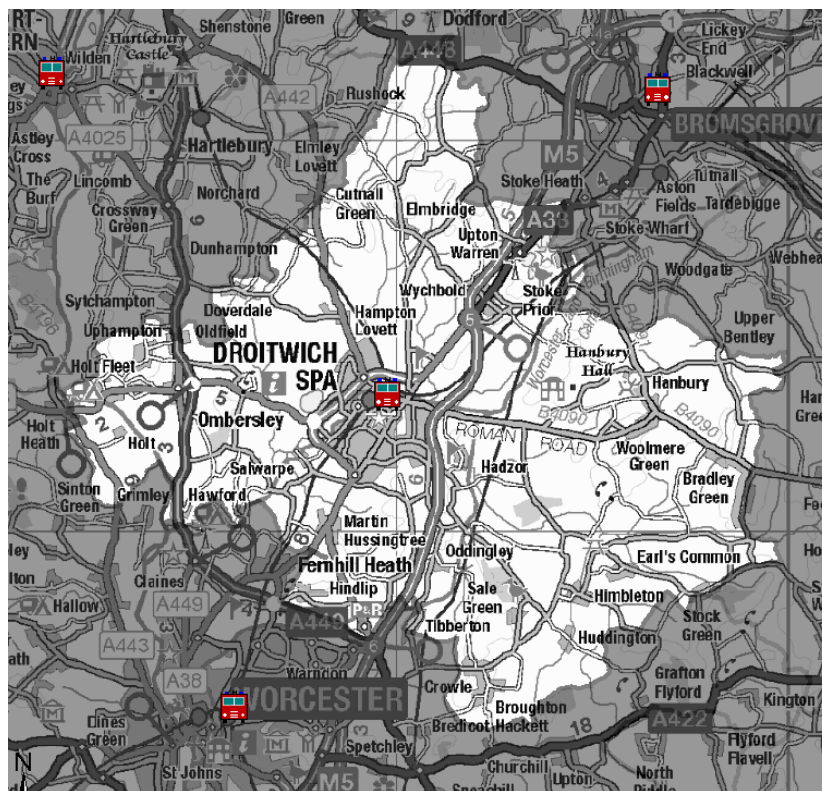
- 1.1 Station Risk Profiles are reviews of potential life risks in each of the Fire and Rescue Service's 25 fire station areas. They form part of the CRMP Risk Review, which looks at the major life risk incidents across the two counties - Accidental Dwelling Fires and Road Traffic Collisions.
- 1.2 The Station Risk Profiles use the information presented in the CRMP Risk Review 2018 to provide a focused overview of the risks within each station area. They include a review of the types of incidents attended, and provide maps highlighting areas likely to be at greater risk of Accidental Dwelling Fires (ADFs) and Road Traffic Collisions (RTCs). Other potential risks such as outdoor fires and water incidents are also included where appropriate. Finally, there is an overview of the range of prevention and protection activity to be carried out within the station area, including a list of relevant heritage sites.
- 1.3 Station Commanders, crews and the Community Risk Department can use the information, in conjunction with the National Fire Chiefs Council Community Risk Calendar (Appendix 1) to inform their planning for prevention and protection work within the station area over a 12 month period.
- 1.4 There are a number of development plans for housing across the two counties up to 2030. Around 50,000 new homes are planned to be built up to 2031, a rate of about 4,500 per year. Most of the housing development is planned for sites within and around the larger urban areas, particularly the two cities of Worcester and Hereford and other main towns. It will be important to monitor the potential impact of this growth on our services, as population and vehicle numbers will continue to increase in these areas over this period. For example, there may be an increased need for more community safety and road safety activities in these areas, and with more traffic on the roads, there may be an impact on how quickly fire engines can reach incidents. Over the next few years, incident numbers and the types of incidents occurring in newly built areas will be monitored to help to assess any potential impact.
- 1.5 The current version of Station Risk Profile (dated October 2021) uses 12 years of incident data (2009/10-2020/21), following data quality control carried out between May 2019 and January 2020. The Fire Risk map has also been updated to include 2019/20 incident data, which is used to help identify those local neighbourhoods at potentially higher fire risk in the station area. This is also cross-referenced against the characteristics of households in station areas using Mosaic data¹, which helps to identify those households at potentially higher fire risk.
- 1.6 Heat maps have also been prepared for RTCs and Water Rescues (where relevant) to highlight areas of potentially higher risk. The heat maps will be updated each year, where appropriate. A full update of the risk maps will also be prepared when new demographic data is available from the 2021 Census, and when updated Mosaic data becomes available.

¹ Mosaic data provides a detailed and accurate understanding of each citizen's location, their demographics, lifestyles and behaviours.

2 Droitwich Fire Station Overview

- 2.1 Droitwich Fire Station is located at Friar Street just outside the town centre. The Fire Station covers a large area of around 60 square miles, which houses 35,460 residents² living in 16,000 homes. The latest demographic data for Droitwich estimates that 34 per cent residential housing has a head of the household aged over 66. 15 per cent of residential households have a single elderly resident³.
- 2.2 The Station has two fire engines (one Pump and one Ultra Heavy Rescue Pump) and an Incident Support Vehicle for incidents where additional Specialist equipment is required or BA main control. Crews are trained as Water First Responders. In addition the Station has multiple USAR Modules and associated Prime Movers. These national assets could potentially be deployed anywhere in the country.
- 2.3 The Station is one of the busiest in the two counties. During 2020/21 there were 316 incidents within the Station ground, approximately 5 per cent of the Service's total activity. The Station also receives and provides operational support to and from neighbouring Fire Stations as well as to locations further afield if needed.
- 2.4 Map 1 shows a general overview of the Fire Station ground. The shape of the Station ground is based on areas nearest to the Station as determined by the Service's Fire Control.

Map 1: Overview of Droitwich Fire Station ground



² Population data is a mid-2019 estimate which can be found on the nomis website.

³ Household estimates are taken from data extracts provided by Experian's Mosaic Public Sector 2019 and demographic data from Experian's Mosaic Public Sector 2018.

Station Crewing Systems

- 2.5 Within Hereford & Worcester Fire and Rescue Service, there are different ways of crewing the Fire Stations. This is determined by the level of risk associated with a Station area and the needs of the local community. The busiest Fire Stations are permanently crewed 24 hours a day (known as the Wholetime Duty System). The less busy Fire Stations are crewed by On-Call firefighters, who live or work locally and can respond to emergency calls quickly when they are needed (known as the Retained Duty System or RDS). The other duty system is called Wholetime Day Duty, where either the Fire Station or a Fire Engine is permanently crewed for 12 hours during the day and by On-Call firefighters at night.
- 2.6 The two fire engines at Droitwich Fire Station are crewed by a combination of the Wholetime Day Duty System and the Retained Duty System. The first fire engine is immediately available during the day (between 07:00 and 19:00) seven days a week then at night an RDS crew responds from home. The second fire engine is RDS crewed and can usually respond within six minutes of the crew being alerted. The Wholetime Day Duty crew are also trained Urban Search And Rescue (USAR) technicians who are supported by an on call team who can respond to USAR deployments within 45 minutes.

3 Incident Overview

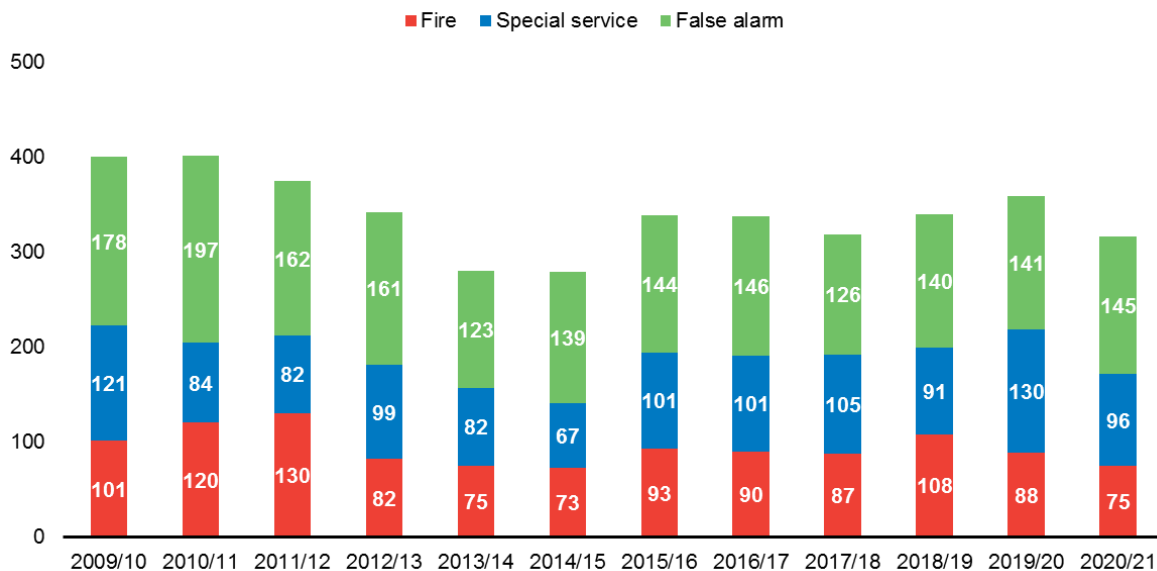
3.1 The Service attends a range of incidents that can be divided into three broad categories; Fires, Special Services and False Alarms. Each category has a range of incidents that pose different types and levels of risk to communities and to the firefighters who tackle them. The categories are shown below:

• Fires	these include dwelling fires, other building fires, outdoor fires and car fires
• Special Services	these incidents are those such as Road Traffic Collisions, flooding, person rescues, spills, leaks and animal rescues
• False Alarms	these are when the Service responds to fire alarms or phone calls where there is no actual incident

3.2 Over the last 12 years (1 April 2009 to 31 March 2021), crews at Droitwich Fire Station attended 4,083 incidents. The majority of these calls were to false alarms (44.13 per cent), three out of ten were special services (28.39 per cent) and one in three was to a fire (27.48 per cent). Over the 12 years, there was an overall decrease of about 21 per cent.

3.3 Graph 1 below provides further details.

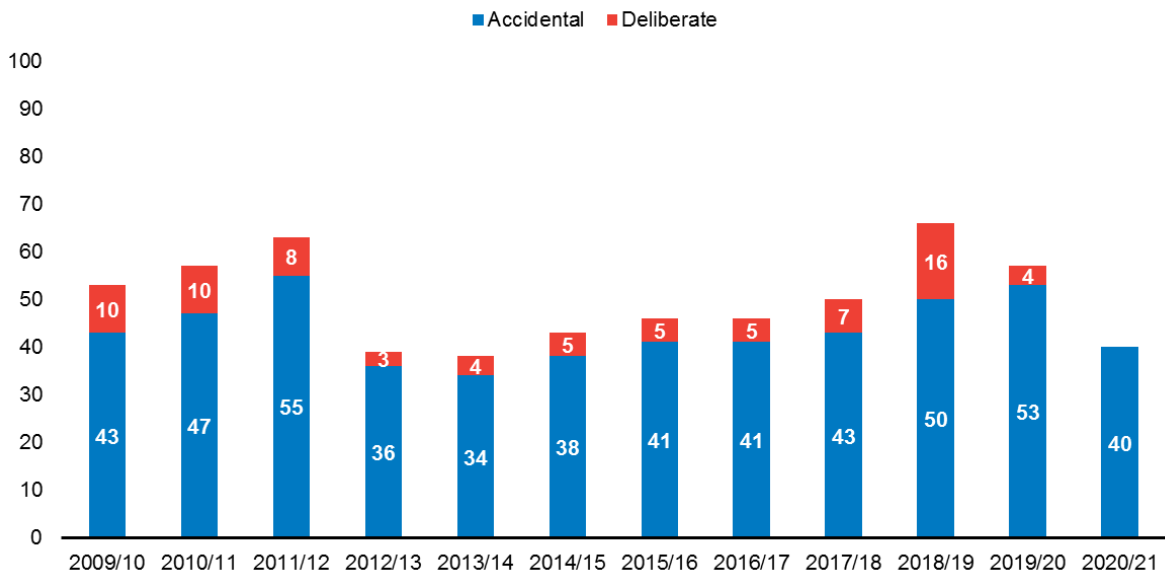
Graph 1: Droitwich Fire Station area – Incidents occurred 2009/10 to 2020/21



Fires

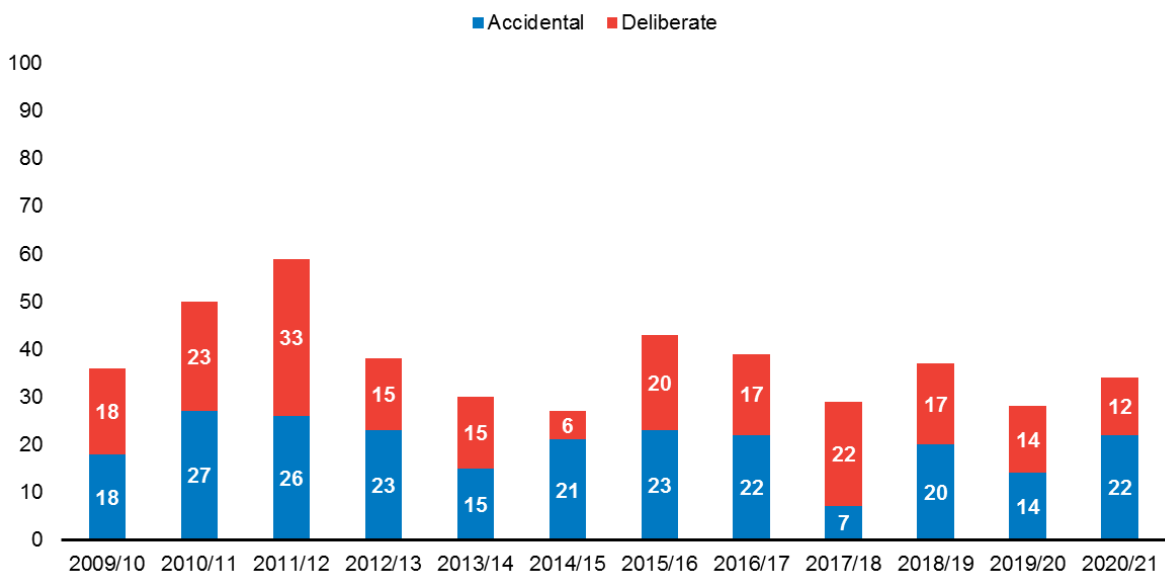
- 3.4 The Fires category is generally broken down into two main types; Primary Fires, which are mainly building fires and vehicle fires, and Secondary Fires, which are outdoor fires affecting areas such as grassland, woodland, crop fields and gardens. Primary Fires saw a decrease in the number of incidents recorded over the last 12 years by 24.53 per cent, whereas the number of Secondary Fires saw a smaller reduction by just 5.56 per cent.

Graph 2: Droitwich Fire Station area - Primary Fires 2009/10 to 2020/21



- 3.5 Graph 2 shows a breakdown of Primary Fires in Droitwich Fire Station area over the last 12 years. It shows that although the number of deliberate Primary Fires have fluctuated, overall it is a downward trend.

Graph 3: Droitwich Fire Station area - Secondary Fires 2009/10 to 2020/21

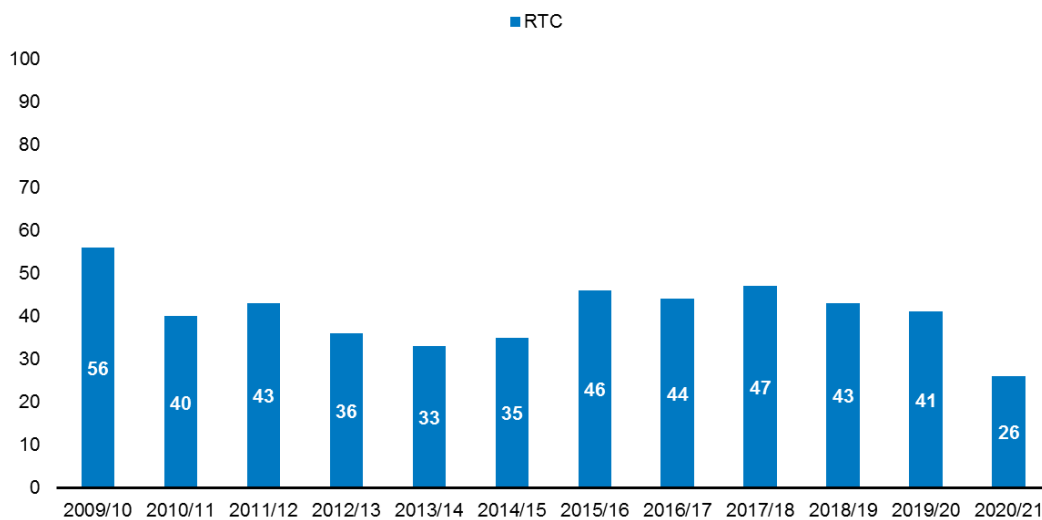


- 3.6 Graph 3 shows a breakdown of Secondary Fires in Droitwich Fire Station area over the last 12 years. Secondary Fires mainly involve loose refuse (typically a bin fire) and grassland fires, especially during warm summer months. The graph shows that the numbers of accidental and deliberate Secondary Fires varied from year to year.
- 3.7 Accidental Dwelling Fires are a particular risk to life for both householders and firefighters. These are discussed further in Section 5 later in this report.

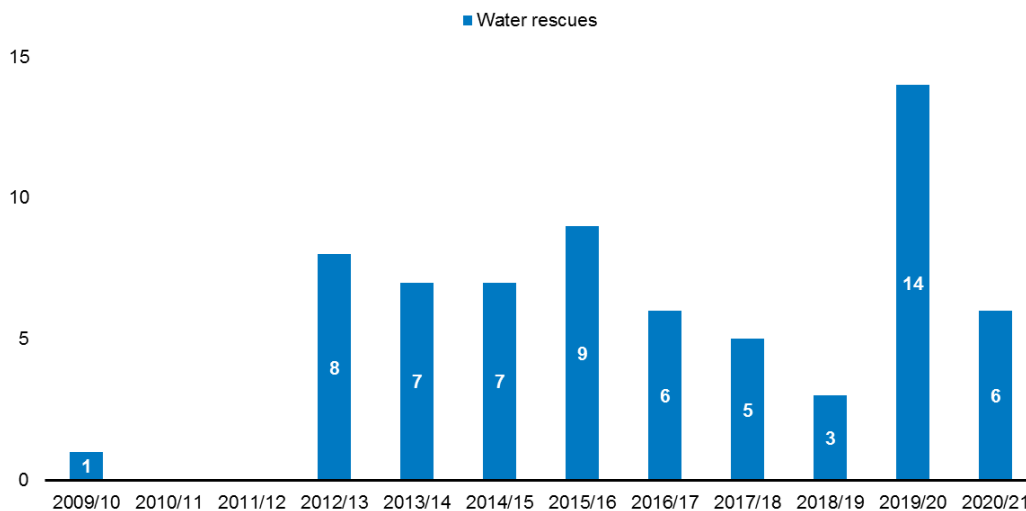
Special Service Incidents

- 3.8 In terms of Special Service incidents, the two main categories for Droitwich Fire Station area involving potential risk to life are Road Traffic Collisions (RTCs) and Water Rescues. Over the last 12 years, the number of RTCs attended fell by 53.57 per cent as shown in Graph 4 below. Over the same period, the number of incidents involving rescues from water increased. The highest, seen in 2019/20 due to two flooding events which occurred in November 2019 and February 2020. This is shown in Graph 5 below.

Graph 4: Droitwich Fire Station area – Road Traffic Collisions 2009/10 to 2020/21



Graph 5: Droitwich Fire Station area – Water Rescues 2009/10 to 2020/21

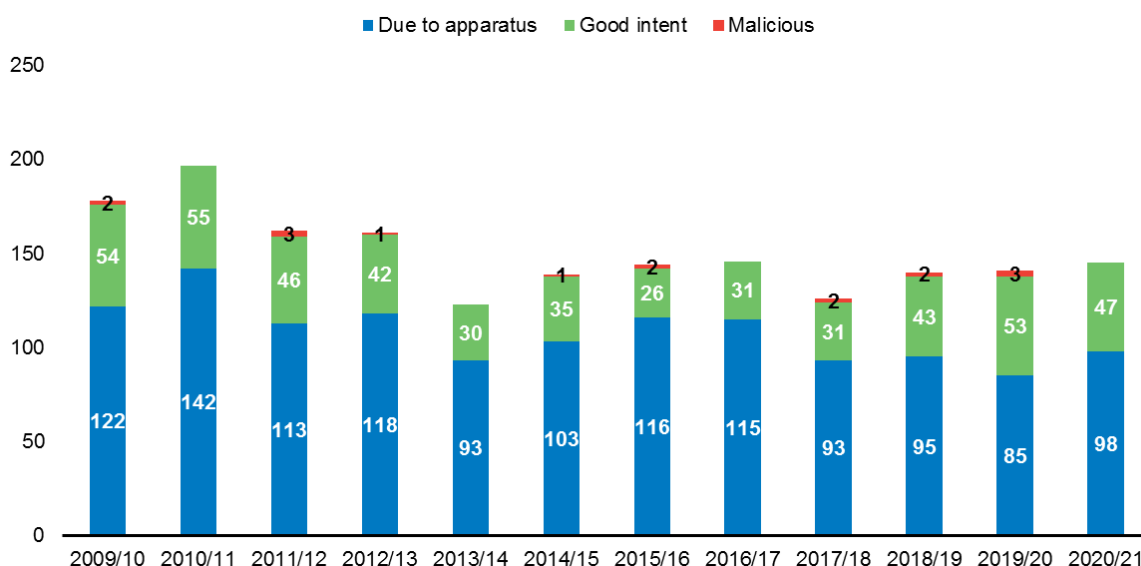


3.9 RTCs and Water Rescues are discussed further in Sections 6 and 7 respectively later in this report.

False Alarm Incidents

3.10 False Alarm incidents are categorised into False Alarm Malicious, False Alarm Good Intent and False Alarm due to Apparatus. Over the last 12 years, the total number of False Alarms attended decreased by 18.54 per cent as shown in Graph 6 below. The biggest decrease was seen in False Alarms Due to Apparatus.

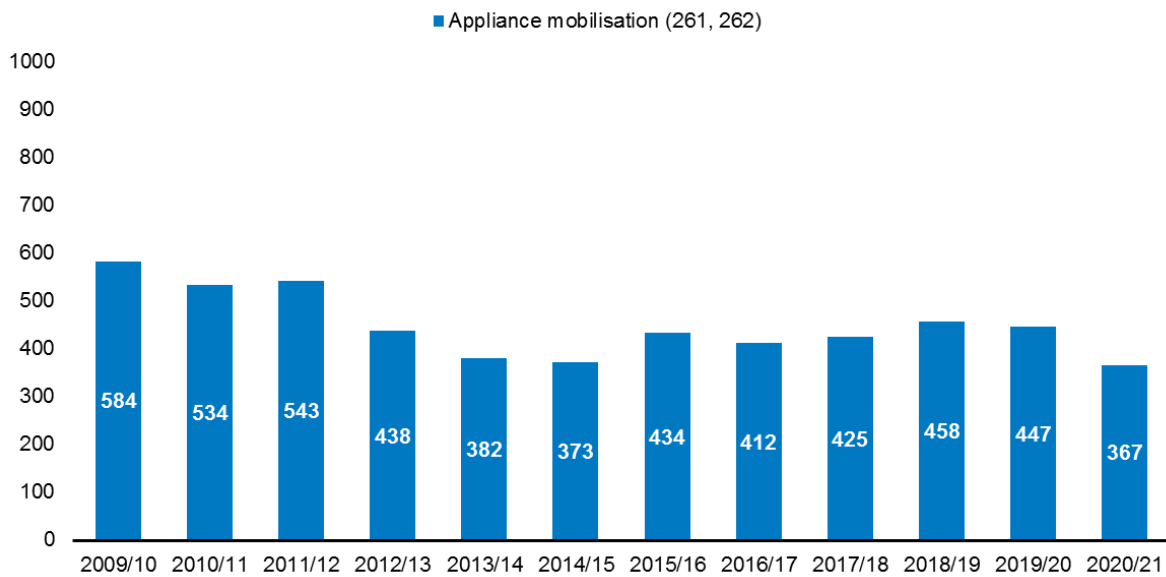
Graph 6: Droitwich Fire Station – False Alarms 2009/10 to 2020/21



Appliance Mobilisation

3.11 Although over the last 12 years (1 April 2009 to 31 March 2021) there were 4,083 incidents within Droitwich station area, Droitwich’s appliances have actually been mobilised 5,397 times. (This figure is a sum of the amount of times the stations appliances have attended an incident, for example, if two appliances from the same station attend one incident, this is counted as two).

Graph 7: Droitwich Fire Station Activity 2009/10 to 2020/21



This has been broken down into the Service's area and 'over the border' mobilisations in table below.

Table 1: Droitwich's appliances mobilisations 2009/10 – 2020/21

Mobilisation	2009 /10	2010/ 11	2011 /12	2012 /13	2013 /14	2014 /15	2015 /16	2016 /17	2017 /18	2018 /19	2019 /20	2020 /21
1st pump within station area	389	379	368	296	245	251	297	279	251	250	270	230
2nd pump within station area	17	18	15	10	8	12	7	11	15	14	14	16
1st pump in other station areas	91	75	92	59	51	58	41	39	60	73	66	51
2nd pump in other station areas	87	62	68	63	54	37	69	64	81	108	78	70
1st pump over the border	0	0	0	0	0	0	0	0	0	0	1	0
2nd pump over the border	0	0	0	1	1	0	0	1	0	0	0	0
NROB	-	-	-	1	4	1	5	5	1	3	1	
NOTR	-	-	-	8	19	14	15	13	17	10	17	
Total	584	534	543	438	382	373	434	412	425	458	447	367

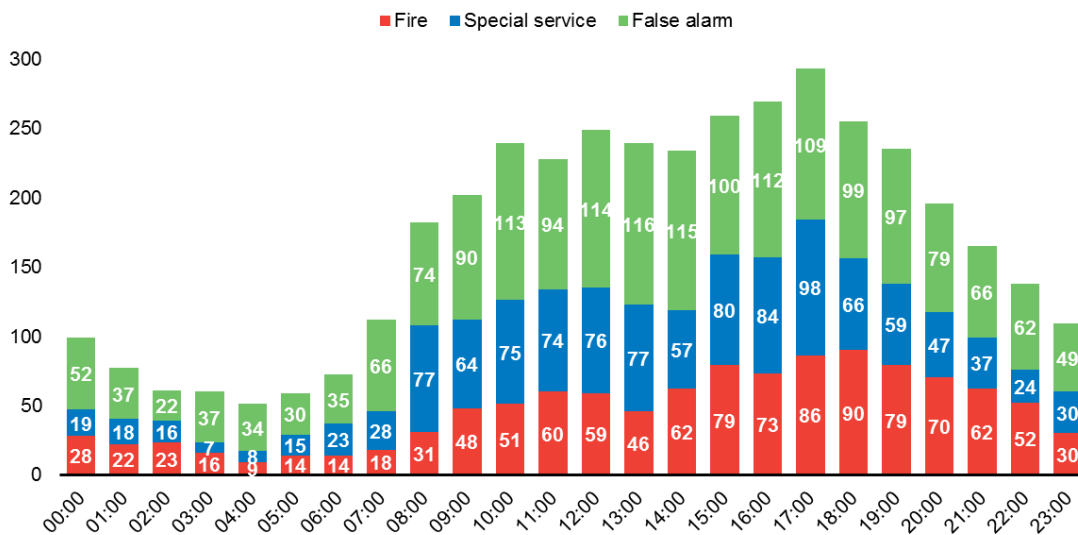
* Mobilisation as second, third, ..., *n* pump

Out of 5,397 Droitwich's appliance mobilisations, 3,662 were primarily located within Droitwich station area with 67.85 per cent, followed by Worcester's station ground with 11.56 per cent and Bromsgrove with 6.61 per cent.

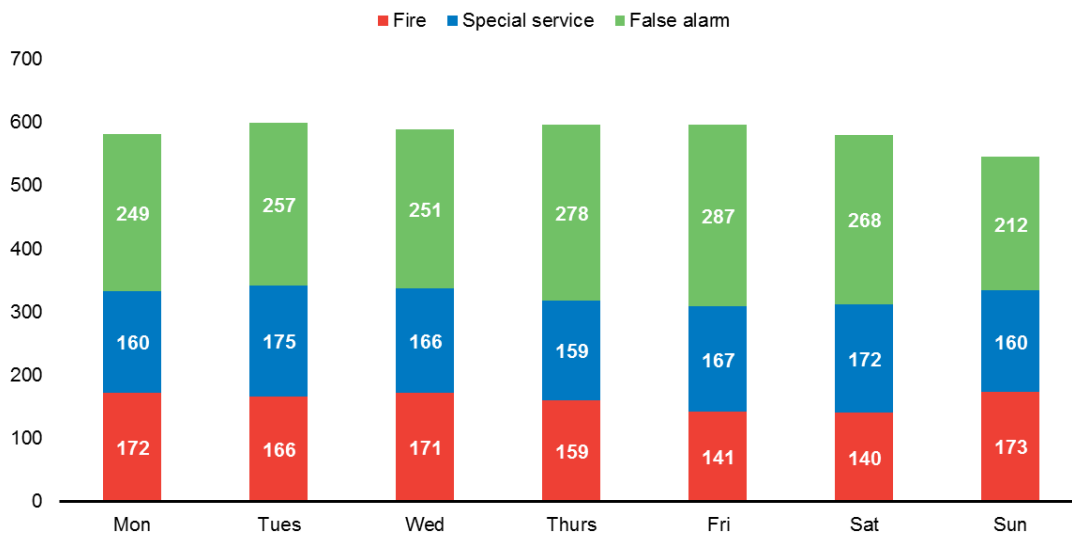
4 Droitwich Fire Station Incident Occurrence

- 4.1 It is important for Station Commanders at the Service’s Fire Stations to understand when incidents are more likely to happen, so that the right resources can be made available at the right time.
- 4.2 Using the last 12 years of incident data (2009/10 to 2020/21) for Droitwich Fire Station area, incidents can be analysed in detail by time, day and month. This can help to identify particular trends, such as if most incidents are occurring during daylight hours which helps Station Commanders in ensuring enough resources are in place.
- 4.3 The following graphs show the specific hours, days of the week and months when incidents occurred in Droitwich Fire Station area. Station Commanders will be able to examine the information closely to help identify any trends in incident types or occurrences, so that they can plan to address them with appropriate actions.

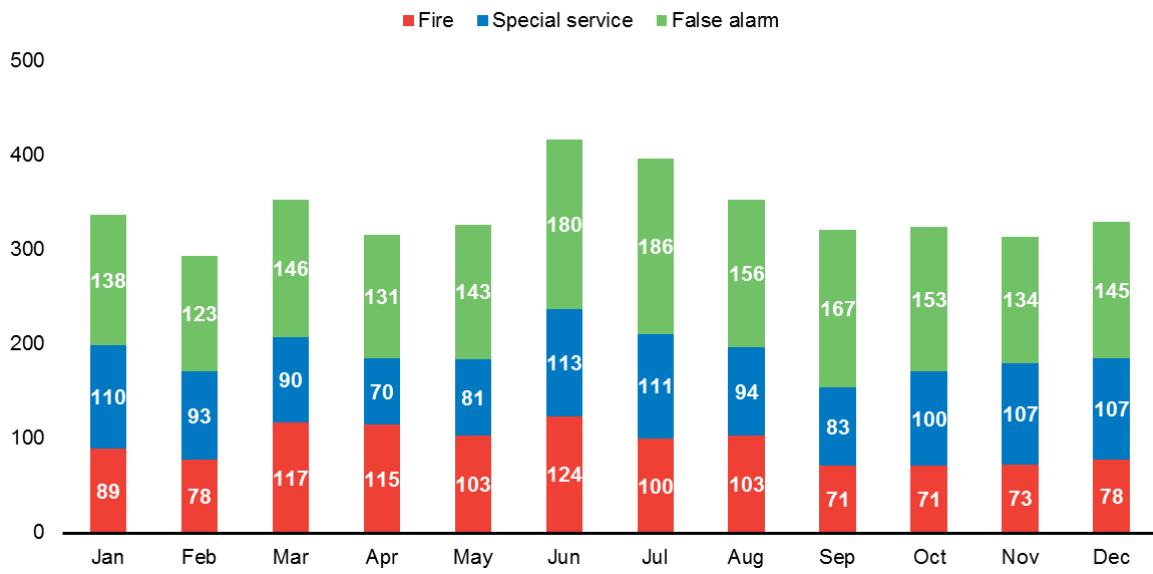
Graph 8: Droitwich Fire Station area - Hour of the Day Incidents Occurred 2009/10 to 2020/21



Graph 9: Droitwich Fire Station area – Day of the Week Incidents Occurred 2009/10 to 2020/21



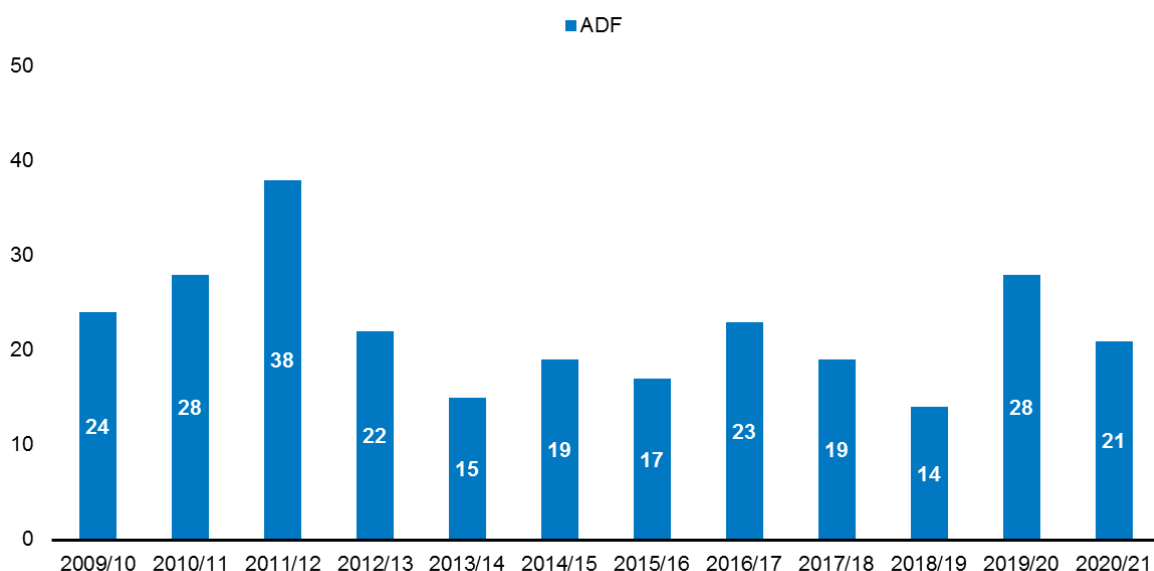
Graph 10: Droitwich Fire Station – Month of Year Incidents Occurred 2009/10 to 2020/21



5 Risk Areas In Relation To Accidental Dwelling Fires

5.1 This section looks specifically at Accidental Dwelling Fires and the potential risks within Droitwich Fire Station area. In 2020/21 there were 21 Accidental Dwelling Fires, this equates to just over 1 incident per every 1,000 households⁴. Accidental Dwelling Fires have the potential to pose the risk of serious injury or death for the occupants and also for the firefighters attending the incident.

Graph 11: Droitwich Fire Station area – Accidental Dwelling Fires 2009/10 to 2020/21



5.2 The CRMP Risk Review 2018 mapped the incidence of Accidental Dwelling Fires across the two counties and assigned risk ratings to highlight those areas that are at high, medium and low fire risk. This was worked out using a sophisticated Fire Risk Model, which is also used by Cumbria and Lancashire Fire and Rescue Services among others. Details of the calculations involved can be found in the CRMP Risk Review document.

5.3 The analysis for Droitwich Fire Station area shows that most areas are at low risk of Accidental Dwelling Fire. However, it also shows that a small number of areas were considered to be at medium risk; there were no high risk areas identified. This does not mean that living in a high risk area will lead to someone having an Accidental Dwelling Fire, but it does mean that high risk areas tend to have more fires than would normally be expected. The fire risk areas for 2017/18 to 2019/20 are mapped on Map 2 where the medium risk areas are shown in blue. Table 2 provides a list of those areas within Droitwich Fire Station ground that have been considered to be at medium risk at some point during the last five years by the Fire Risk Model.

⁴ Household estimates are taken from data extracts provided by Experian's Mosaic Public Sector 2019 and demographic data from Experian's Mosaic Public Sector 2018.

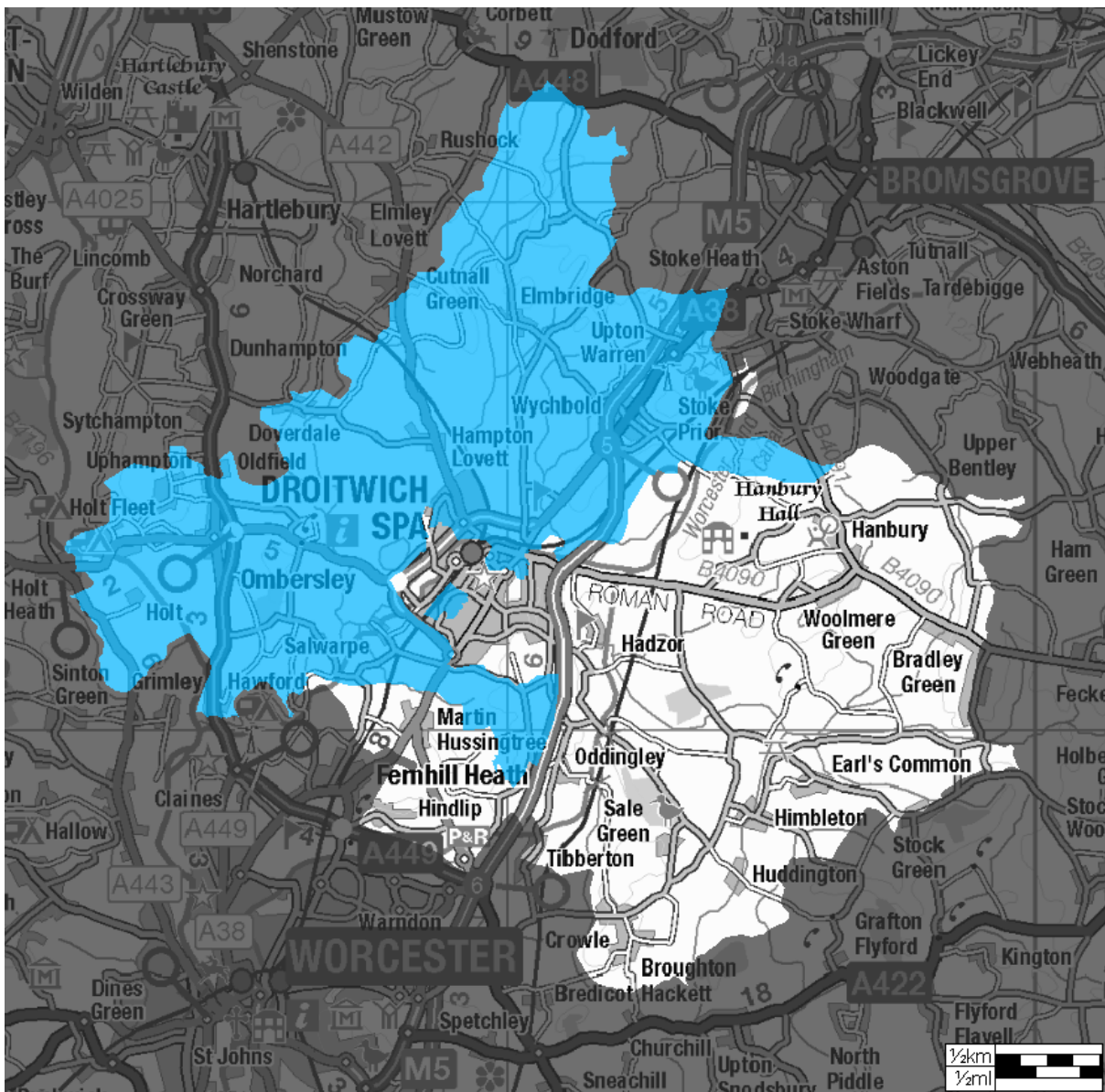
Table 2: Areas most at risk of fire 2015/18 – 2017/20

Local Authority	LSOA Name	Local area name	LSOA Mosaic Classification ⁵	Risk Level 2015/2018	Risk Level 2016/2019	Risk Level 2017/2020
Wychavon	Droitwich East	Netherwich	N Vintage Value	M	M	M
Wychavon	Droitwich West	Westlands	M Family Basics	M	M	M
Wychavon	Droitwich West	Berry Hill	M Family Basics	M	M	M
Wychavon	Ombersley	Ombersley	A Country Living	M	M	M
Wychavon	Lovett and North Claines	Cutnall Green & Elmley Lovett	A Country Living	M	M	M
Wychavon	Dodderhill	Wychbold	A Country Living	M	M	M
Wychavon	Droitwich South West	Witton School Area & Worcester Road	B Prestige Positions	M	M	L
Wychavon	Droitwich Central	Newtown, Westacre Middle School Area	E Suburban Stability	M	M	L
Wychavon	Droitwich South West	Chawson	M Family Basics	L	L	M

5.4 The local area Chawson has increased from a low risk area to a medium by the Fire Risk Model. The most common household characteristic for this area is Family Basics. The Witton School Area & Worcester Road and Newtown, Westacre Middle School Area have both decreased from a medium risk area to a low, however community risk activity is still recommended in these areas to prevent the risk from increasing in the future and in the other medium risk areas identified in Table 2. More detailed information on individual households to increase the accuracy of targeting can be requested.

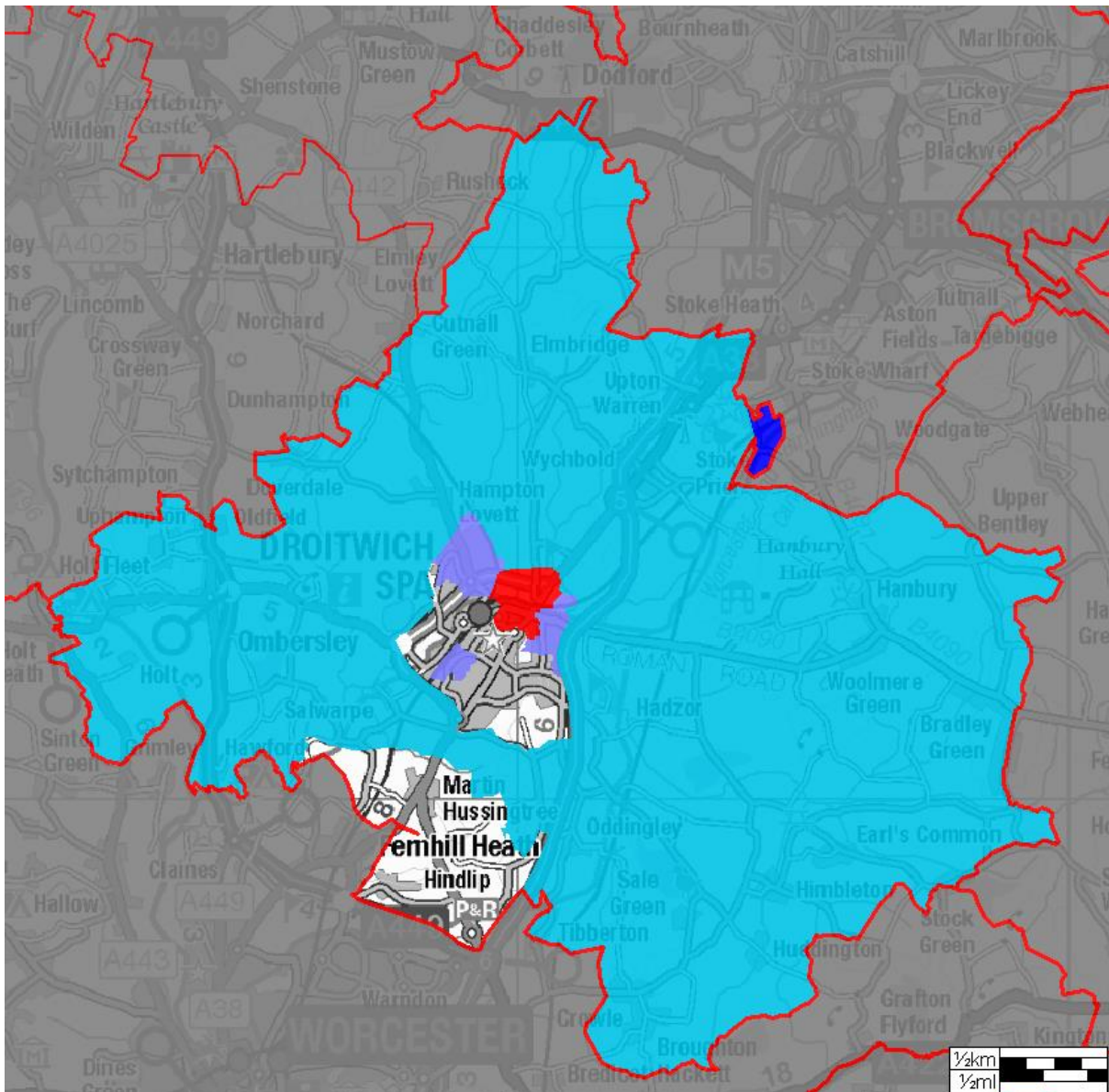
⁵ LSOA Mosaic classification was assigned by using the most common household characteristic seen in each LSOA using Experian Mosaic Public Sector 2019. More detail on individual postcodes for more accurate targeting can be requested.

Map 2: Droitwich Fire Station area – Risk areas 2017/18 to 2019/20



- 5.5 In addition to mapping areas at risk, the CRMP Risk Review also examined the characteristics of households that tend to have more Accidental Dwelling Fires than expected given the relative number of households in each group – that is, Groups A, C, G, J, M, N, and O. When examining these groups in detail, it can be seen that those households share characteristics of higher levels of dependency, disadvantage and vulnerability (Groups M, N and O), they are now being joined by households in the less populated rural areas (Groups A and G). Group C has not been mapped and further details on this can be found in the CRMP Risk Review, instead focus has been on six groups (A, G, J, M, N and O) and these are shown on Map 3.

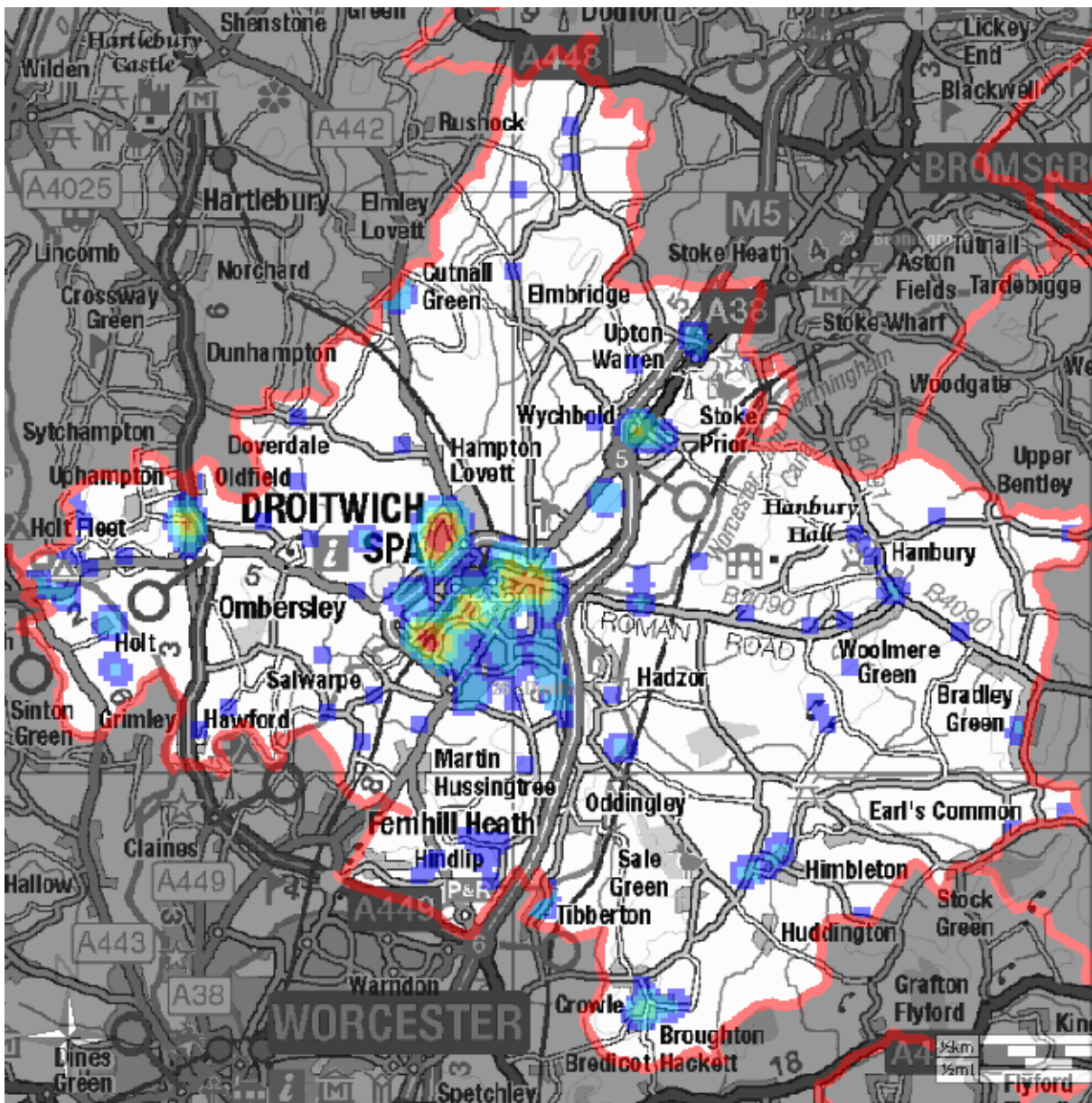
Map 3: At risk LSOA's by Mosaic Group 2017/18 to 2019/20



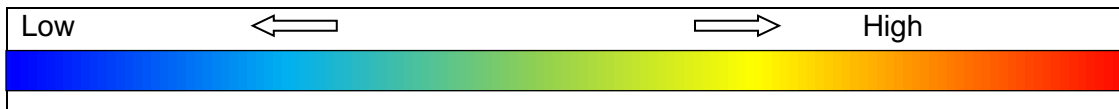
- A – Country Living
- G – Rural Reality
- J – Rental Hubs
- M – Family Basics
- N – Vintage Value
- O – Municipal Challenge

5.6 More information on these Mosaic group types can be found in the CRMP Fire Risk Review.

Map 4: Droitwich Fire Station area – Accidental Dwelling Fires (2009/10 to 2020/21)



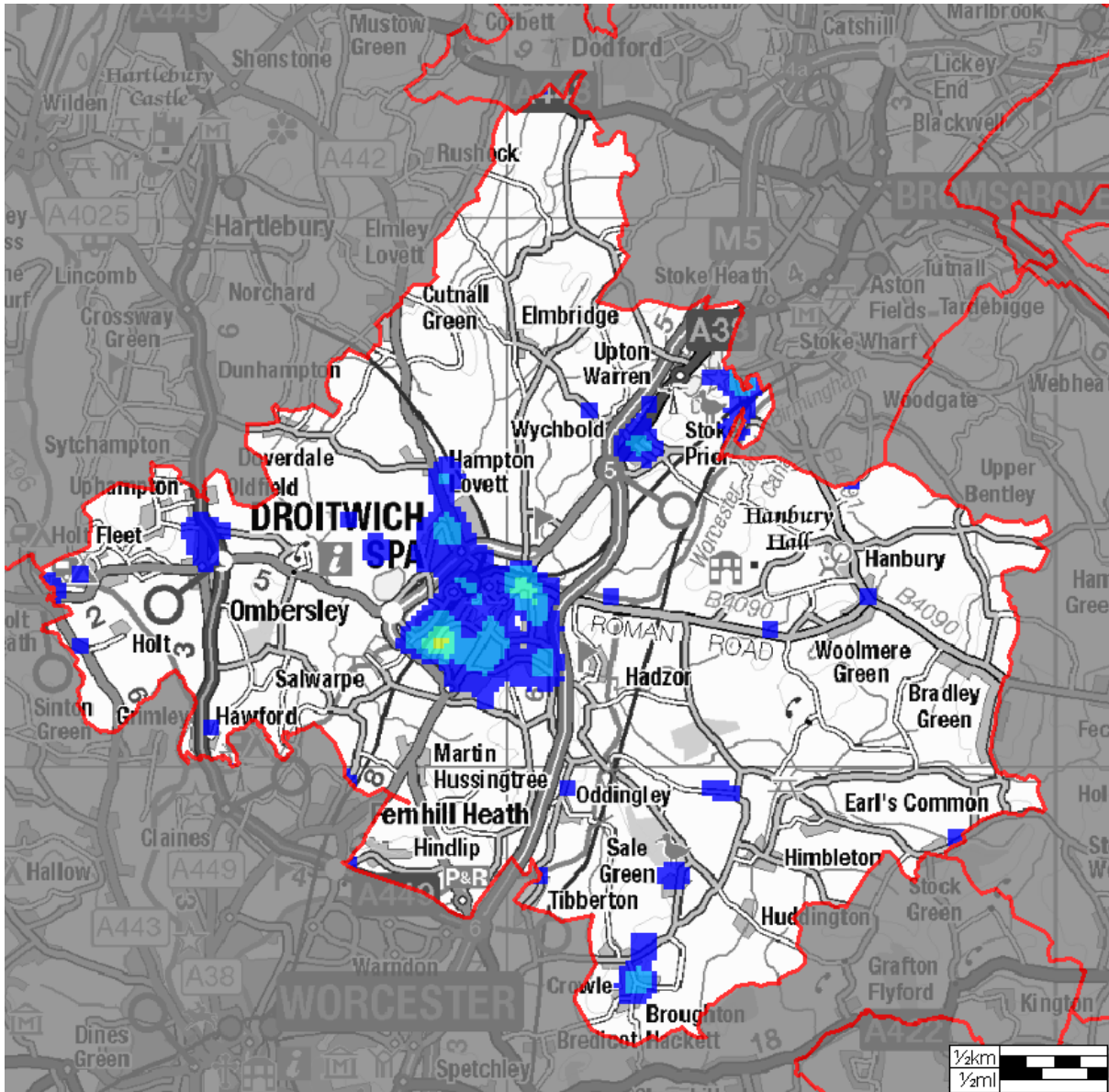
Key



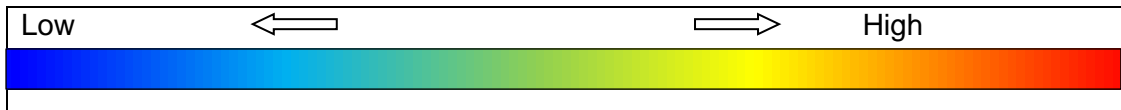
- 1.1 Map 4 shows the concentration of Accidental Dwelling Fires in Droitwich Station Ground area showing data between (2009/10 to 2020/21). This correlates with Map 5 which shows where the Community Risk department has been targeting the Safe and Well Checks between 2017/18 to 2019/20.
- 1.2 Mapping Accidental Dwelling Fires and those households that tend to have more Accidental Fires than others provides Station Commanders and Community Risk officers with valuable information that will help to prioritise how they target their prevention and protection activities. When examining the local areas at potential risk, the maps can be expanded to show street level information about households and

risks. Additional information about how to best contact those households at potential risk will also be available through the Community Risk department.

Map 5: Community Risk Activity – Safe and Well Checks 2017/18 to 2019/20



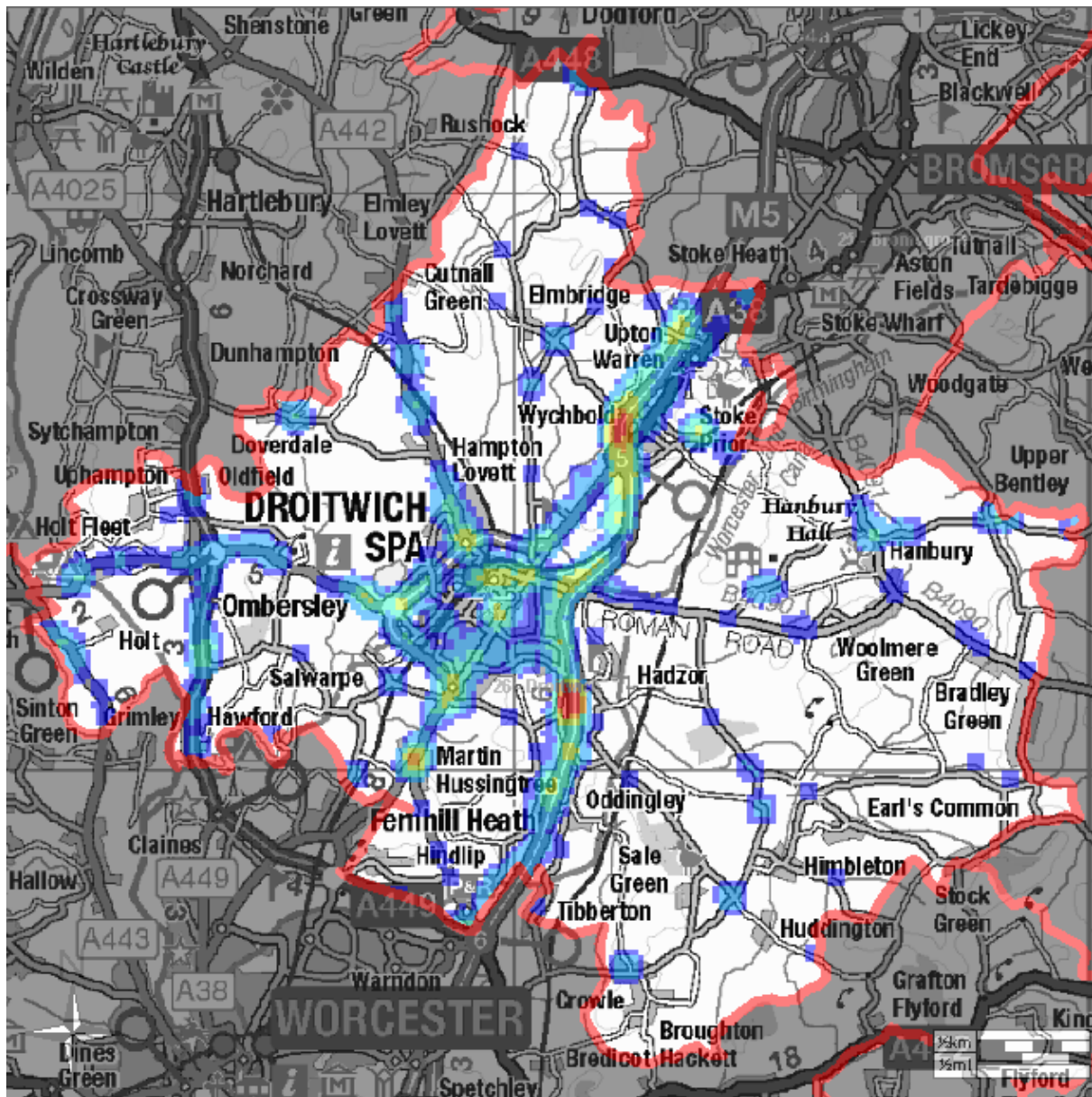
Key



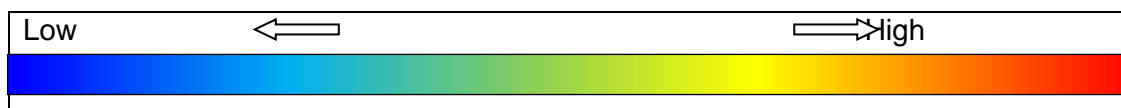
6 Road Traffic Collision Incidents

- 6.1 The CRMP Risk Review 2018 identified Droitwich Fire Station area as a low risk area for Road Traffic Collisions (RTCs) in 2017/18 – 2020/21. This was determined using a risk model based on the number of RTC incidents attended and the severity of those incidents in terms of injury to persons. Map 6 below shows the location of all RTCs that occurred within Droitwich Fire Station area over the last 12 years (2009/10 to 2020/21) at 100 m grid cell. The hotspots tend to be concentrated around Droitwich town centre and along the M5 motorway and its junctions.

Map 6: Droitwich Fire Station area – RTC Hotspots 2009/10 to 2020/21



Key



- 6.2 The map shows hotspots ranging from **high** (i.e. where RTCs occurred most frequently) graduating to **low** (i.e. where RTCs occurred least frequently). Where no colour is shown, this indicates that HWFRS have not attended any RTC incidents in the last 12 years.
- 6.3 The maps can be expanded to show individual roads and the location and type of each RTC incident attended. This will provide Station Commanders and Community Risk officers with important data when working with local authority and road safety partners.

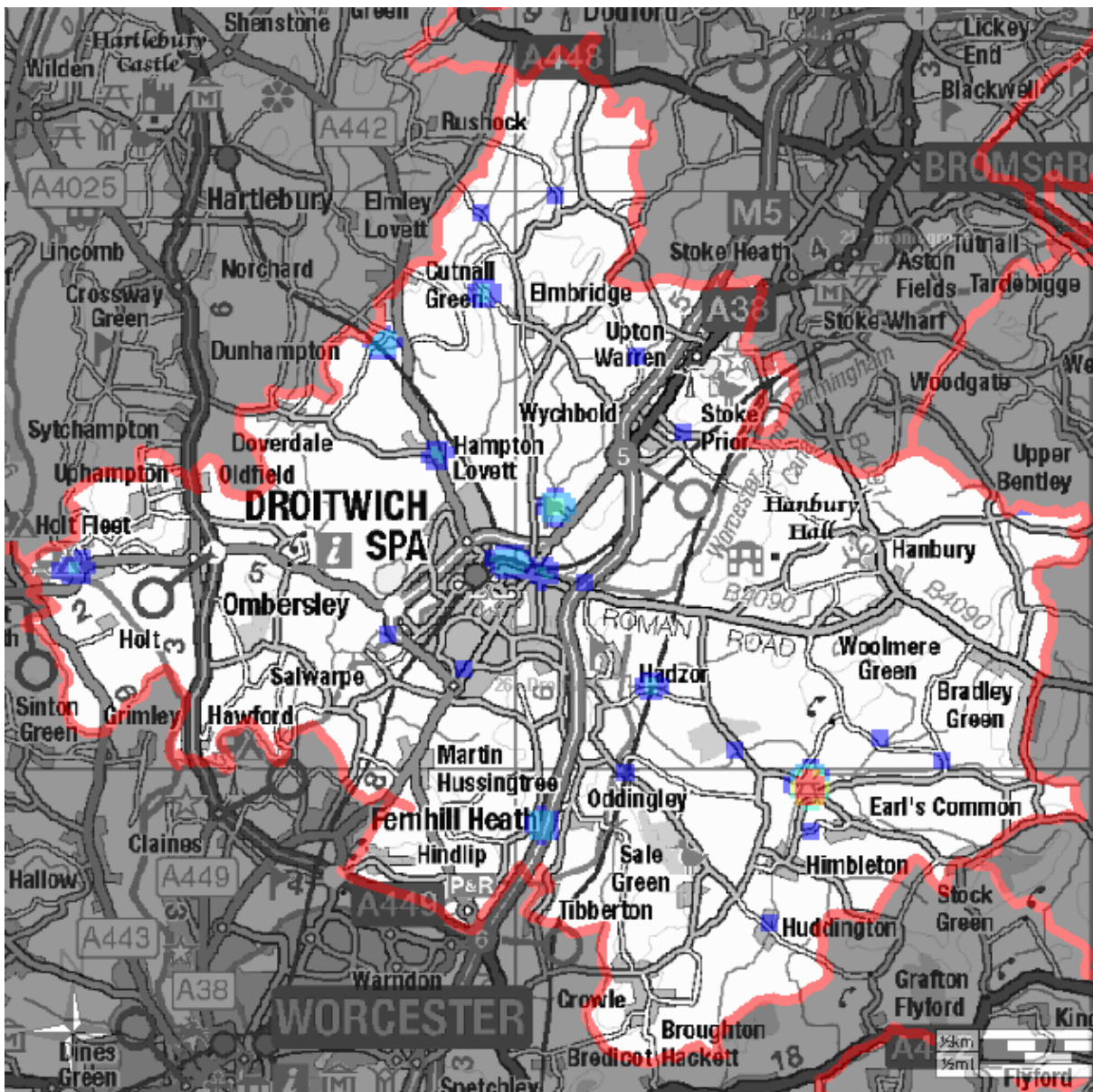
7 Other Potential Life Risks

- 7.1 In addition to Accidental Dwelling Fires and Road Traffic Collisions, the Service attends a number of other incidents which have the potential to harm life and property. Among such incidents are water rescues and weather-related issues such as wide area flooding and wildfire. Heritage buildings also pose a potential risk, with many having unique features and important and irreplaceable artefacts. A significant number are also timber-framed and liable to a faster spread of fire.
- 7.2 In Droitwich Fire Station's area, the main risks relate to the River Salwarpe and it is noted that wildfire incidents tend to be less prevalent. Heritage issues are less likely to be a risk to life, but safeguarding the heritage environment (both built and natural) is an important part of the Service's role in helping to improve the safety of the community. Heritage issues are discussed further in Section 8 below.

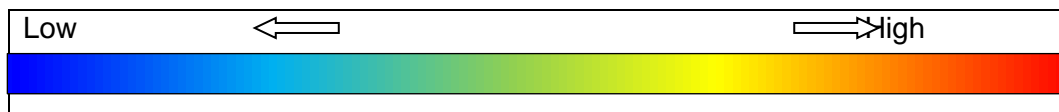
Water Incidents

- 7.3 Map 7 below shows the location of all water incidents involving life risk that have occurred within Droitwich Fire Station area over the last 12 years (2009/10 to 2020/21) at 100 m grid cell.

Map 7: Droitwich Fire Station area – Water-related life risk incidents 2009/10 to 2020/21



Key



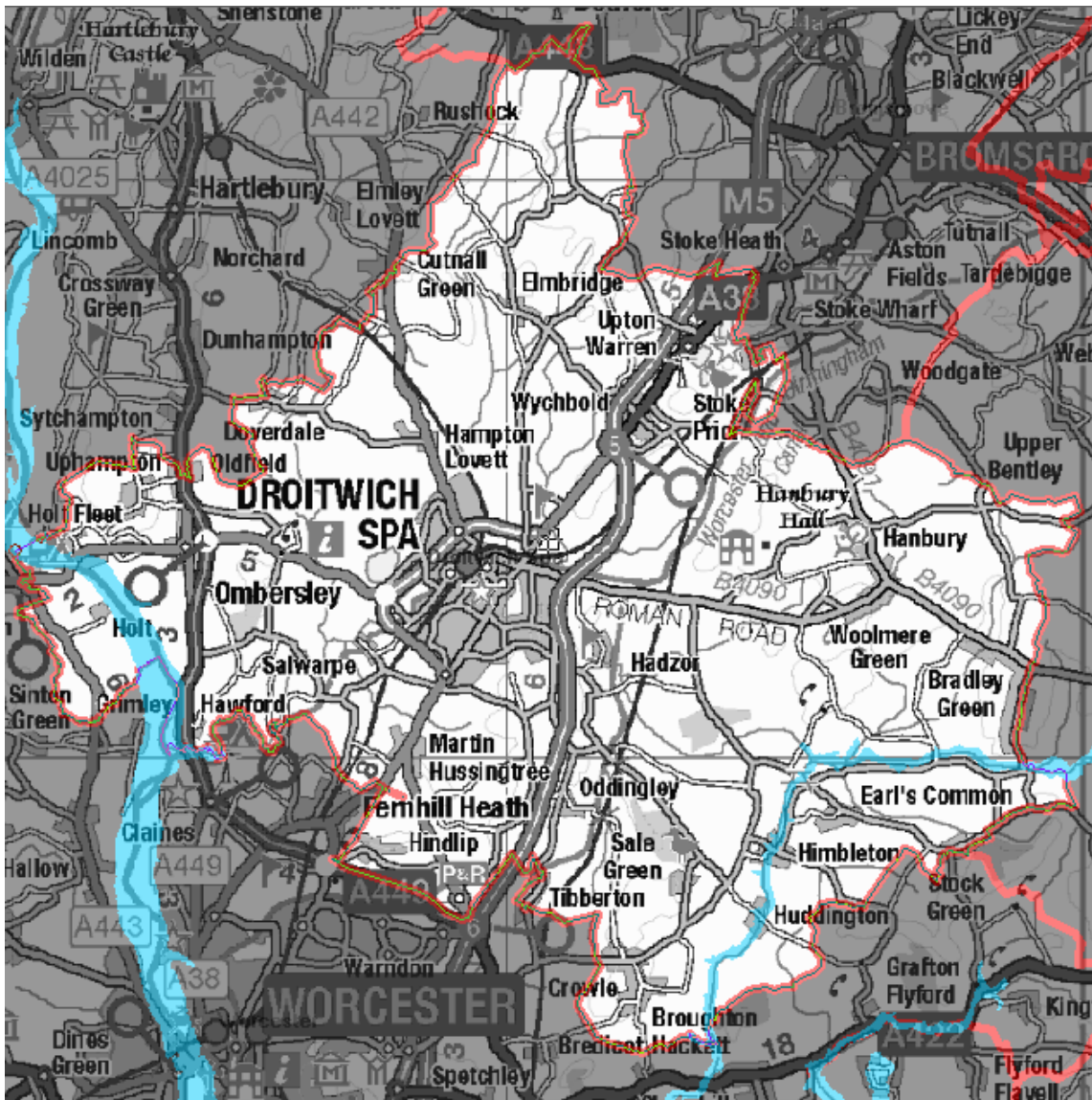
The main water sources within this area are the River Salwarpe, the Droitwich Junction Canal and the Birmingham to Worcester Canal.

- 7.4 Map 7 shows the hotspots of water rescues between 2009/10 and 2020/21, which highlights the River Salwarpe and a ford in the Himbleton area where multiple rescues have occurred.
- 7.5 As with the maps of Accidental Fires and RTCs, the maps of water rescues can be expanded to show incidents in more detail, which will assist Station Commanders in familiarising crews with areas of concern and in working with the Community Risk department and partner agencies to carry out preparatory and preventative work and raise awareness within the local community.
- 7.6 Other water-related incidents include rescues of people from flooded properties, lakes and quarries as well as animal rescues from water. These can also be mapped to assist Station Commanders and Community Risk officers in their partnership work with water safety agencies and landowners.

Flooding Areas

- 7.7 Maps prepared by the Environment Agency show areas that are likely to flood in the event of adverse weather conditions. Fire Station crews also have access to more detailed maps through their Mobile Data Terminals carried by every fire engine, as well as via the [Environment Agency website](#).
- 7.8 Map 8 below shows the area most likely to flood which are primarily along the course of the Rivers Salwarpe and Severn and their tributaries.

Map 8: Droitwich Fire Station area –Flooding areas identified by the Environment Agency



7.9 Information about areas likely to flood is used during flood planning with water safety partners and can be used as part of the Safe and Well Checks carried out with residents in these areas. This includes information on flood risk and advice on early evacuation in the event of flooding. Fire Station crews will also find more specific information about flood planning on the Service intranet.

8 Prevention and Protection Activities

8.1 All Fire Station crews and Community Risk officers have a key role to play in preventing incidents from happening and in protecting life and property in the event of emergency incidents. In helping to deliver the Community Risk Management Plan over the next few years, Droitwich Fire Station crews and the Community Risk department will be involved in a range of activities including the following:

a) NFCC Community Risk Calendar 2021

8.2 Each year the National Fire Chiefs Council prepares a calendar of events and campaigns to help promote community safety across the country. The Service uses this to help plan local events and campaigns throughout the year, in addition to more local community safety activities, and Fire Stations are fully involved in delivering this in their local areas. The 2021 Calendar can be found in Appendix 1 of this report.

b) Safe and Well Checks

8.3 These checks involve a visit to people's home to deliver fire safety advice and to install smoke alarms where needed. They help to identify other potential areas of concern, which may require additional input from partner agencies, in order to help people remain safe and well in their own homes. Having identified households and areas likely to be more vulnerable to Accidental Dwelling Fire as set out in Section 5 of this report, Station Commanders will be able to cross-reference the most at risk areas when working with the Community Risk department and community safety partners to introduce more targeted prevention activities.

c) Intel Process

8.4 Every Fire Station has identified a number of specific risks in their area, which are scheduled to be visited and reviewed on a regular basis. The specific risks for Droitwich Fire Station are listed on the Mobile Data Terminals and on the Service intranet at the following link: [Droitwich Fire Station Risk Premises](#). The Intel Process also enables crews to identify potential new risk properties and sites. In addition, each Fire Station presents their Top 5 Risks based on the specific risks to firefighters, the public, the environment, the local economy and heritage. These are reviewed by all firefighters at the Fire Station as part of their competency training.

d) Technical Fire Safety Inspections

8.5 These involve Technical Fire Safety officers conducting risk based audit and intelligence led audit programmes looking at the potential risks in commercial premises including occupancy and management procedures. This helps to ensure the premises meet fire safety regulations⁶.

⁶ The [Regulatory Reform \(Fire Safety\) Order 2005](#)

e) Business Fire Safety Checks

- 8.6 Commercial properties regarded as low risk are visited by the Wholetime crews at Fire Stations, which involves crews checking for basic fire safety requirements. Any areas of concern are highlighted to Technical Fire Safety officers for further investigation. Additional work is being undertaken by the Community Risk department to map commercial premises and their associated risks and once complete this will be made available to support Fire Stations in their work with local businesses.

f) Heritage sites

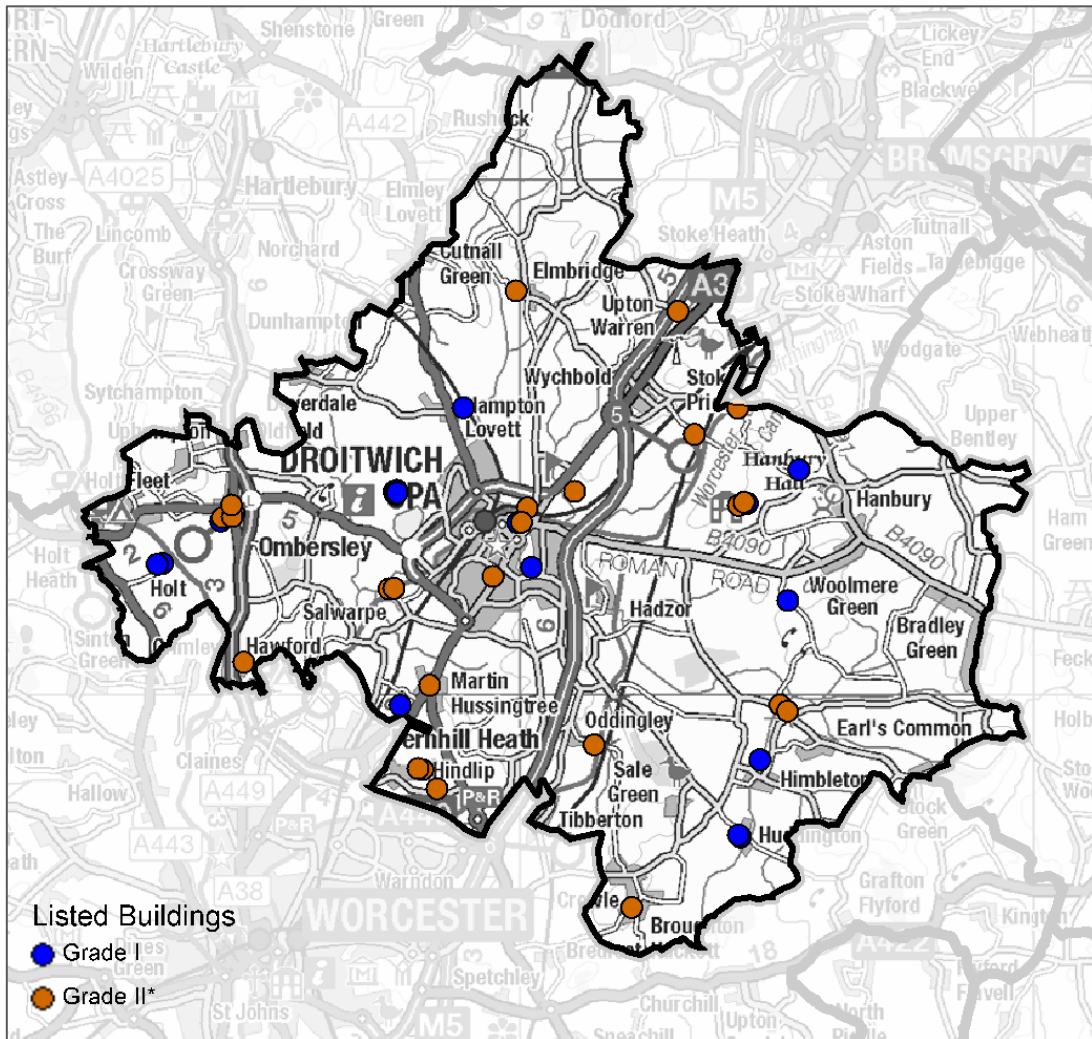
- 8.7 At March 2020, there were over 12,000 'listed' buildings and sites across Herefordshire and Worcestershire. 'Listing' is a process used to grade heritage importance and interest. Grade I and II* buildings and sites are of particular importance, of which there are currently 920 in the two counties. Droitwich Fire Station area contains 17 Grade I and 25 Grade II* buildings and sites. Detailed below in Section 9 is a map and list of all such buildings and sites in Droitwich Fire Station area. This will support Station Commanders in familiarising their crews with their locations, nature and value, and will help in planning emergency cover preventative and salvage arrangements.

9 Grade I and Grade II* Listed Buildings

9.1 Grade I buildings are considered to be of exceptional interest. Grade II* buildings are considered to be of particular importance of more than Special interest.

9.2 The location of Grade I and II* listed buildings are shown on Map 9 below.

Map 9: Droitwich Fire Station – Location of Grade I and Grade II* Listed Buildings



The tables on the following pages list each building by the Station area. The buildings and structures are drawn from English Heritage's Listed Buildings database⁷, updated to March 2020. More information can be gained from this website by entering the list entry number into the search facility.

⁷ [Listed Buildings Database](#)

Droitwich – Grade I Listed Buildings

List Entry Number	Grade	Building Name	Eastings	Northings
1350155	I	Church of St James	394287	257252
1081215	I	Huddington Court	394249	257295
1081205	I	Church of St Mary Magdalene	394663	258758
1301918	I	Mere Hall	395202	261847
1296639	I	Church of St Peter	390225	262496
1349337	I	Church of St Martin	382959	262556
1082922	I	Holt Castle	383061	262568
1167974	I	Church of St Andrew	389960	263364
1172877	I	Ombersley Court	384189	263389
1350164	I	Hanbury Hall	394418	263741
1173901	I	Heron's Tower about 35 yards South-East of Westwood	387581	263913
1350205	I	Nos 1 and 2 The Gatehouse about 50 yards East of Westwood	387621	263940
1173950	I	Westwood House	387560	263967
1296011	I	Falcon Tower about 35 yards North West of Westwood	387610	263989
1350133	I	Church of St Mary The Virgin	395425	264393
1215375	I	Church of St Mary	388904	265595
1350147	I	Church of St Michael and All Angels	387678	259817

Droitwich – Grade II* Listed Buildings

List Entry Number	Grade	Building Name	Eastings	Northings
1081275	II*	Church of St John The Baptist	392175	255889
1167748	II*	Cummins Farmhouse	388392	258191
1167757	II*	Hindlip Hall	388116	258565
1081190	II*	Church of St James	388024	258587
1081220	II*	Church of St James	391448	259050
1301732	II*	Shell Cottage	395200	259699
1081212	II*	Shell Manor	395056	259823
1168013	II*	Martin Hall Farmhouse	388251	260201
1081151	II*	Dovecote about 20 yards West of Hawford Grange	384637	260653
1081114	II*	Parish Church of St Michael	387462	262072
1350242	II*	Salwarpe Court	387558	262089
1415605	II*	Roman Catholic Church of The Sacred Heart and St Catherine of Alexandria	389483	262316
1296659	II*	Nos. 31-35 (odd) High Street, Droitwich	390028	263368
1081174	II*	Stable block about 100 yards North of Ombersley Court	384224	263458
1173507	II*	Sandys Mausoleum about 75 yards South-West	384419	263483
1173479	II*	Church of St Andrew	384442	263557
1095965	II*	Church of St Augustine	390150	263652
1350127	II*	The Orangery and adjoining walls about 120 yards West of Hanbury Hall	394244	263697
1350202	II*	The Dower House	384404	263705
1081234	II*	The Long Gallery about 30 yards North-West of Hanbury Hall	394358	263757
1288244	II*	Chateau Impney Hotel	391064	263969
1081254	II*	Old Astwood Farmhouse	393386	265079
1287929	II*	Church of St Michael	393067	267470
1215240	II*	Church of St Mary	389928	267866
1215148	II*	Astwood Farmhouse	394235	265590

Appendix 1

2021 NFCC Community Risk Calendar

FIRE AND RESCUE 2021 CAMPAIGN CALENDAR

www.nationalfirechiefs.org.uk
www.firekills.campaign.gov.uk



	JAN	FEB	MAR	APR	MAY	JUNE	JULY	AUG	SEPT	OCT	NOV	DEC
Key	<ul style="list-style-type: none"> Monthly Themes: Smoke Alarm Purchasing, Smoke Alarm Testing, Escapes Routes, Outdoor Fire Safety, Cooking, Smoke Alarm Purchasing, Home Fire Safety, Smoke Alarm Testing Fire Kills: Stop Up (Red), Stop Down (Blue) NFCC Campaigns: Stop Up (Red), Stop Down (Blue) 											
SATURDAY	1	1	1	1	1	1	1	1	1	1	1	1
SUNDAY	2	2	2	2	2	2	2	2	2	2	2	2
MONDAY	3	3	3	3	3	3	3	3	3	3	3	3
TUESDAY	4	4	4	4	4	4	4	4	4	4	4	4
WEDNESDAY	5	5	5	5	5	5	5	5	5	5	5	5
THURSDAY	6	6	6	6	6	6	6	6	6	6	6	6
FRIDAY	7	7	7	7	7	7	7	7	7	7	7	7
SATURDAY	8	8	8	8	8	8	8	8	8	8	8	8
SUNDAY	9	9	9	9	9	9	9	9	9	9	9	9
MONDAY	10	10	10	10	10	10	10	10	10	10	10	10
TUESDAY	11	11	11	11	11	11	11	11	11	11	11	11
WEDNESDAY	12	12	12	12	12	12	12	12	12	12	12	12
THURSDAY	13	13	13	13	13	13	13	13	13	13	13	13
FRIDAY	14	14	14	14	14	14	14	14	14	14	14	14
SATURDAY	15	15	15	15	15	15	15	15	15	15	15	15
SUNDAY	16	16	16	16	16	16	16	16	16	16	16	16
MONDAY	17	17	17	17	17	17	17	17	17	17	17	17
TUESDAY	18	18	18	18	18	18	18	18	18	18	18	18
WEDNESDAY	19	19	19	19	19	19	19	19	19	19	19	19
THURSDAY	20	20	20	20	20	20	20	20	20	20	20	20
FRIDAY	21	21	21	21	21	21	21	21	21	21	21	21
SATURDAY	22	22	22	22	22	22	22	22	22	22	22	22
SUNDAY	23	23	23	23	23	23	23	23	23	23	23	23
MONDAY	24	24	24	24	24	24	24	24	24	24	24	24
TUESDAY	25	25	25	25	25	25	25	25	25	25	25	25
WEDNESDAY	26	26	26	26	26	26	26	26	26	26	26	26
THURSDAY	27	27	27	27	27	27	27	27	27	27	27	27
FRIDAY	28	28	28	28	28	28	28	28	28	28	28	28
SATURDAY	29	29	29	29	29	29	29	29	29	29	29	29
SUNDAY	30	30	30	30	30	30	30	30	30	30	30	30
SUNDAY	31	31	31	31	31	31	31	31	31	31	31	31

Published by the Home Office. © Crown Copyright 2020.