

# COMMUNITY RISK MANAGEMENT PLAN 2021-2025

## STATION RISK PROFILE 2021 EVESHAM

(Updated October 2021)



HEREFORD & WORCESTER  
**HWR**  
FIRE AND RESCUE SERVICE

Contents

<b>1</b>	<b>Introduction .....</b>	<b>3</b>
<b>2</b>	<b>Evesham Fire Station Overview .....</b>	<b>5</b>
<b>3</b>	<b>Incident Overview.....</b>	<b>7</b>
<b>4</b>	<b>Evesham Fire Station Incident Occurrence.....</b>	<b>13</b>
<b>5</b>	<b>Risk Areas In Relation To Accidental Dwelling Fires.....</b>	<b>15</b>
<b>6</b>	<b>Road Traffic Collision Incidents.....</b>	<b>22</b>
<b>7</b>	<b>Other Potential Life Risks.....</b>	<b>24</b>
<b>8</b>	<b>Prevention and Protection Activities .....</b>	<b>28</b>
<b>9</b>	<b>Grade I and Grade II* Listed Buildings in the Evesham Fire Station area .....</b>	<b>30</b>

*Foreword*

*The Station Risk Profiles provide local detail about fire and other risks in each of the Service's 25 fire station areas. They include information about each fire station and the types of incidents they attend, and highlight the main areas at risk of accidental dwelling fire and other life risk incidents. Each Profile provides supporting information for the Community Risk Management Plan (CRMP) 2021-2025. Where appropriate, figures used in the Profiles are rounded to the nearest 100.*

*The Station Risk Profiles should be read in conjunction with two other supporting documents: the CRMP Risk Review 2018, which provides a spatial analysis of life risk data across the two counties, and the CRMP Demographic Profile 2018, which provides information about the characteristics of the local population. All documents can be found on the Service website.*

## 1 Introduction

- 1.1 Station Risk Profiles are reviews of potential life risks in each of the Fire and Rescue Service's 25 fire station areas. They form part of the CRMP Risk Review, which looks at the major life risk incidents across the two counties – Accidental Dwelling Fires and Road Traffic Collisions.
- 1.2 The Station Risk Profiles use the information presented in the CRMP Risk Review 2018 to provide a focused overview of the risks within each station area. They include a review of the types of incidents attended, and provide maps highlighting areas likely to be at greater risk of Accidental Dwelling Fires (ADFs) and Road Traffic Collisions (RTCs). Other potential risks such as outdoor fires and water incidents are also included where appropriate. Finally, there is an overview of the range of prevention and protection activity to be carried out within the station area, including a list of relevant heritage sites.
- 1.3 Station Commanders, crews and the Community Risk department can use the information, in conjunction with the National Fire Chiefs Council Community Risk Calendar (Appendix 1) to inform their planning for prevention and protection work within the station area over a 12 month period.
- 1.4 There are a number of development plans for housing across the two counties up to 2030. Around 50,000 new homes are planned to be built up to 2031, a rate of about 4,500 per year. Most of the housing development is planned for sites within and around the larger urban areas, particularly the two cities of Worcester and Hereford and other main towns. It will be important to monitor the potential impact of this growth on our services, as population and vehicle numbers will continue to increase in these areas over this period. For example, there may be an increased need for more community safety and road safety activities in these areas, and with more traffic on the roads, there may be an impact on how quickly fire engines can reach incidents. Over the next few years, incident numbers and the types of incidents occurring in newly built areas will be monitored to help to assess any potential impact.

- 1.5 The current version of Station Risk Profile (dated October 2021) uses 12 years of incident data (2009/10-2020/21), following data quality control carried out between May 2019 and January 2020. The Fire Risk map has also been updated to include 2019/20 incident data, which is used to help identify those local neighbourhoods at potentially higher fire risk in the station area. This is also cross-referenced against the characteristics of households in station areas using Mosaic data<sup>1</sup>, which helps to identify those households at potentially higher fire risk.
- 1.6 Heat maps have also been prepared for RTCs and Water Rescues (where relevant) to highlight areas of potentially higher risk. The heat maps will be updated each year, where appropriate. A full update of the risk maps will also be prepared when new demographic data is available from the 2021 Census, and when updated Mosaic data becomes available.

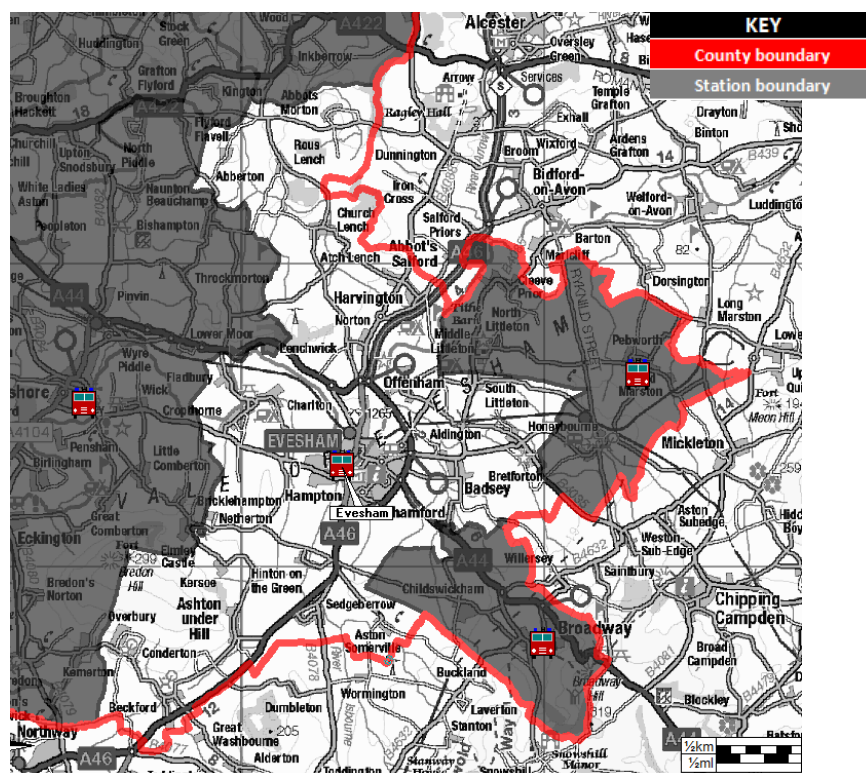
---

<sup>1</sup> Mosaic data provides a detailed and accurate understanding of each citizen's location, their demographics, lifestyles and behaviours.

## 2 Evesham Fire Station Overview

- 2.1 Evesham Fire Station is located at Abbey Road in Evesham just outside the town centre. The Fire Station covers an area of around 59 square miles, which houses 45,700 residents<sup>2</sup> living in 19,750 homes. The latest demographic data for Evesham estimates that 30 per cent residential housing has a head of the household aged over 66. 13 per cent of residential households have a single elderly resident<sup>3</sup>.
- 2.2 The Station has two fire engines (one Pump and one Heavy Rescue Pump), a Water Carrier for incidents where water supplies are poor and a Water Rescue Vehicle with a Boat for water incidents.
- 2.3 During 2020/21 there were 463 incidents within the Station ground, approximately 7 per cent of the Service's total activity. The Station also receives and provides operational support to and from neighbouring Fire Stations as well as to locations further afield if needed.
- 2.4 Map 1 shows a general overview of the Fire Station ground. The shape of the Station ground is based on areas nearest to the Station as determined by the Service's Fire Control.

**Map 1: Overview of Evesham Fire Station ground**



<sup>2</sup> Population data is a mid-2019 estimate which can be found on the nomis website.

<sup>3</sup> Household estimates are taken from data extracts provided by Experian's Mosaic Public Sector 2019 and demographic data from Experian's Mosaic Public Sector 2018.

## **Station Crewing Systems**

- 2.5 Within Hereford & Worcester Fire and Rescue Service, there are different ways of crewing the Fire Stations. This is determined by the level of risk associated with a Station area and the needs of the local community. The busiest Fire Stations are permanently crewed 24 hours a day (known as the Wholetime Duty System). The less busy Fire Stations are crewed by On-Call firefighters, who live or work locally and can respond to emergency calls quickly when they are needed (known as the Retained Duty System or RDS). The other duty system is called Wholetime Day Duty, where either the Fire Station or a Fire Engine is permanently crewed for 12 hours during the day and by On-Call firefighters at night.
- 2.6 The two fire engines at Evesham Fire Station are crewed by a combination of the Wholetime Day Duty System and the Retained Duty System. The first fire engine is immediately available during the day (between 07:00 and 19:00) seven days a week then at night an RDS crew responds from home. The second fire engine is RDS crewed and can usually respond within six minutes of the crew being alerted.

### 3 Incident Overview

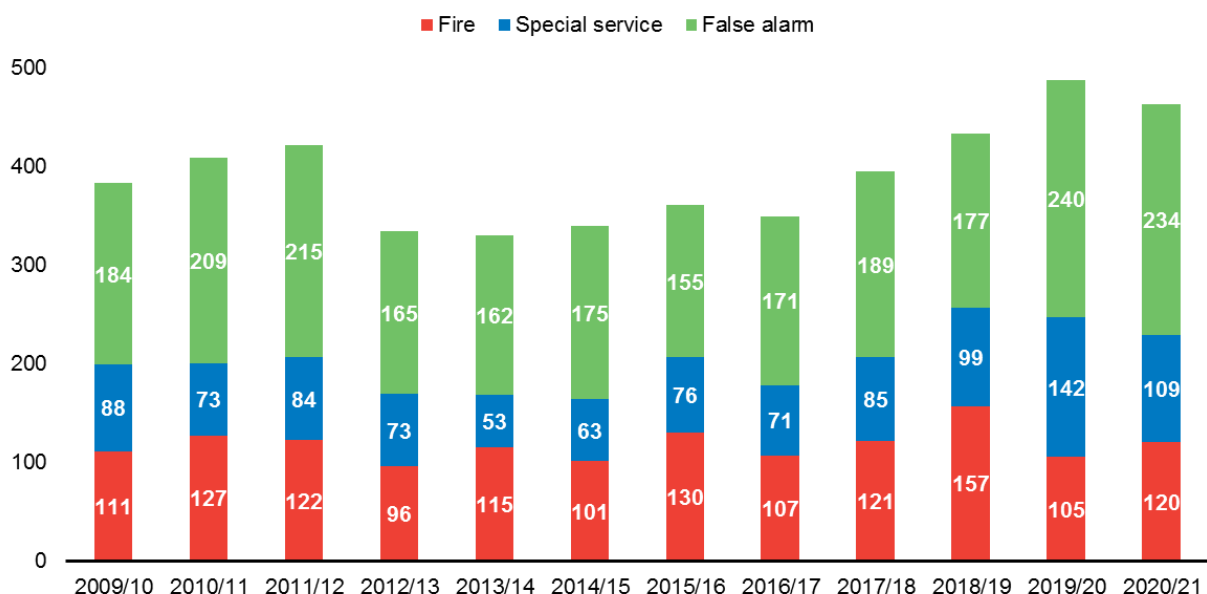
3.1 The Service attends a range of incidents that can be divided into three broad categories; Fires, Special Services and False Alarms. Each category has a range of incidents that pose different types and levels of risk to communities and to the firefighters who tackle them. The categories are shown below:

<ul style="list-style-type: none"> <li>• <b>Fires</b></li> </ul>	these include dwelling fires, other building fires, outdoor fires and car fires
<ul style="list-style-type: none"> <li>• <b>Special Services</b></li> </ul>	these incidents are those such as Road Traffic Collisions, flooding, person rescues, spills, leaks and animal rescues
<ul style="list-style-type: none"> <li>• <b>False Alarms</b></li> </ul>	these are when the Service responds to fire alarms or phone calls where there is no actual incident

3.2 Over the last 12 years (1 April 2009 to 31 March 2021), crews at Evesham Fire Station attended 4,704 incidents. Nearly half of these were false alarms (48.38 per cent), one in five was special service (21.60 per cent) and one in three was fire (30.02 per cent). Over the 12 years, there was a gradual rise in the number of special service and false alarm incidents recorded, with an overall increase of 20.89 per cent.

3.3 Graph 1 below provides further details.

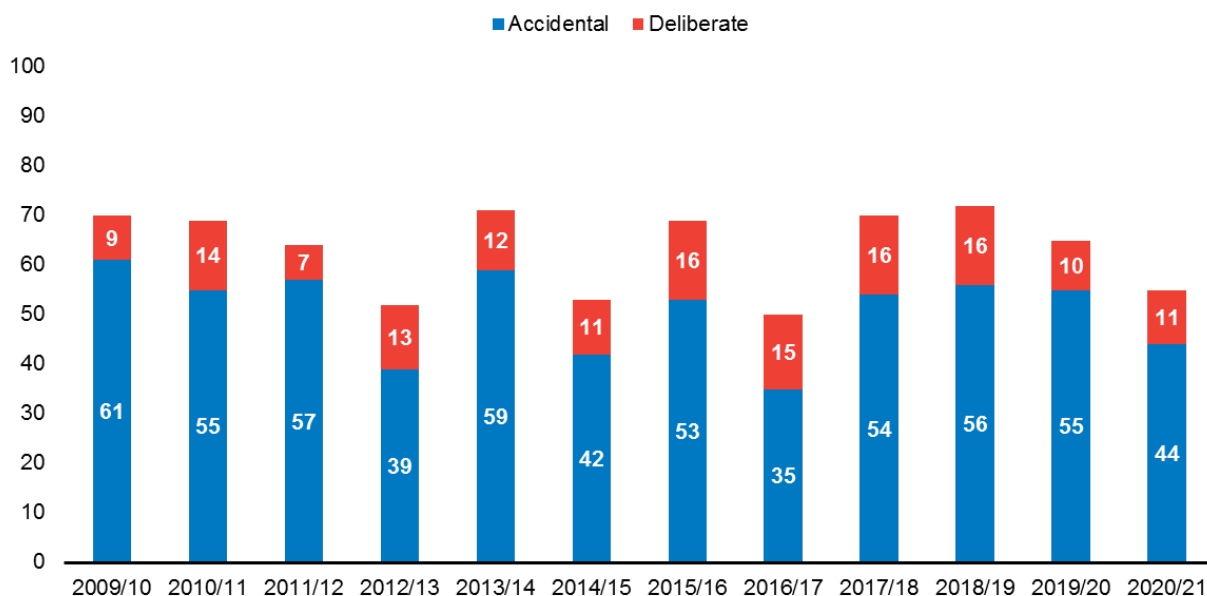
**Graph 1: Evesham Fire Station area – Incidents occurred 2009/10 to 2020/21**



## Fires

3.4 The Fires category is generally broken down into two main types; Primary Fires, which are mainly building fires and vehicle fires, and Secondary Fires, which are outdoor fires affecting areas such as grassland, woodland, crop fields and gardens. In Evesham Fire Station area the number of Primary Fires has seen a plateau. However, the number of Secondary Fires fluctuated over the last 12 years.

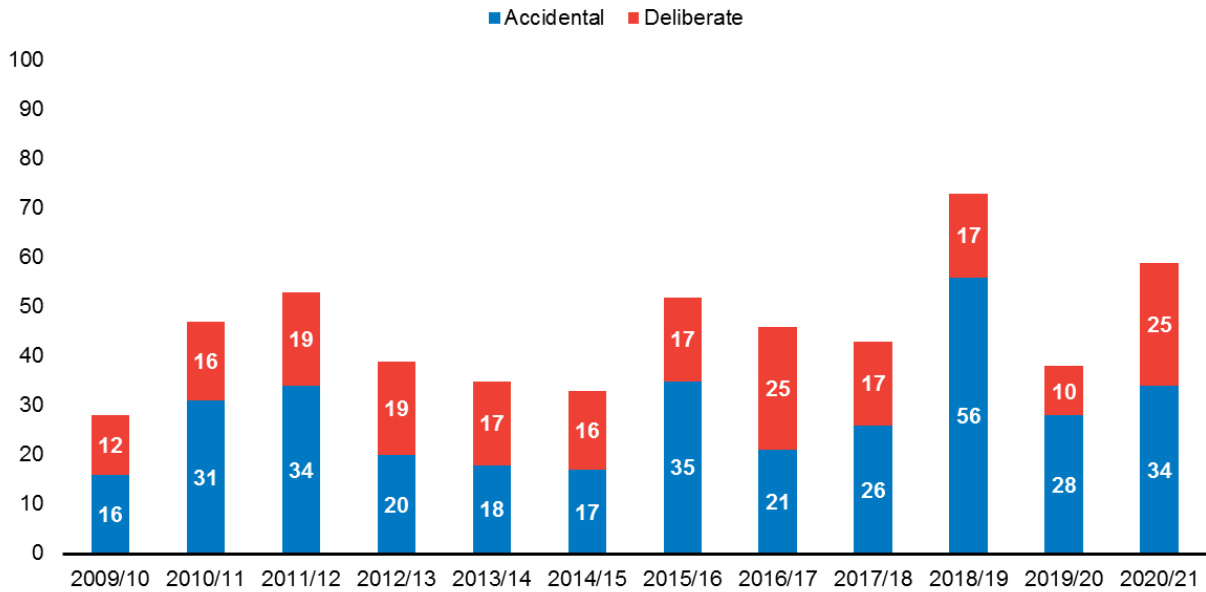
**Graph 2: Evesham Fire Station area – Primary Fires 2009/10 to 2020/21**



3.5 Graph 2 shows a breakdown of Primary Fires for Evesham Fire Station area over the last 12 years. It shows the vast majority of Primary Fires were caused accidentally and decreased by 27.87 per cent, whereas deliberate Primary Fires observed an increase by 22.22 per cent.



**Graph 3: Evesham Fire Station area - Secondary Fires 2009/10 to 2020/21**



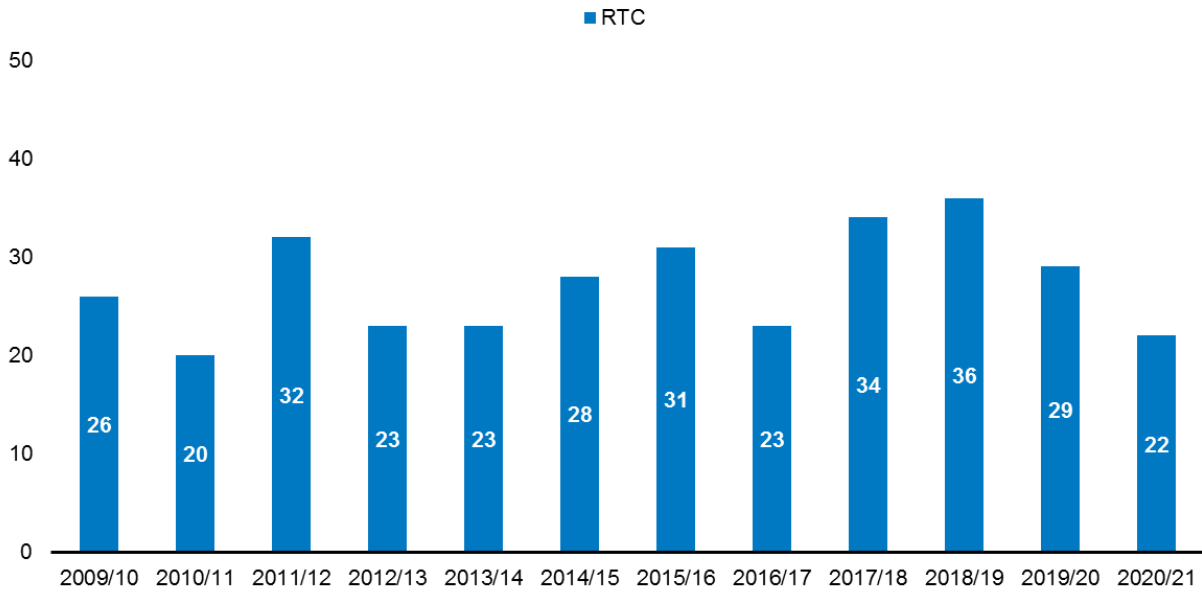
3.6 Graph 3 shows a breakdown of Secondary Fires in Evesham Fire Station area over the last 12 years. Secondary Fires mainly involve loose refuse (typically a bin fire) and grassland fires, especially during warm summer months. The graph shows that the numbers of accidental and deliberate Secondary Fires both fluctuated over the last 12 years and the cause of the majority of these fires was classed as being accidental.

3.7 Accidental Dwelling Fires are a particular risk to life for both householders and firefighters. These are discussed further in Section 5 later in this report.

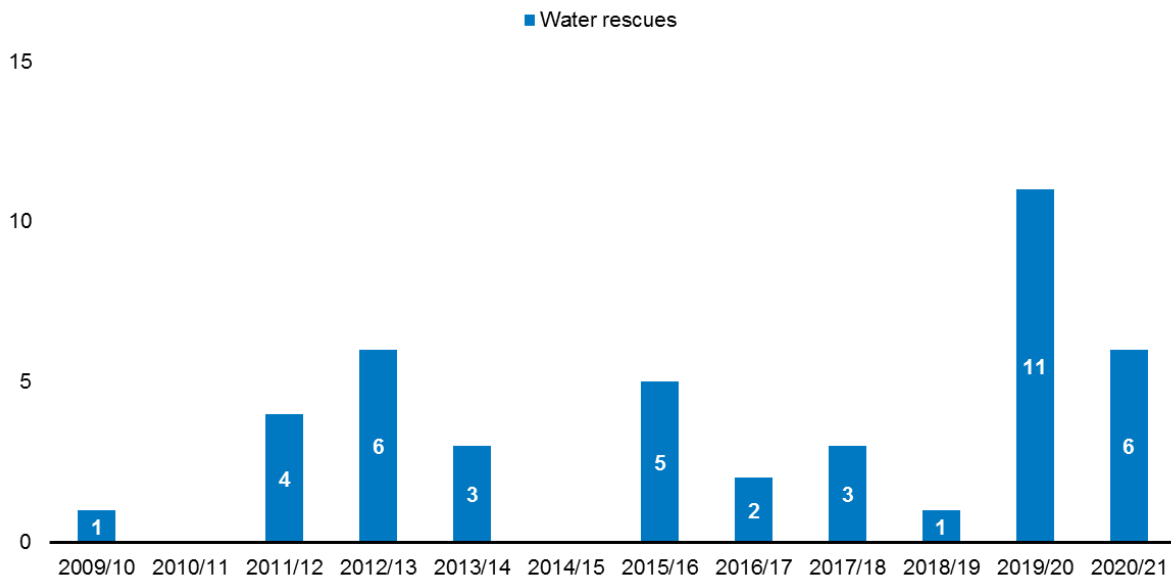
**Special Service Incidents**

3.8 In terms of Special Service incidents, the two main categories for Evesham Fire Station area involving potential risk to life are Road Traffic Collisions (RTCs) and Water Rescues. Over the last 12 years, the number of RTCs attended fluctuated and as shown in Graph 4 below the peak was recorded in 2018/19. Over the same period, the number of incidents involving rescues from water also varied with a spike in 2019/20 due two flooding events which occurred in November 2019 and February 2020. This is shown in Graph 5 below.

**Graph 4: Evesham Fire Station area – Road Traffic Collisions 2009/10 to 2020/21**



**Graph 5: Evesham Fire Station area – Water Rescues 2009/10 to 2020/21**



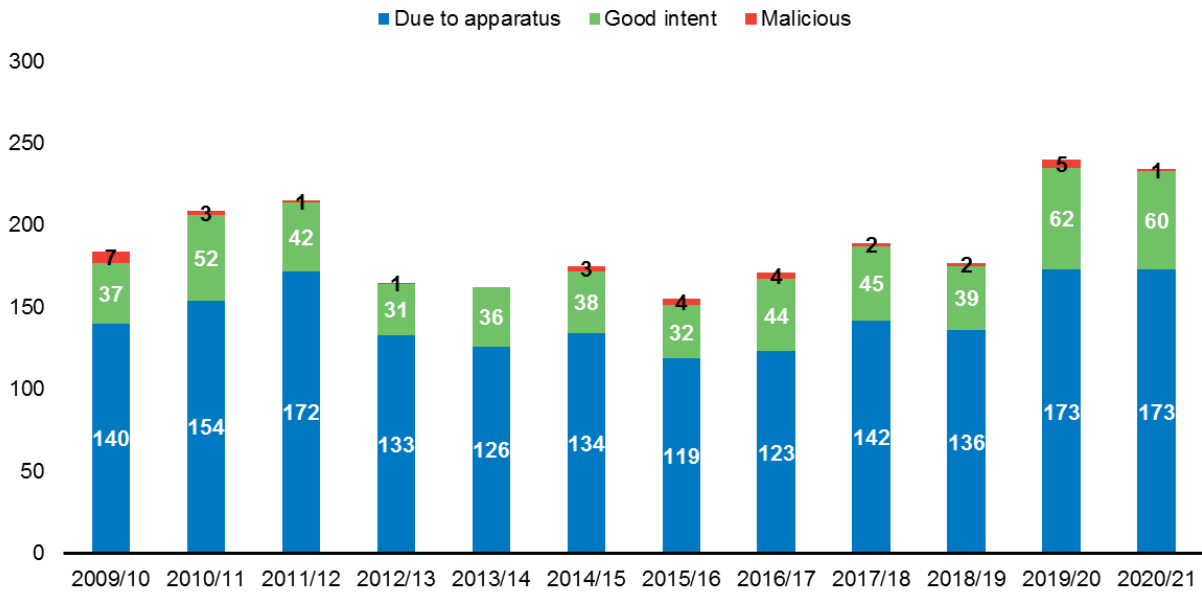
3.9 RTCs and Water Rescues are discussed further in Sections 6 and 7 respectively later in this report.

### **False Alarm Incidents**

3.10 False Alarm incidents are categorised into False Alarm Malicious, False Alarm Good Intent and False Alarm due to Apparatus. Over the last 12 years, the total number of False Alarms attended has increased by 27.17 per cent as shown in Graph 6 below.

The rise can be seen in both False Alarms due to Apparatus and Good Intent False Alarms.

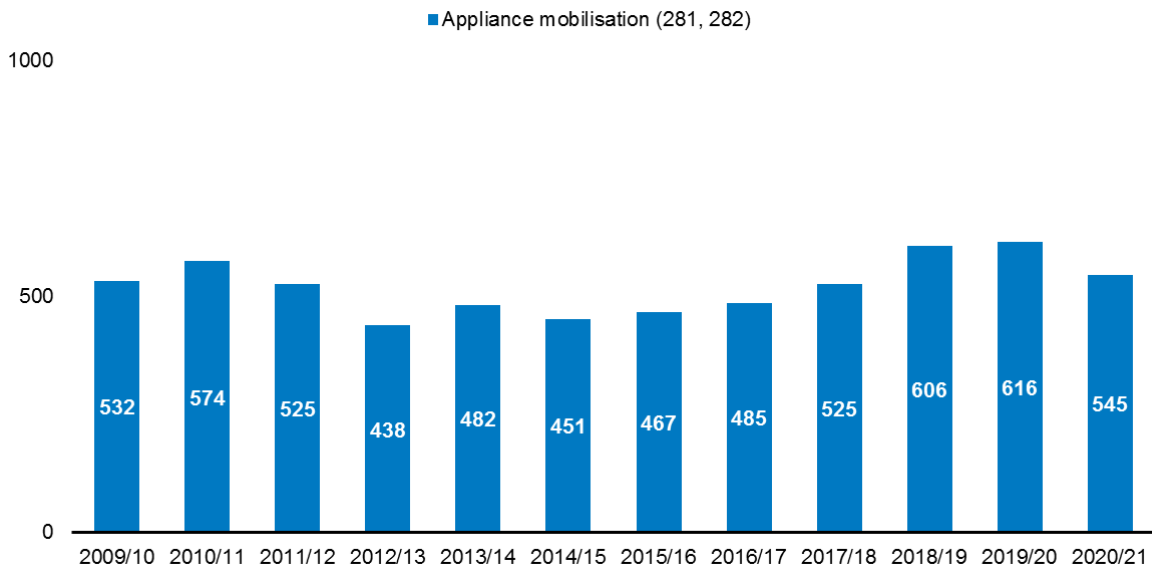
**Graph 6: Evesham Fire Station – False Alarms 2009/10 to 2020/21**



### **Appliance Mobilisation**

3.11 Although over the last 12 years (1 April 2009 to 31 March 2021) there were 4,704 incidents within Evesham station area, Evesham’s appliances have actually been mobilised 6,246 times. (This figure is a sum of the amount of times the stations appliances have attended an incident, for example, if two appliances from the same station attend one incident, this is counted as two).

**Graph 7: Evesham Fire Station Activity 2009/10 to 2020/21**



This has been broken down into the Service's area and 'over the border' mobilisations in table below.

**Table 1: Evesham's appliances mobilisations 2009/10 – 2020/21**

Mobilisation	2009 /10	2010/ 11	2011 /12	2012 /13	2013 /14	2014 /15	2015 /16	2016 /17	2017 /18	2018 /19	2019 /20	2020 /21
1st pump within station area	425	459	447	344	352	362	393	357	423	452	480	456
2nd pump within station area	3	5	5	5	8	1	10	4	5	9	6	4
1st pump in other station areas	60	53	43	44	49	36	32	47	52	77	71	59
2nd pump in other station areas	42	53	27	27	34	16	25	29	14	34	19	23
1st pump over the border	2	4	2	1	5	4	5	3	2	4	6	3
2nd pump over the border	0	0	1	0	1	0	1	0	1	0	0	0
NROB	-	-	-	9	19	13	1	11	4	3	9	
NOTR	-	-	-	8	14	19	0	34	24	27	25	
Total	532	574	525	438	482	451	467	485	525	606	616	545

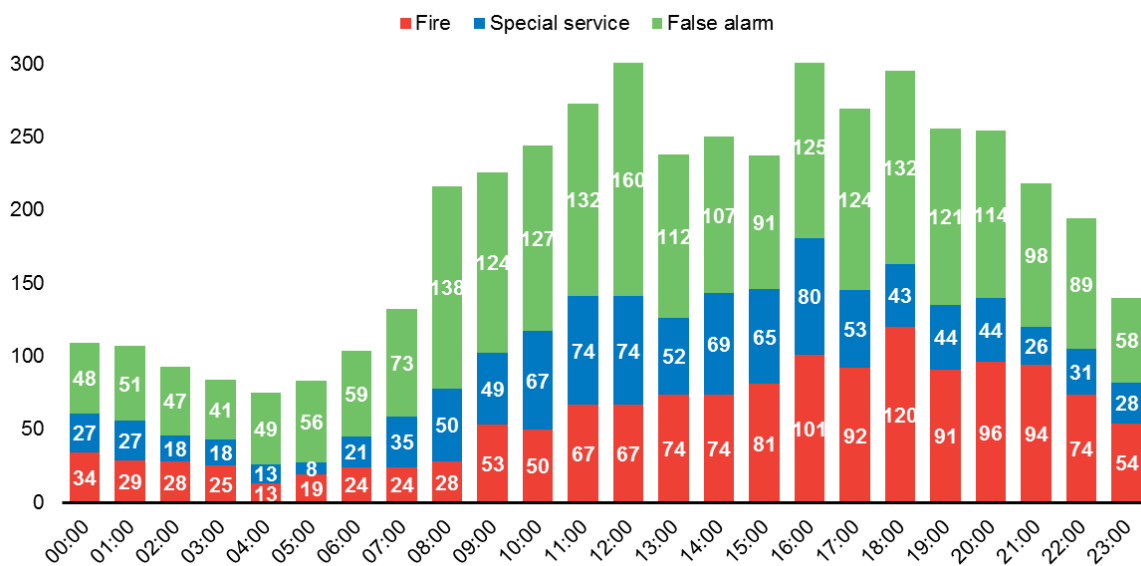
\* Mobilisation as second, third, ..., *n* pump

Out of 6,246 Evesham's appliances mobilisations, 5,015 were primarily located within Evesham station area (79.90 per cent), followed by Pershore's station ground with 6.90 per cent and Broadway with 4.21%.

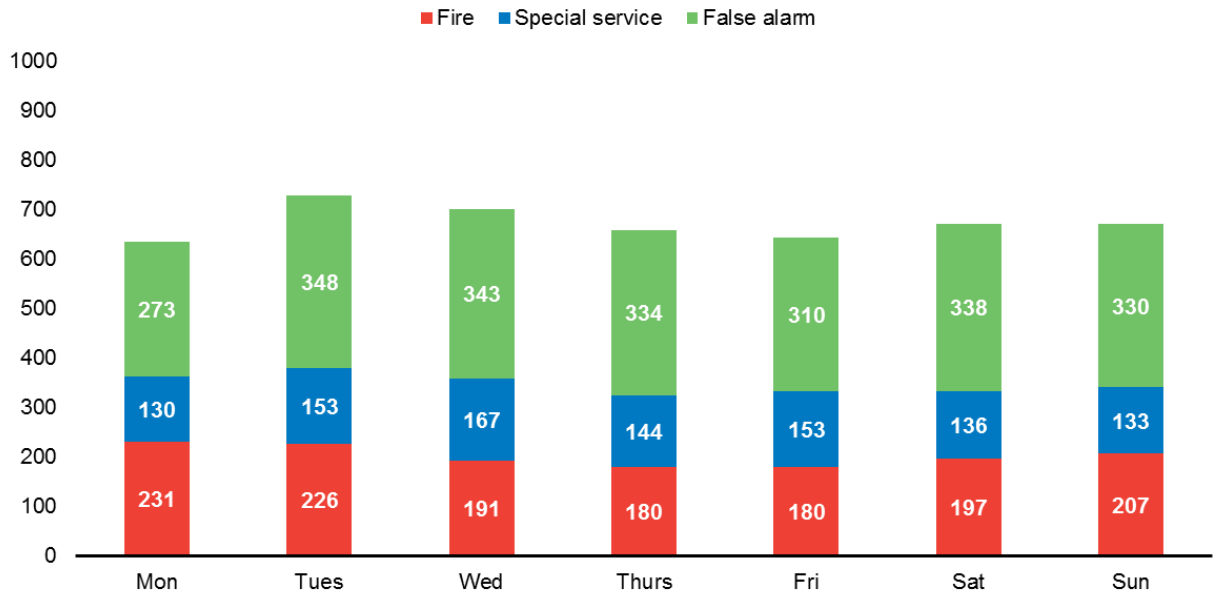
## 4 Evesham Fire Station Incident Occurrence

- 4.1 It is important for Station Commanders at the Service's Fire Stations to understand when incidents are more likely to happen, so that the right resources can be made available at the right time.
- 4.2 Using the last 12 years of incident data (2009/10 to 2020/21) for Evesham Fire Station area, incidents can be analysed in detail by time, day and month. This can help to identify particular trends, such as if most incidents are occurring during daylight hours which helps Station Commanders in ensuring enough resources are in place.
- 4.3 The following graphs show the specific hours, days of the week and months when incidents occurred in Evesham Fire Station's area. Station Commanders will be able to examine the information closely to help identify any trends in incident types or occurrences, so that they can plan to address them with appropriate actions.

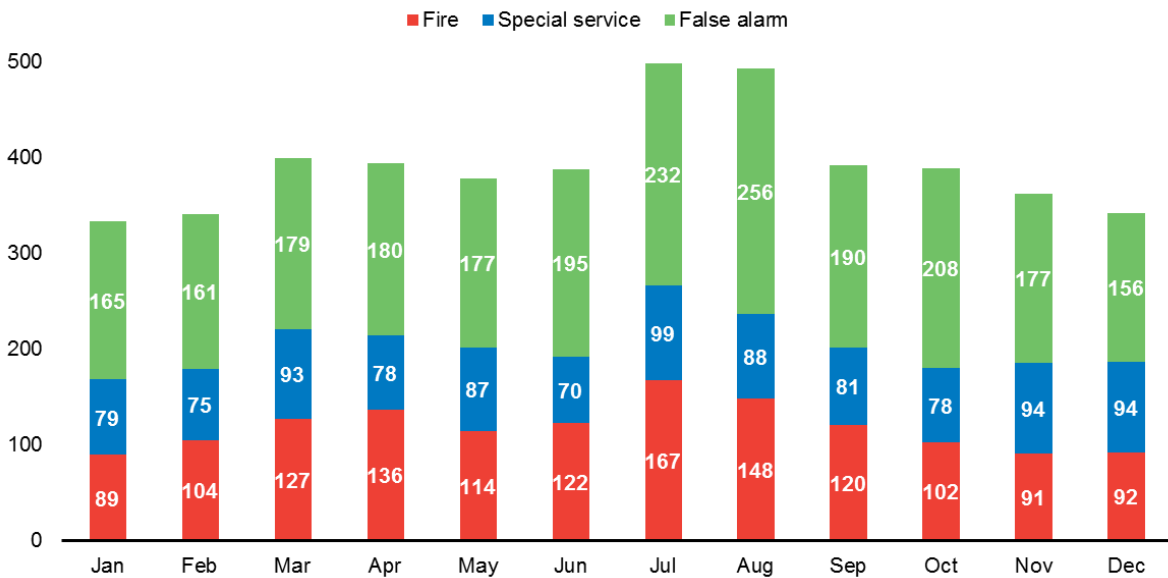
**Graph 8: Evesham Fire Station area - Hour of the Day Incidents Occurred 2009/10 to 2020/21**



**Graph 9: Evesham Fire Station area – Day of the Week Incidents Occurred 2009/10 to 2020/21**



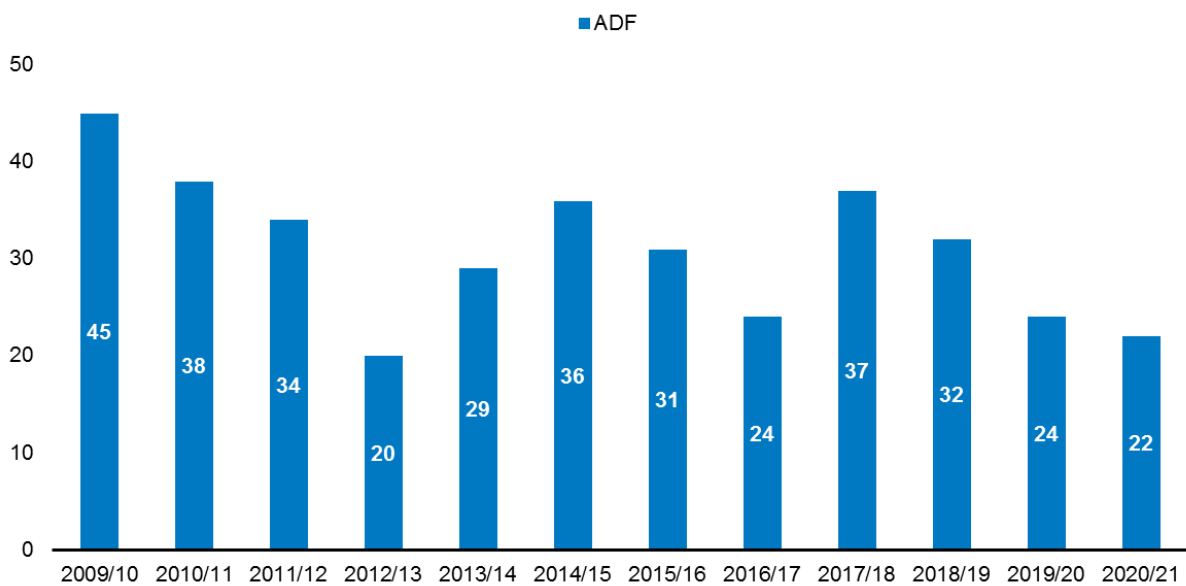
**Graph 10: Evesham Fire Station area – Month of Year Incidents Occurred 2009/10 to 2020/21**



## 5 Risk Areas In Relation To Accidental Dwelling Fires

5.1 This section looks specifically at Accidental Dwelling Fires and the potential risks within Evesham Fire Station area. While the number of Accidental Dwelling Fires is showing an overall downward trend, as shown in Graph 11 below, the latest figures show that there were just under two fires a month in Evesham Fire Station area. Accidental Dwelling Fires have the potential to pose the risk of serious injury or death for the occupants and also for the firefighters attending the incident.

**Graph 11: Evesham Fire Station area – Accidental Dwelling Fires 2009/10 to 2020/21**



5.2 Graph 11 shows that the number of Accidental Dwelling Fires, for Evesham Fire Station area over 12 years from 2009/10 to 2020/21 went down by 51.11 per cent. While there were 22 Accidental Dwelling Fires in 2020/21, this equates to just over one incident per 1,000 households<sup>4</sup>.

5.3 The CRMP Risk Review 2018 mapped the incidence of Accidental Dwelling Fires across the two counties and assigned risk ratings to highlight those areas that are at high, medium and low fire risk. This was worked out using a sophisticated Fire Risk Model, which is also used by Cumbria and Lancashire Fire and Rescue Services among others. Details of the calculations involved can be found in the CRMP Risk Review document.

---

<sup>4</sup> Household estimates are taken from data extracts provided by Experian's Mosaic Public Sector 2019 and demographic data from Experian's Mosaic Public Sector 2018.

5.4 The analysis for Evesham Fire Station area shows a number of areas that were considered to be at medium risk; there were no areas identified as high. This does not mean that living in a high risk area will lead to someone having an Accidental Dwelling Fire, but it does mean that high risk areas tend to have more fires than would normally be expected. The fire risk areas for 2017/18 to 2020/21 are mapped on **Error! Reference source not found.**, where the medium risk areas are shown in blue. Table 2 provides a list of those areas within Evesham Fire Station ground that have been considered to be at medium risk at some point during the last five years by the Fire Risk Model.

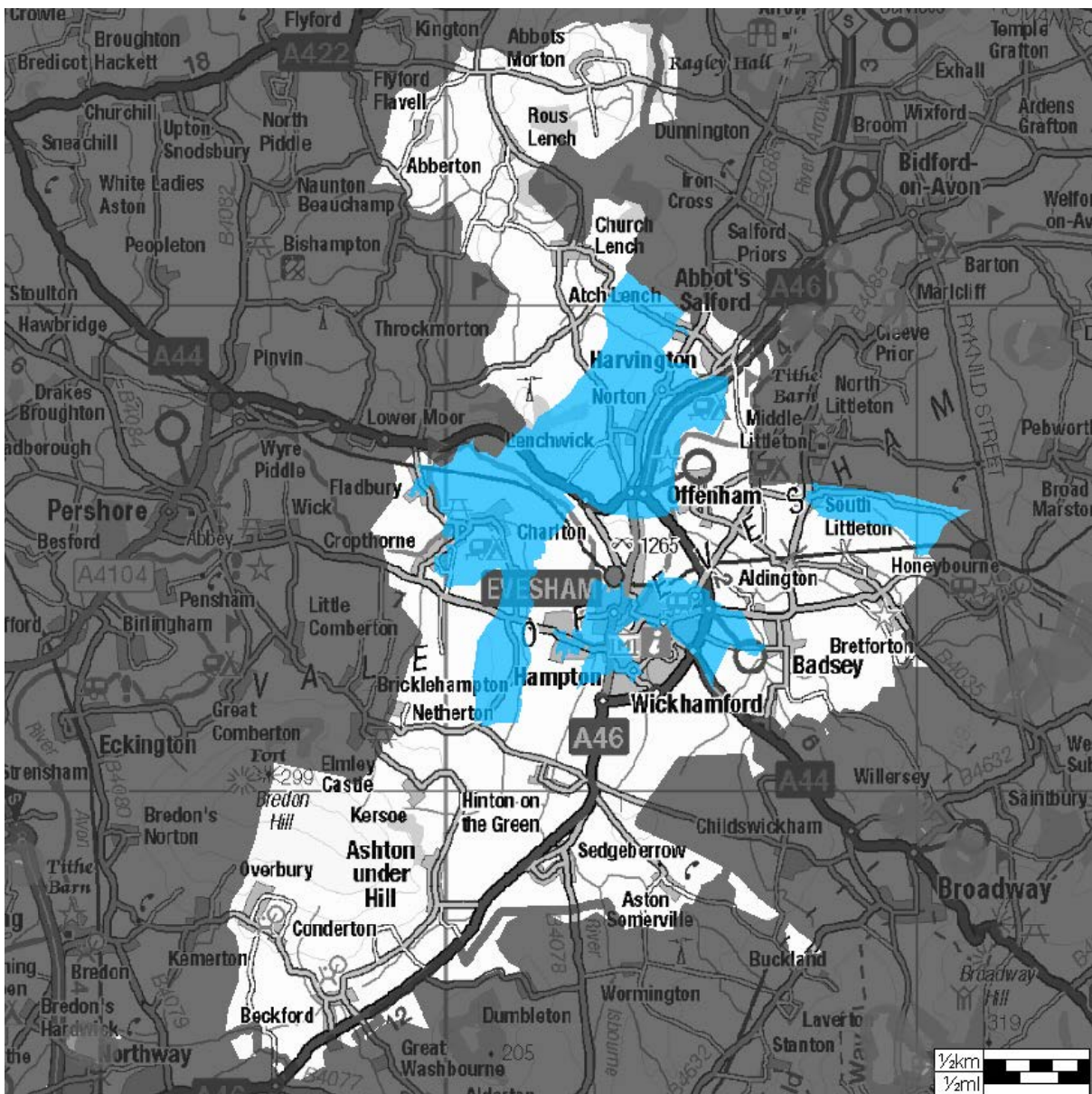
**Table 2: Areas most at risk of fire 2015/18 – 2017/20**

Local Authority	Ward	LSOA Name	Risk Level 2015/2018	Risk Level 2016/2019	Risk Level 2017/2020
Wychavon	Bengeworth	Green Gables	M	M	M
Wychavon	Bengeworth	Part of Abbey Park, Bridge Street	M	M	M
Wychavon	Evesham North	Bewdley Road	M	M	M
Wychavon	The Littletons	South Littleton	M	M	M
Wychavon	Harvington and Norton	Lenchwick & Norton Area	M	M	M
Wychavon	Little Hampton	Fairfield	L	M	M
Wychavon	Great Hampton	Peewit Road	L	M	M
Wychavon	Fladbury	Charlton	L	M	M
Wychavon	Elmley Castle and Somerville	Sedgeberrow	M	L	L
Wychavon	Bengeworth	Bengeworth	L	L	M



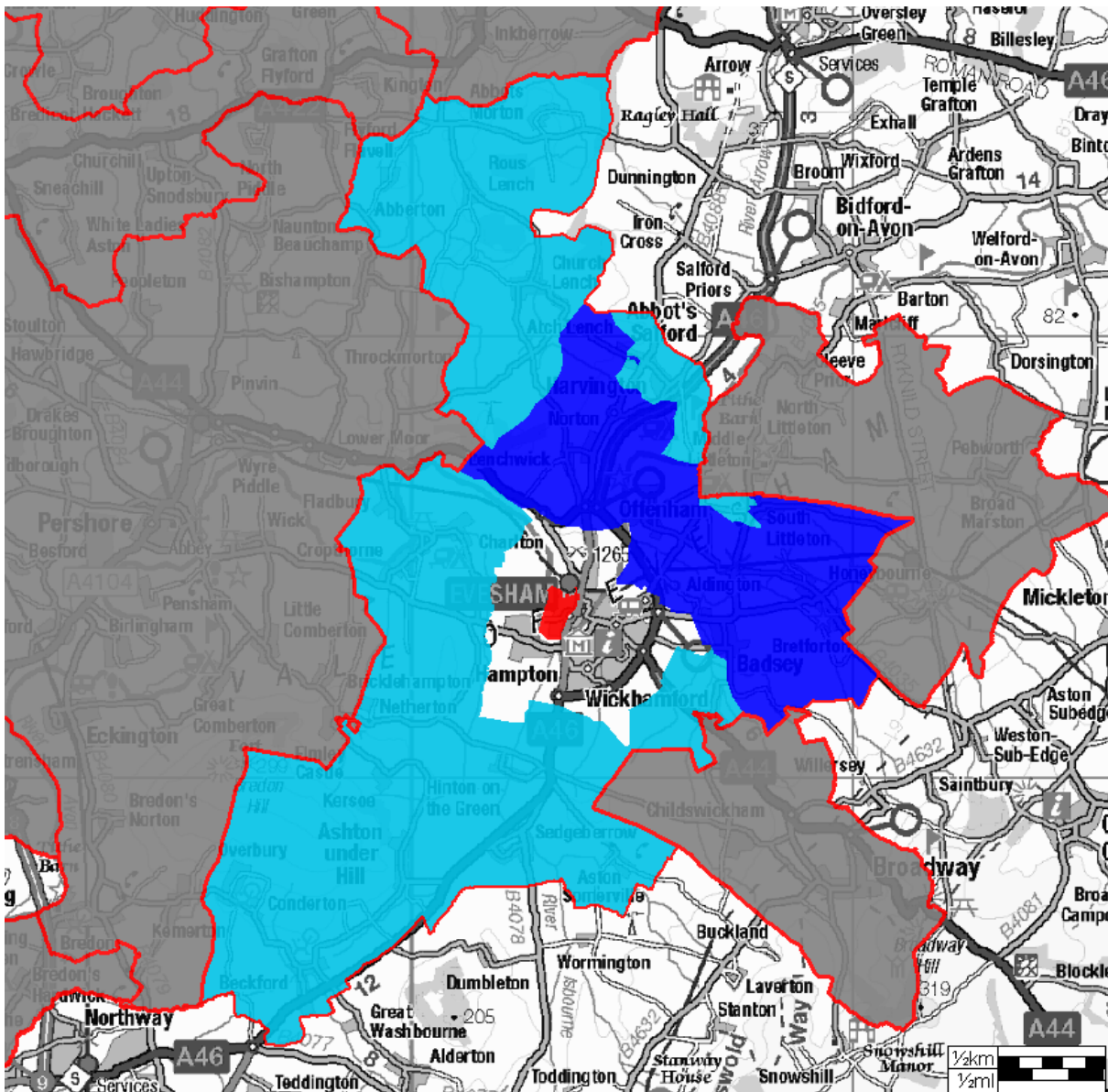
5.5 The local area of Bengeworth has increased from a low risk to a medium risk in recent years whilst the risk in Elmley Castle and Somerville has reduced. Table 2 has a list of all areas, the associated risk and the most common household characteristic. Community risk activity is recommended particularly in the medium risk areas and also in the other areas identified to prevent the fire risk from increasing further. More detailed information on individual households to increase the accuracy of targeting can be requested.

**Map 2: Evesham Fire Station area – Risk areas 2017/18 to 2019/20**



5.6 In addition to mapping areas at risk, the CRMP Risk Review also examined the characteristics of households that tend to have more Accidental Dwelling Fires than expected given the relative number of households in each group – that is, Groups A, C, G, J, M, N, and O. When examining these groups in detail, it can be seen that those households share characteristics of higher levels of dependency, disadvantage and vulnerability (Groups M, N and O), they are now being joined by households in the less populated rural areas (Groups A and G). Group C has not been mapped and further details on this can be found in the CRMP Risk Review, instead focus has been on six groups (A, G, J, M, N and O) and these are shown on Map 3.

**Map 3: At risk LSOA's by Mosaic Group 2017/18 to 2019/20**

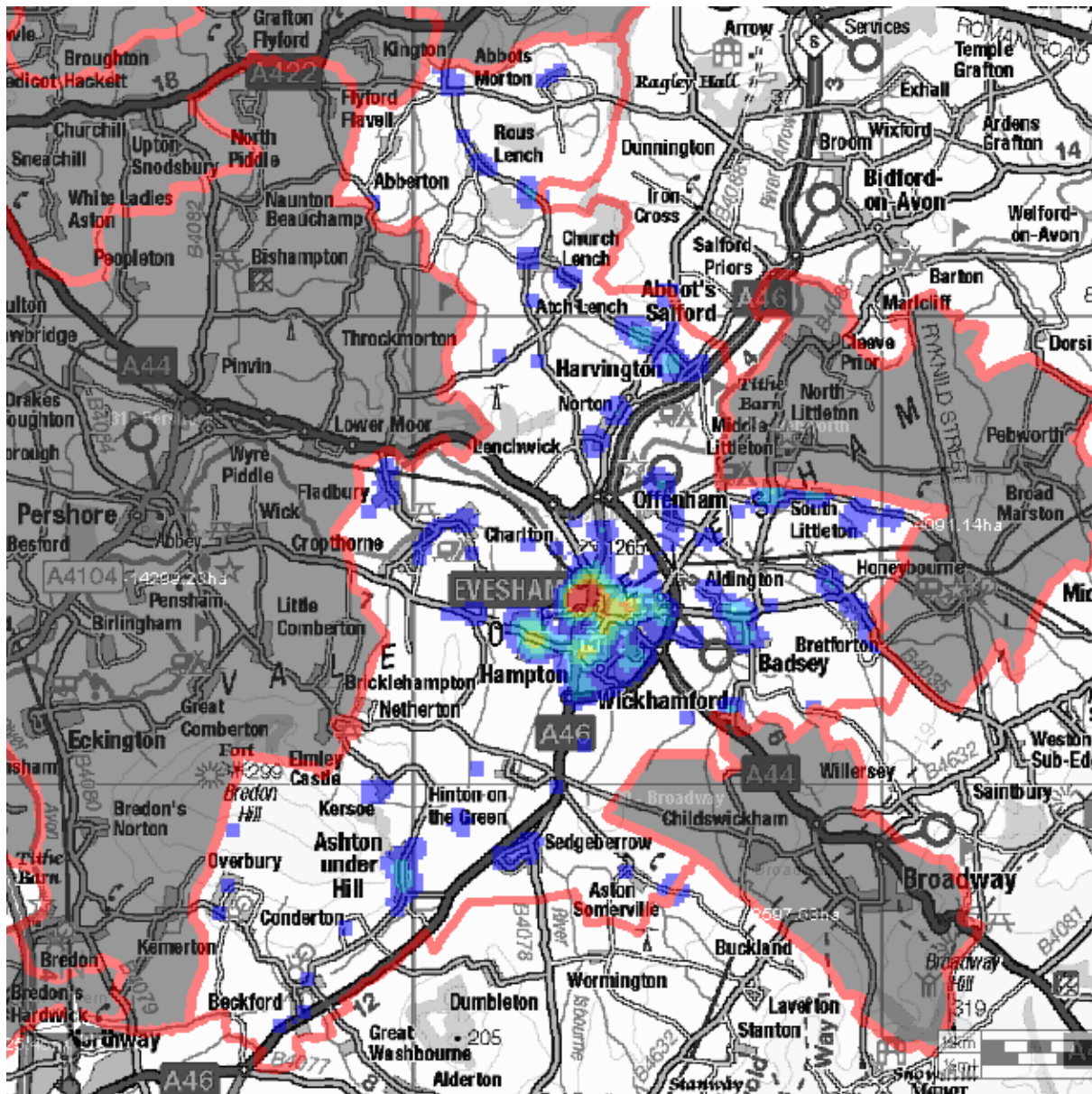


- A – Country Living
- G – Rural Reality
- J – Rental Hubs
- M – Family Basics
- N – Vintage Value
- O – Municipal Challenge

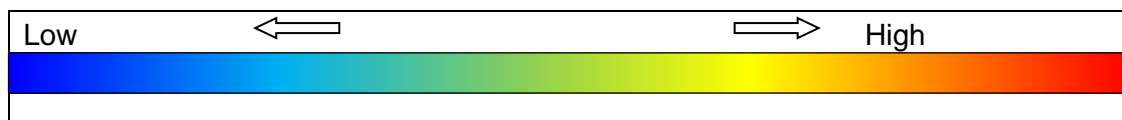
5.7 More information on these Mosaic group types can be found in the CRMP Fire Risk Review.



Map 4: Evesham Fire Station area – Accidental Dwelling Fires (2009/10 to 2020/21)

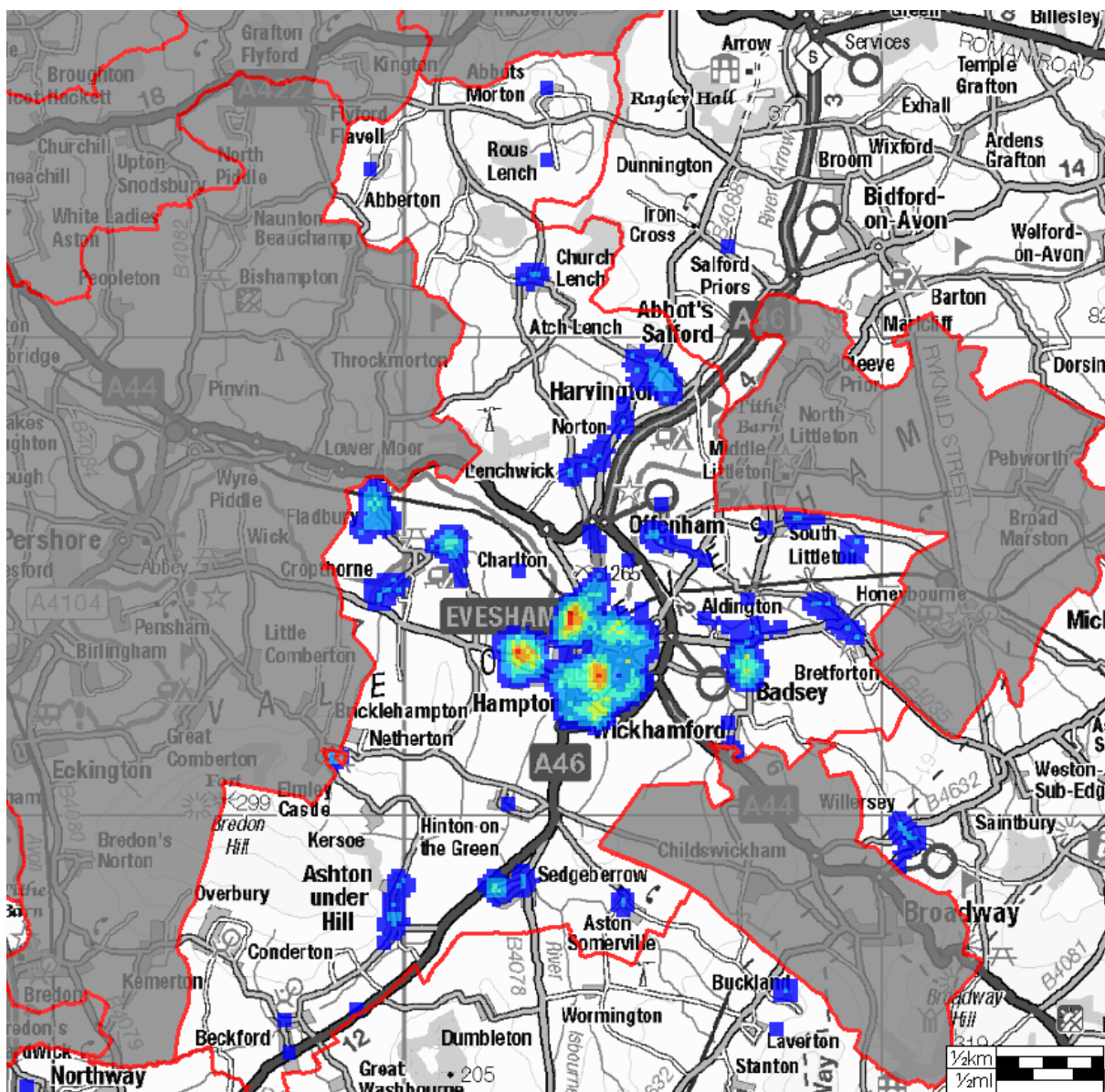


Key



- 5.8 Map 4 shows the concentration of Accidental Dwelling Fires in Evesham Station Ground area showing data between (2009/10 to 2020/21). This correlates with Map 5 which shows where the Community Risk department has been targeting Safe and Well Checks between 2017/18 to 2019/20.
- 5.9 Mapping Accidental Dwelling Fires and those households that tend to have more Accidental Fires than others provides Station Commanders and Community Risk officers with valuable information that will help to prioritise how they target their prevention and protection activities. When examining the local areas at potential risk, the maps can be expanded to show street level information about households and risks. Additional information about how to best contact those households at potential risk will also be available through the Community Risk department.

**Map 5: Community Risk Activity – Safe and Well Checks 2017/18 to 2019/20**

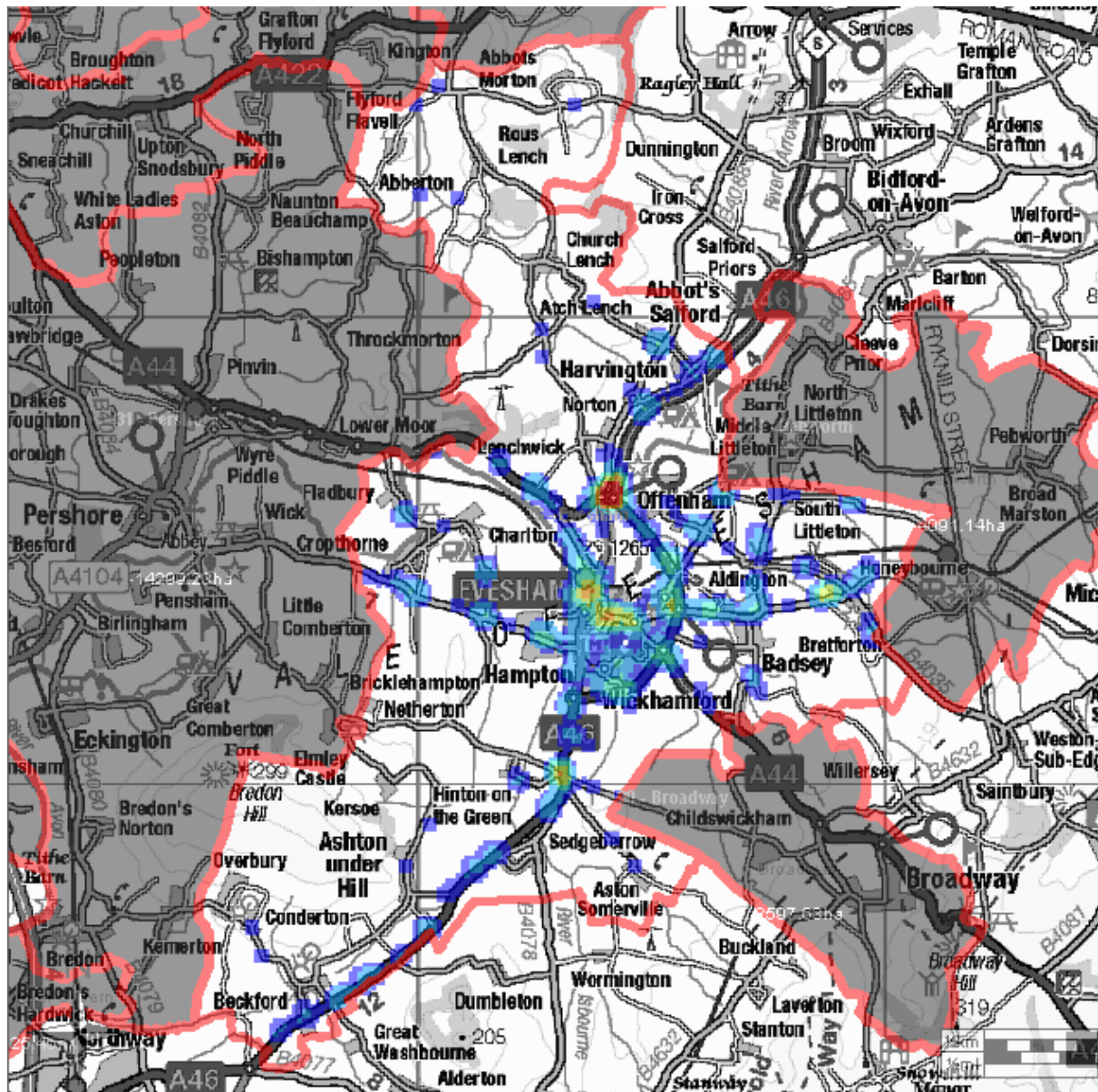




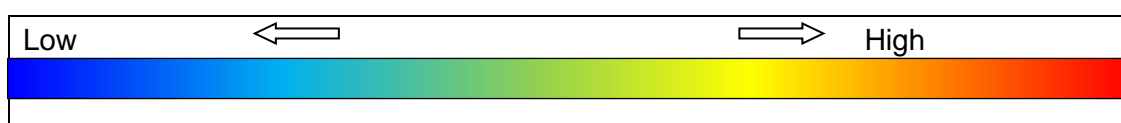
## 6 Road Traffic Collision Incidents

6.1 The CRMP Risk Review 2018 identified Evesham Fire Station area as a low risk area for Road Traffic Collisions (RTCs) in 2017/18 – 2019/20. This was determined using a risk model based on the number of RTC incidents attended and the severity of those incidents in terms of injury to persons. Map 6 below shows the location of all RTCs that occurred within Evesham Fire Station area over the last 12 years (2009/10 to 2020/21) at 100 m grid cell. The hotspots tend to be concentrated in Evesham town centre and major routes into and out of Evesham.

**Map 6: Evesham Fire Station area – RTC Hotspots 2009/10 to 2020/21**



Key



- 6.2 The map shows hotspots ranging from **high** (i.e. where RTCs occurred most frequently) graduating to **low** (i.e. where RTCs occurred least frequently). Where no colour is shown, this indicates that HWFRS did not attend any RTC incidents in the last 12 years.
- 6.3 The maps can be expanded to show individual roads and the location and type of each RTC incident attended. This will provide Station Commanders and Community Risk officers with important data when working with local authority and road safety partners.

## **7 Other Potential Life Risks**

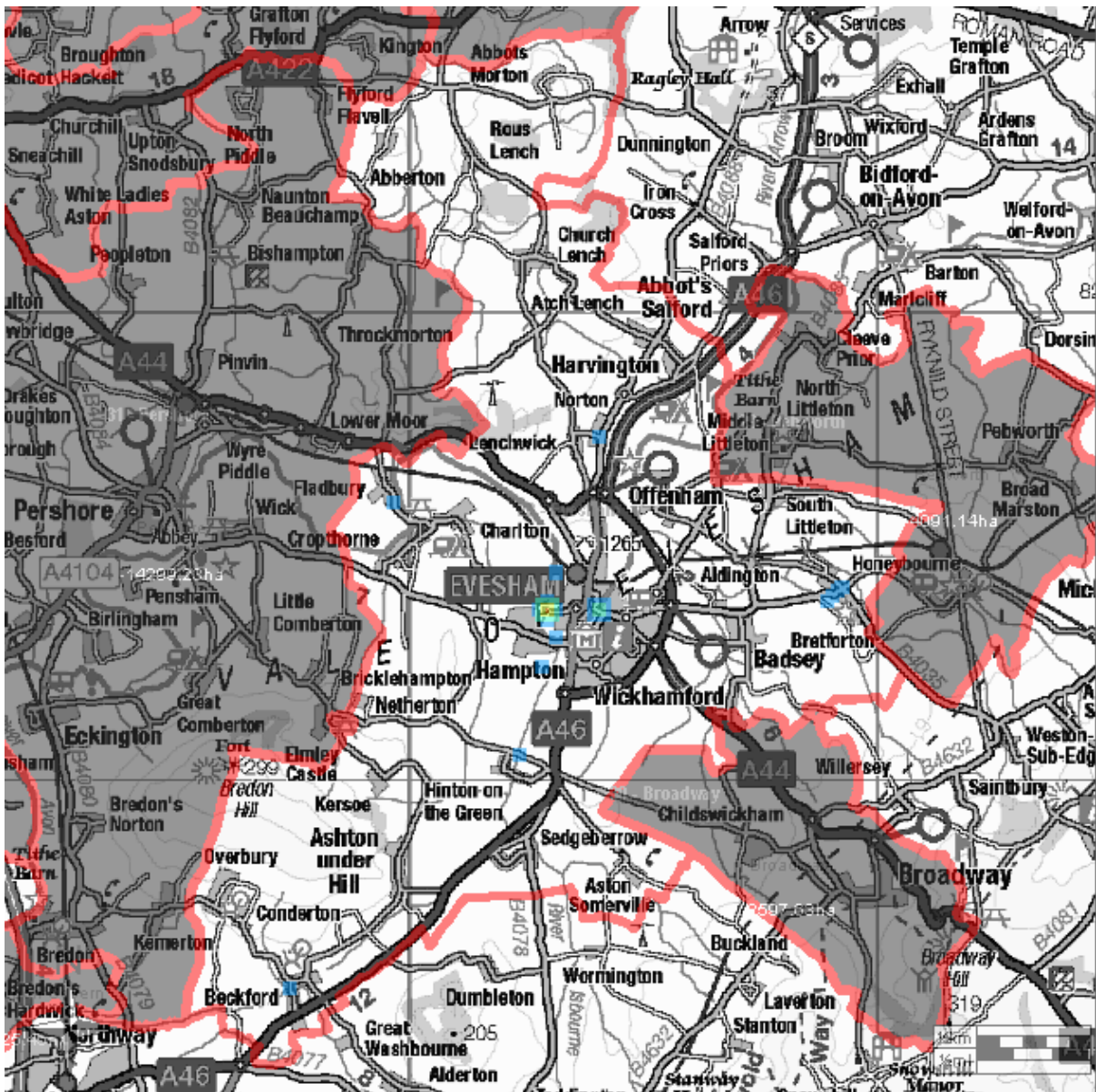
- 7.1 In addition to Accidental Dwelling Fires and Road Traffic Collisions, the Service attends a number of other incidents which have the potential to harm life and property. Among such incidents are water rescues and weather-related issues such as wide area flooding and wildfire. Heritage buildings also pose a potential risk, with many having unique features and important and irreplaceable artefacts. A significant number are also timber-framed and liable to a faster spread of fire.
- 7.2 In Evesham Fire Station area, the main risks relate to the River Avon and the potential for flooding during adverse weather, while wildfire tends to be less prevalent. Heritage issues are less likely to be a risk to life, but safeguarding the heritage environment (both built and natural) is an important part of the Service's role in helping to improve the safety of the community. Heritage issues are discussed further in Section 8 below.

### **Water Incidents**

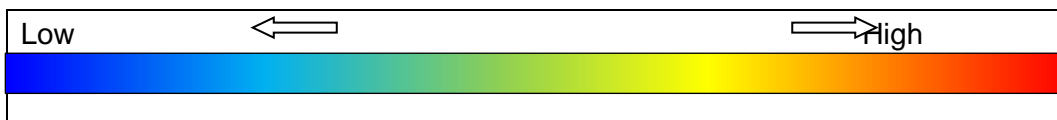
- 7.3 Map 7 below shows the location of all water incidents involving life risk that have occurred within Evesham Fire Station area over the last 11 years (2009/10 to 2020/21) at 100 m grid cell.



Map 7: Evesham Fire Station area – Water-related life risk incidents 2009/10 to 2020/21



Key



The major water source within this area is the River Avon and the majority of water rescues have been in and around the area where the River Avon passes through the town centre.

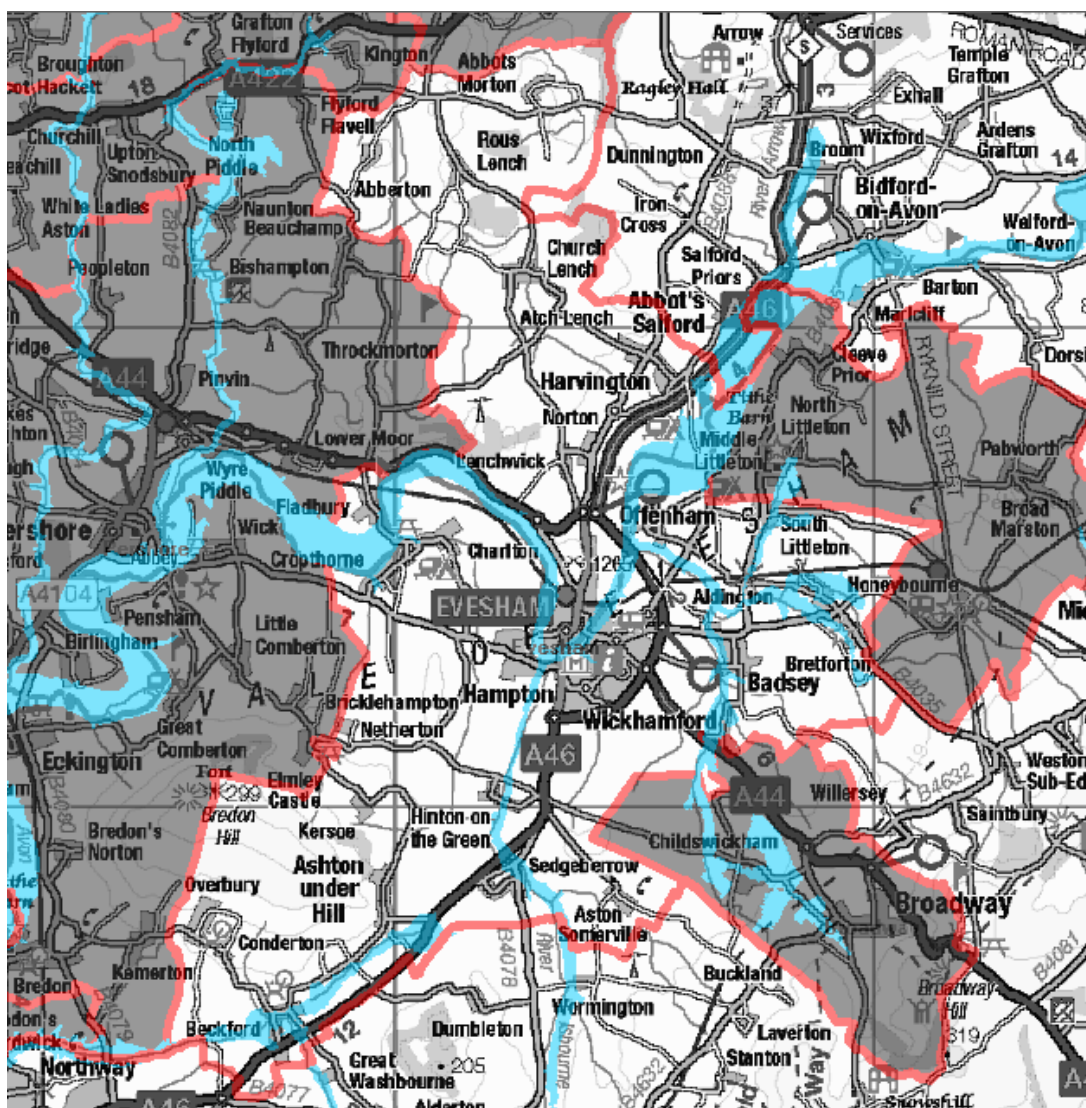
- 7.4 Map 7 shows the hotspots of water rescues between 2009/10 and 2020/21, which highlights the River Avon in Evesham as the area where these incidents tend to be concentrated.
- 7.5 As with the maps of Accidental Dwelling Fires and RTCs, the maps of water rescues can be expanded to show incidents in more detail, which will assist Station Commanders in familiarising crews with areas of concern and in working with the Community Risk department and partner agencies to carry out preparatory and preventative work and raise awareness within the local community.
- 7.6 Other water-related incidents include rescues of people from flooded properties, fords, lakes and quarries as well as animal rescues from water. These can also be mapped to assist Station Commanders and Community Risk officers in their partnership work with water safety agencies and landowners.

### **Flooding Areas**

- 7.7 Maps prepared by the Environment Agency show areas that are likely to flood in the event of adverse weather conditions. Fire Station crews also have access to more detailed maps through their Mobile Data Terminals carried by every fire engine, as well as via the [Environment Agency website](#).

7.8 Map 8 below shows the area most likely to flood, which is primarily along the course of the River Avon and its tributaries.

**Map 8: Evesham Fire Station area – Flooding areas identified by the Environment Agency**



7.9 Information about areas likely to flood is used during flood planning with water safety partners and can be used as part of the Safe and Well Checks carried out with residents in these areas. This includes information on flood risk and advice on early evacuation in the event of flooding. Fire Station crews will also find more specific information about flood planning on the Service intranet.

## 8 Prevention and Protection Activities

8.1 All Fire Station crews and Community Risk officers have a key role to play in preventing incidents from happening and in protecting life and property in the event of emergency incidents. In helping to deliver the Community Risk Management Plan over the next few years, Evesham Fire Station crews and the Community Risk department will be involved in a range of activities including the following:

a) NFCC Community Risk Calendar 2021

8.2 Each year the National Fire Chiefs Council prepares a calendar of events and campaigns to help promote community safety across the country. The Service uses this to help plan local events and campaigns throughout the year, in addition to more local community safety activities, and Fire Stations are fully involved in delivering this in their local areas. The 2021 Calendar can be found in Appendix 1 of this report.

b) Safe and Well Checks

8.3 These checks involve a visit to people's home to deliver fire safety advice and to install smoke alarms where needed. They help to identify other potential areas of concern, which may require additional input from partner agencies, in order to help people remain safe and well in their own homes. Having identified households and areas likely to be more vulnerable to Accidental Dwelling Fire as set out in Section 5 of this report, Station Commanders will be able to cross-reference the most at risk areas when working with the Community Risk department and community safety partners to introduce more targeted prevention activities.

c) Intel Process

8.4 Every Fire Station has identified a number of specific risks in their area, which are scheduled to be visited and reviewed on a regular basis. The specific risks for Evesham Fire Station are listed on the Mobile Data Terminals and on the Service intranet at the following link: [Evesham Fire Station Risk Premises](#). The Intel Process also enables crews to identify potential new risk properties and sites. In addition, each Fire Station presents their Top 5 Risks based on the specific risks to firefighters, the public, the environment, the local economy and heritage. These are reviewed by all firefighters at the Fire Station as part of their competency training.

d) Technical Fire Safety Inspections

8.5 These involve Technical Fire Safety officers conducting risk based audit and intelligence led audit programmes looking at the potential risks in commercial premises including occupancy and management procedures. This helps to ensure the premises meet fire safety regulations<sup>5</sup>.

e) Business Fire Safety Checks

8.6 Commercial properties regarded as low risk are visited by the Wholetime crews at Fire Stations, which involves crews checking for basic fire safety requirements. Any areas of concern are highlighted to Technical Fire Safety officers for further investigation. Additional work is being undertaken by the Community Risk department to map commercial premises and their associated risks and once complete this will be made available to support Fire Stations in their work with local businesses.

f) Heritage sites

8.7 At March 2020, there were over 12,000 'listed' buildings and sites across Herefordshire and Worcestershire. 'Listing' is a process used to grade heritage importance and interest. Grade I and II\* buildings and sites are of particular importance, of which there are currently 920 in the two counties. Evesham Fire Station area contains 17 Grade I and 35 Grade II\* buildings and sites. Section 9 provides a map and list of all such buildings and sites in Evesham Fire Station area. This will support Station Commanders in familiarising their crews with their locations, nature and value, and will help in planning emergency cover, preventative and salvage arrangements.

---

<sup>5</sup> The [Regulatory Reform \(Fire Safety\) Order 2005](#)



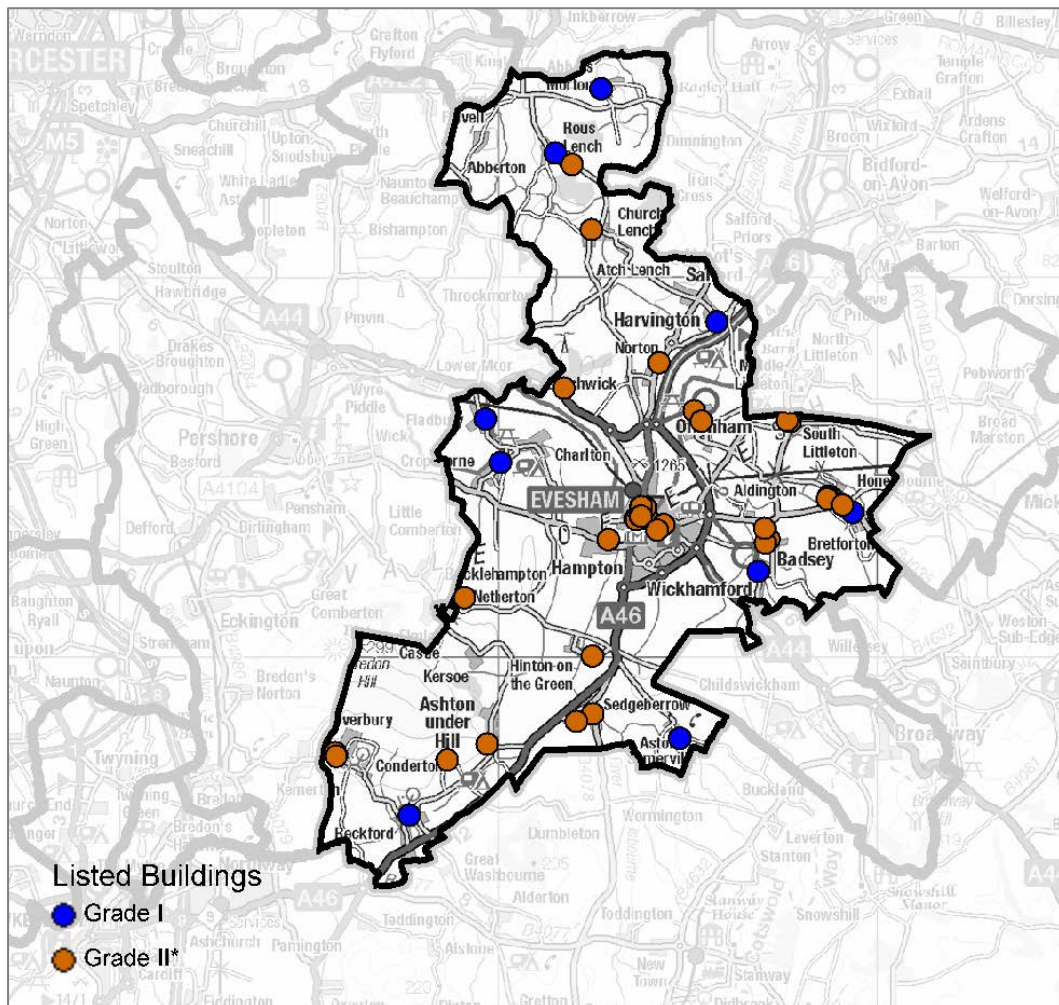
## 9 Grade I and Grade II\* Listed Buildings

Grade I buildings are considered to be of exceptional interest.

Grade II\* buildings are considered to be of particular importance of more than Special interest.

The location of Grade I and II\* listed buildings are shown on Map 9 below.

**Map 9: Evesham Fire Station – Location of Grade I and Grade II\* Listed Buildings**



The tables on the following pages list each building by the Station area. The buildings and structures are drawn from English Heritage's Listed Buildings database<sup>6</sup>, updated to March 2020. More information can be gained from this website by entering the list entry number into the search facility.

---

<sup>6</sup> [Listed Buildings Database](#)

## Evesham – Grade I Listed Buildings

List Entry Number	Grade	Building Name	Eastings	Northings
1167374	I	Church of St John The Baptist	397612	235841
1167601	I	Church of St Faith	395698	237423
1214230	I	Church of St Mary	404742	237869
1287774	I	Church of St John The Baptist	406808	242262
1156720	I	Numbers 53 and 54 incorporating remains of abbey gate (abbey Gate House)	403604	243647
1302722	I	The Almonry	403571	243648
1081353	I	The Bell Tower	403750	243663
1081359	I	Gate and railings of number 53	403601	243666
1081351	I	Church of All Saints	403732	243699
1081349	I	Abbot Reginald's gateway	403711	243721
1156077	I	Round House (National Westminster Bank)	403724	243791
1157784	I	Church of St Leonard	409301	243814
1116923	I	Church of St Michael	400016	245132
1039147	I	Church of St John The Baptist	399620	246276
1350000	I	Church of St James	405719	248828
1081652	I	Church of St Peter	401469	253286
1350229	I	Church of St Peter	402674	254973

Evesham – Grade II\* Listed Buildings

List Entry Number	Grade	Building Name	Eastings	Northings
1167342	II*	Norman Cottage	398621	237303
1349977	II*	Overbury and Conderton War Memorial Lych-gate	395692	237390
1167872	II*	Overbury Court	395665	237487
1081663	II*	Church of St Barbara	399671	237712
1168046	II*	Church House	402016	238310
1168041	II*	Church of St Mary	402454	238514
1215987	II*	Church of St Peter	402440	240036
1242825	II*	Ruined Chapel at Chapel Farm	399072	241569
1081602	II*	Badsey Hall	406995	243004
1156771	II*	Church of St Andrew	402862	243102
1081600	II*	Church of St James	407096	243114
1156245	II*	The Cottage	404144	243352
1157643	II*	The Manor House	406977	243397
1156214	II*	32 and 34 Church Street	404316	243490
1350068	II*	Remains of Abbey Stables	403594	243628
1081352	II*	Church of St Lawrence	403685	243675
1095953	II*	58 Bridge Street	403867	243697
1081350	II*	The Old Vicarage (Church House)	403722	243718
1081390	II*	Walker Hall	403706	243722
1302696	II*	Unitarian Chapel	403844	243946
1081376	II*	45-49 High Street	403721	243948
1081377	II*	Dresden House	403720	243963
1350076	II*	Railings and lamp standards of number 51	403729	243964
1081574	II*	41 Main Street	409036	244009
1081603	II*	Bretforton Grange	408630	244176
1081604	II*	Dovecote about 90 metres North-East of Bretforton	408716	244224
1301470	II*	Barn about 40 metres North of	408648	244227



List Entry Number	Grade	Building Name	Eastings	Northings
		Breforton Grange		
1081265	II*	The Manor House	407646	246209
1301324	II*	Church of St Mary and St Milburgh	405314	246221
1081303	II*	Church of St Michael	407572	246237
1166516	II*	Court Farmhouse	405120	246491
1111734	II*	Wood Norton Hall	401697	247089
1166454	II*	Church of St Egwin	404198	247759
1301843	II*	Church of All Saints	402414	251266
1081656	II*	Rous Lench Court	401905	252982

Appendix 1

2021 NFCC Community Risk Calendar

# FIRE AND RESCUE 2021 CAMPAIGN CALENDAR

www.nationalfirechiefs.org.uk  
www.firekills.campaign.gov.uk



Key: Fire Eds, NFCC Campaigns

	JAN	FEB	MAR	APR	MAY	JUNE	JULY	AUG	SEPT	OCT	NOV	DEC
	Monthly Themes Smoke Alarm Pushing	Cooking	Smoking	Smoking	Smoking	Smoking	Smoking	Smoking	Smoking	Smoking	Smoking	Smoking
	Smoking	Smoking	Smoking	Smoking	Smoking	Smoking	Smoking	Smoking	Smoking	Smoking	Smoking	Smoking
SATURDAY	1	1	1	1	1	1	1	1	1	1	1	1
SUNDAY	2	2	2	2	2	2	2	2	2	2	2	2
MONDAY	3	3	3	3	3	3	3	3	3	3	3	3
TUESDAY	4	4	4	4	4	4	4	4	4	4	4	4
WEDNESDAY	5	5	5	5	5	5	5	5	5	5	5	5
THURSDAY	6	6	6	6	6	6	6	6	6	6	6	6
FRIDAY	7	7	7	7	7	7	7	7	7	7	7	7
SATURDAY	8	8	8	8	8	8	8	8	8	8	8	8
SUNDAY	9	9	9	9	9	9	9	9	9	9	9	9
MONDAY	10	10	10	10	10	10	10	10	10	10	10	10
TUESDAY	11	11	11	11	11	11	11	11	11	11	11	11
WEDNESDAY	12	12	12	12	12	12	12	12	12	12	12	12
THURSDAY	13	13	13	13	13	13	13	13	13	13	13	13
FRIDAY	14	14	14	14	14	14	14	14	14	14	14	14
SATURDAY	15	15	15	15	15	15	15	15	15	15	15	15
SUNDAY	16	16	16	16	16	16	16	16	16	16	16	16
MONDAY	17	17	17	17	17	17	17	17	17	17	17	17
TUESDAY	18	18	18	18	18	18	18	18	18	18	18	18
WEDNESDAY	19	19	19	19	19	19	19	19	19	19	19	19
THURSDAY	20	20	20	20	20	20	20	20	20	20	20	20
FRIDAY	21	21	21	21	21	21	21	21	21	21	21	21
SATURDAY	22	22	22	22	22	22	22	22	22	22	22	22
SUNDAY	23	23	23	23	23	23	23	23	23	23	23	23
MONDAY	24	24	24	24	24	24	24	24	24	24	24	24
TUESDAY	25	25	25	25	25	25	25	25	25	25	25	25
WEDNESDAY	26	26	26	26	26	26	26	26	26	26	26	26
THURSDAY	27	27	27	27	27	27	27	27	27	27	27	27
FRIDAY	28	28	28	28	28	28	28	28	28	28	28	28
SATURDAY	29	29	29	29	29	29	29	29	29	29	29	29
SUNDAY	30	30	30	30	30	30	30	30	30	30	30	30
MONDAY	31	31	31	31	31	31	31	31	31	31	31	31
TUESDAY												
WEDNESDAY												
THURSDAY												
FRIDAY												
SATURDAY												
SUNDAY												

Fire Kills: Save Lives logo

NFCC National Fire Chiefs Council logo