

# COMMUNITY RISK MANAGEMENT PLAN 2021-2025

## STATION RISK PROFILE 2021 LEDBURY

(Updated October 2021)



HEREFORD & WORCESTER  
**HWFR**  
FIRE AND RESCUE SERVICE

Contents

<b>1</b>	<b>Introduction .....</b>	<b>3</b>
<b>2</b>	<b>Ledbury Fire Station Overview .....</b>	<b>4</b>
<b>3</b>	<b>Incident Overview.....</b>	<b>6</b>
<b>4</b>	<b>Ledbury Fire Station Incident Occurrence .....</b>	<b>12</b>
<b>5</b>	<b>Risk Areas In Relation To Accidental Dwelling Fires.....</b>	<b>14</b>
<b>6</b>	<b>Road Traffic Collision Incidents.....</b>	<b>20</b>
<b>7</b>	<b>Other Potential Life Risks.....</b>	<b>22</b>
<b>8</b>	<b>Prevention and Protection Activities .....</b>	<b>26</b>
<b>9</b>	<b>Grade I and Grade II* Listed Buildings .....</b>	<b>28</b>
	<b>Appendix 1 .....</b>	<b>32</b>

*Foreword*

*The Station Risk Profiles provide local detail about fire and other risks in each of the Service’s 25 fire station areas. They include information about each fire station and the types of incidents they attend, and highlight the main areas at risk of accidental dwelling fire and other life risk incidents. Each Profile provides supporting information for the Community Risk Management Plan (CRMP) 2021-2025. Where appropriate, figures used in the Profiles are rounded to the nearest 100.*

*The Station Risk Profiles should be read in conjunction with two other supporting documents: the CRMP Risk Review 2018, which provides a spatial analysis of life risk data across the two counties, and the CRMP Demographic Profile 2018, which provides information about the characteristics of the local population. All documents can be found on the Service website.*

## 1 Introduction

- 1.1 Station Risk Profiles are reviews of potential life risks in each of the Fire and Rescue Service's 25 fire station areas. They form part of the CRMP Risk Review, which looks at the major life risk incidents across the two counties – Accidental Dwelling Fires and Road Traffic Collisions.
- 1.2 The Station Risk Profiles use the information presented in the CRMP Risk Review 2018 to provide a focused overview of the risks within each station area. They include a review of the types of incidents attended, and provide maps highlighting areas likely to be at greater risk of Accidental Dwelling Fires (ADFs) and Road Traffic Collisions (RTCs). Other potential risks such as outdoor fires and water incidents are also included where appropriate. Finally, there is an overview of the range of prevention and protection activity to be carried out within the station area, including a list of relevant heritage sites.
- 1.3 Station Commanders, crews and the Community Risk department can use the information, in conjunction with the National Fire Chiefs Council Community Risk Calendar (Appendix 1) to inform their planning for prevention and protection work within the station area over a 12 month period.
- 1.4 There are a number of development plans for housing across the two counties up to 2030. Around 50,000 new homes are planned to be built up to 2031, a rate of about 4,500 per year. Most of the housing development is planned for sites within and around the larger urban areas, particularly the two cities of Worcester and Hereford and other main towns. It will be important to monitor the potential impact of this growth on our services, as population and vehicle numbers will continue to increase in these areas over this period. For example, there may be an increased need for more community safety and road safety activities in these areas, and with more traffic on the roads, there may be an impact on how quickly fire engines can reach incidents. Over the next few years, incident numbers and the types of incidents occurring in newly built areas will be monitored to help to assess any potential impact.
- 1.5 The current version of Station Risk Profile (dated October 2021) uses 12 years of incident data (2009/10 - 2020/21), following data quality control carried out between May 2019 and January 2020. The Fire Risk map has also been updated to include 2019/20 incident data, which is used to help identify those local neighbourhoods at potentially higher fire risk in the station area. This is also cross-referenced against the characteristics of households in station areas using Mosaic data<sup>1</sup>, which helps to identify those households at potentially higher fire risk.
- 1.6 Heat maps have also been prepared for RTCs and Water Rescues (where relevant) to highlight areas of potentially higher risk. The heat maps will be updated each year, where appropriate. A full update of the risk maps will also be prepared when new demographic data is available from the 2021 Census, and when updated Mosaic data becomes available.

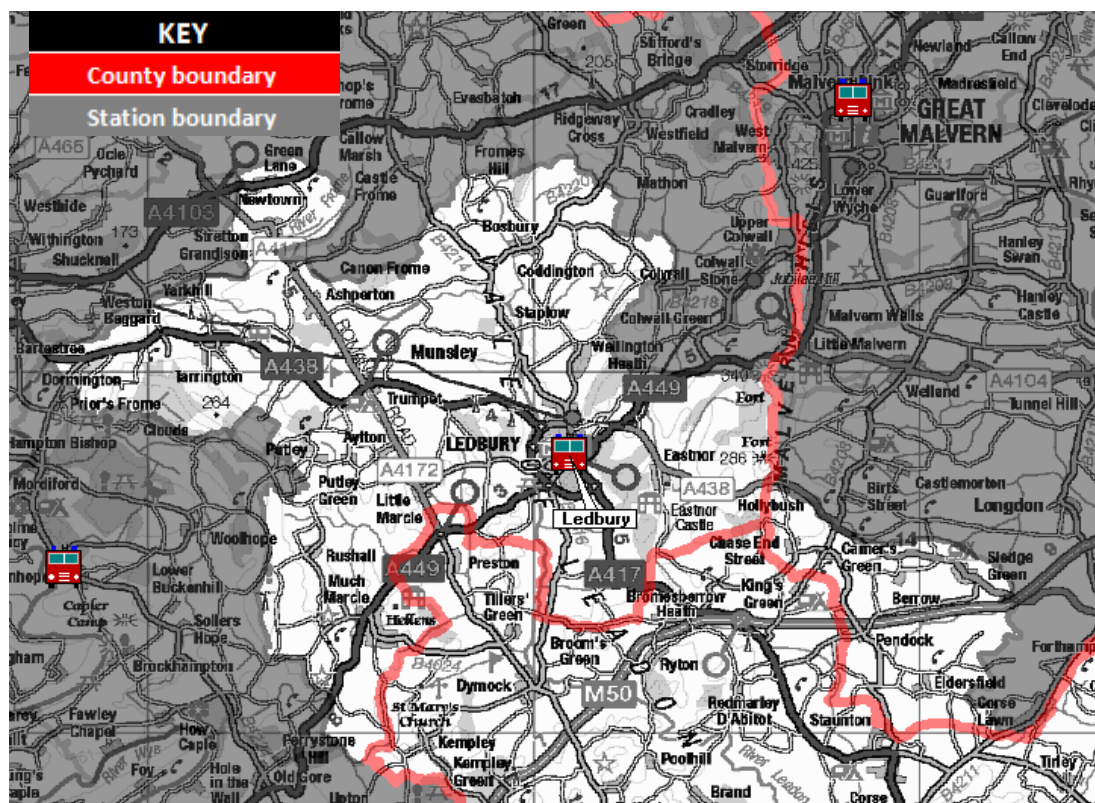
---

<sup>1</sup> Mosaic data provides a detailed and accurate understanding of each citizen's location, their demographics, lifestyles and behaviours.

## 2 Ledbury Fire Station Overview

- 2.1 Ledbury Fire Station is located at Bye Street just outside of the town centre. The Fire Station covers a large area of around 66 square miles, which houses 18,290 residents<sup>2</sup> living in 7,930 homes. The latest demographic data for Ledbury estimates that 41 per cent residential housing has a head of the household aged over 66. 18 per cent of residential households have a single elderly resident<sup>3</sup>.
- 2.2 The Station has one fire engine which is used to respond to all incident types. There is an Incident Support Vehicle and a Drone which is used to support incident commanders.
- 2.3 During 2020/21 there were 124 incidents within the Fire Station ground, around 2 per cent of the Service's total activity. The Station also receives and provides operational support to and from neighbouring Fire Stations as well as to locations further afield if needed.
- 2.4 Map 1 shows a general overview of the Fire Station ground. The shape of the Station ground is based on areas nearest to the Station as determined by the Service's Fire Control.

**Map 1: Overview of Ledbury Fire Station ground**



<sup>2</sup> Population data is a mid-2019 estimate which can be found on the nomis website

<sup>3</sup> Household estimates are taken from data extracts provided by Experian's Mosaic Public Sector 2019 and demographic data from Experian's Mosaic Public Sector 2018

## **Station Crewing Systems**

- 2.5 Within Hereford & Worcester Fire and Rescue Service, there are different ways of crewing the Fire Stations. This is determined by the level of risk associated with a Station area and the needs of the local community. The busiest Fire Stations are permanently crewed 24 hours a day (known as the Wholetime Duty System). The less busy Fire Stations are crewed by On-Call firefighters, who live or work locally and can respond to emergency calls quickly when they are needed (known as the Retained Duty System or RDS). The other duty system is called Wholetime Day Duty, where either the Fire Station or a Fire Engine is permanently crewed for 12 hours during the day and by On-Call firefighters at night.
- 2.6 The Fire Engine and Incident Command Unit at Ledbury Fire Station are crewed by a Retained Duty System crew who can usually respond within six minutes of being alerted.

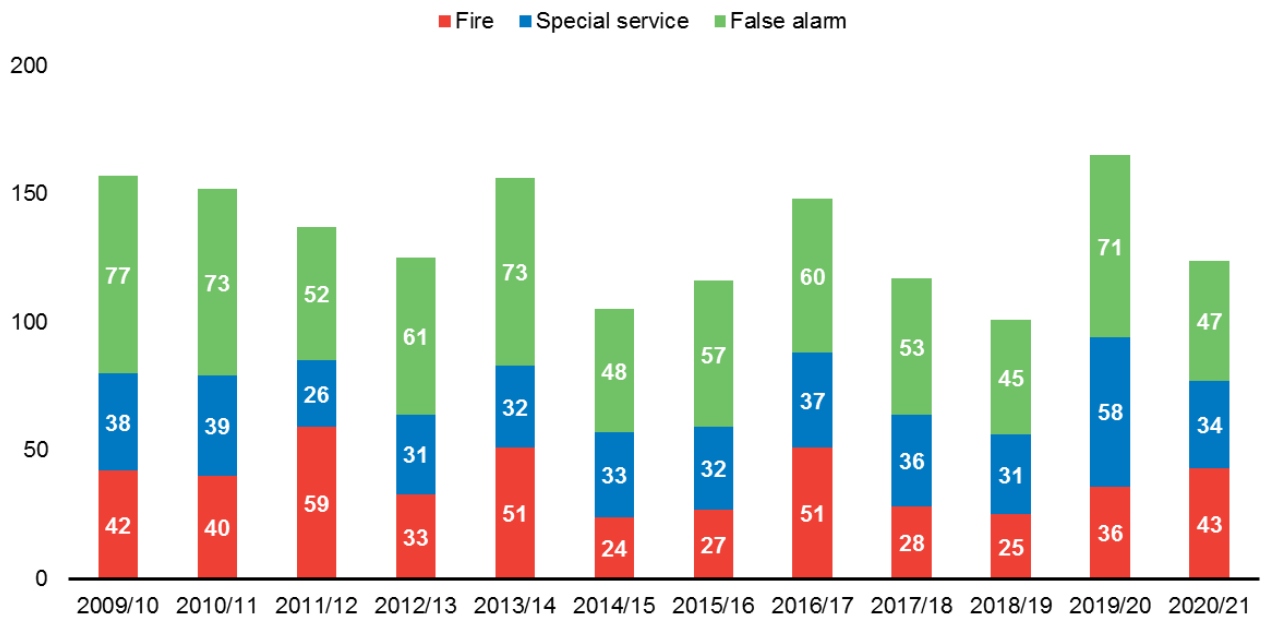
### 3 Incident Overview

3.1 The Service attends a range of incidents that can be divided into three broad categories; Fires, Special Services and False Alarms. Each category has a range of incidents that pose different types and levels of risk to communities and to the firefighters who tackle them. The categories are shown below:

• <b>Fires</b>	these include dwelling fires, other building fires, outdoor fires and car fires
• <b>Special Services</b>	these incidents are those such as Road Traffic Collisions, flooding, person rescues, spills, leaks and animal rescues
• <b>False Alarms</b>	these are when the Service responds to fire alarms or phone calls where there is no actual incident

3.2 Over the last 12 years (1 April 2009 to 31 March 2021), there were 1603 incidents within Ledbury Fire Station’s area. The vast majority of these were false alarms (44.73 per cent), one in three was either a fire (28.63 per cent) or a special service (26.64 per cent) incident. Over the 12 years, there was a gradual reduction in the number of fire and false alarm incidents recorded which decreased by 21.02 per cent.

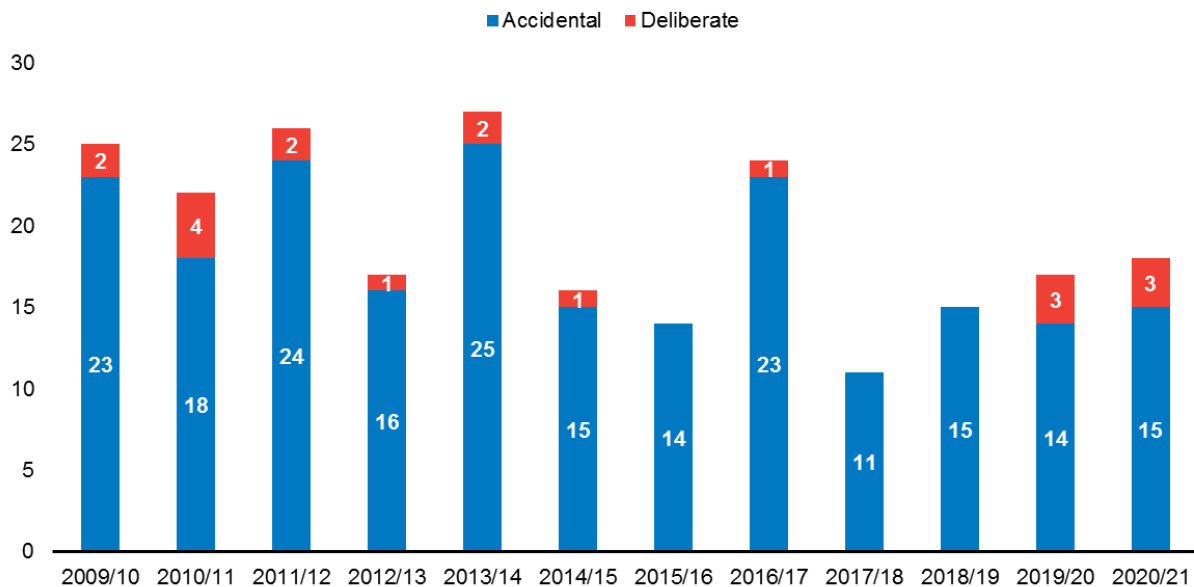
**Graph 1: Ledbury Fire Station area – Incidents occurred 2009/10 to 2020/21**



## Fires

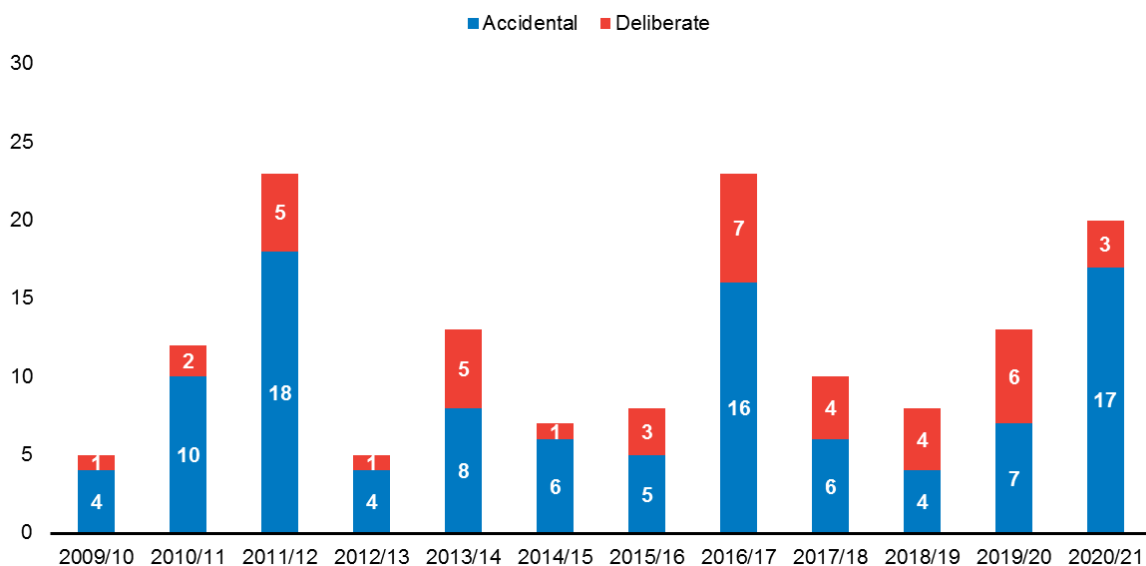
- 3.3 The Fires category is generally broken down into two main types; Primary Fires, which are mainly building fires and vehicle fires, and Secondary Fires, which are outdoor fires affecting areas such as grassland, woodland, crop fields and gardens. Primary Fires saw a reduction in the number of incidents recorded over the last 12 years by 28.00 per cent.

**Graph 2: Ledbury Fire Station area - Primary Fires 2009/10 to 2020/21**



- 3.4 Graph 2 shows a breakdown of Primary Fires in Ledbury Fire Station area over the last 12 years. It shows that the majority of Primary Fires were caused accidentally.

**Graph 3: Ledbury Fire Station area - Secondary Fires 2009/10 to 2020/21**

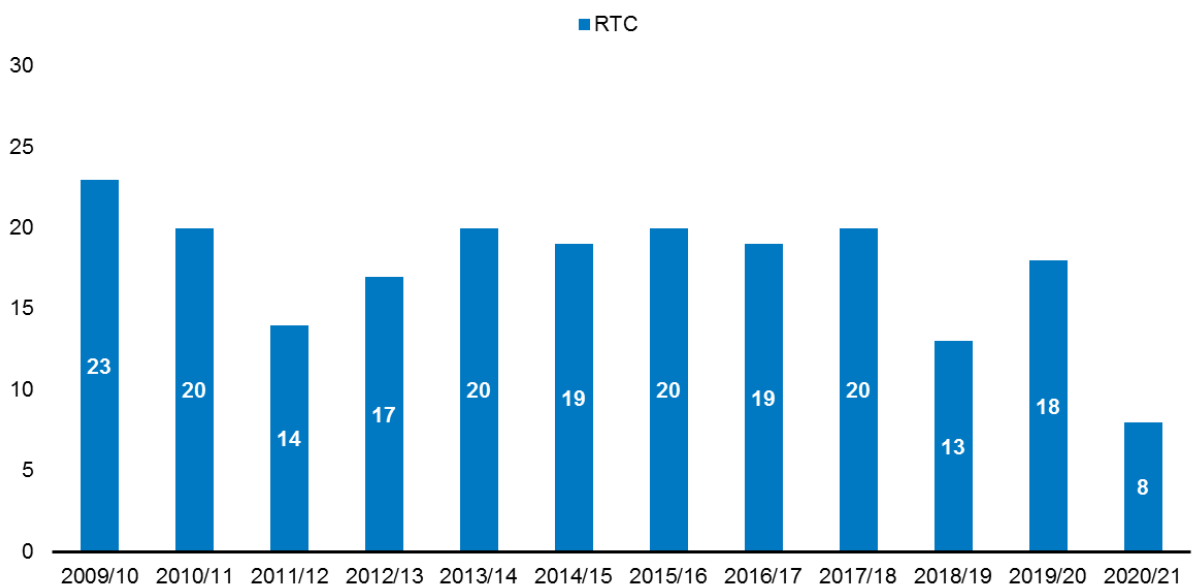


- 3.5 Graph 3 shows a breakdown of Secondary Fires in Ledbury Fire Station area over the last 12 years. Secondary Fires mainly involve loose refuse (typically a bin fire) and grassland fires, especially during warm summer months. The graph shows that the numbers of accidental and deliberate Secondary varies from year to year spiking at 23 incidents in 2011/12 and 2016/17.
- 3.6 Accidental Dwelling Fires are a particular risk to life for both householders and firefighters. These are discussed further in Section 5 later in this report.

### **Special Service Incidents**

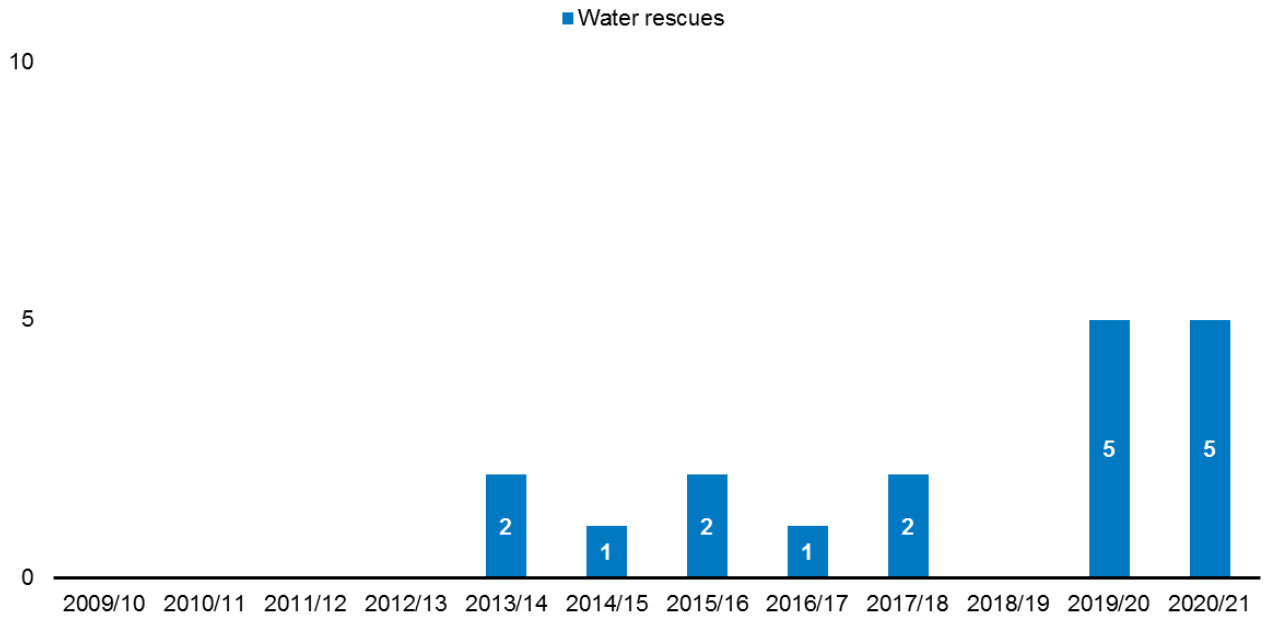
3.7 In terms of Special Service incidents, the main category for Ledbury Fire Station area involving potential risk to life is Road Traffic Collisions (RTCs). Over the last 12 years, the number of RTCs attended has shown a decrease of 65.22 per cent. This is shown in Graph 4 below. Over the same period, the number of incidents involving rescues from water varied but remained low with up to 2 incidents in a single year except for 2019/20 and 2020/2021, where a spike was caused by two flooding events in November 2019 and February 2020. This is shown in Graph 5 below.

**Graph 4: Ledbury Fire Station area – Road Traffic Collisions attended 2009/10 to 2020/21**





**Graph 5: Ledbury Fire Station area – Water Rescues 2009/10 to 2020/21**

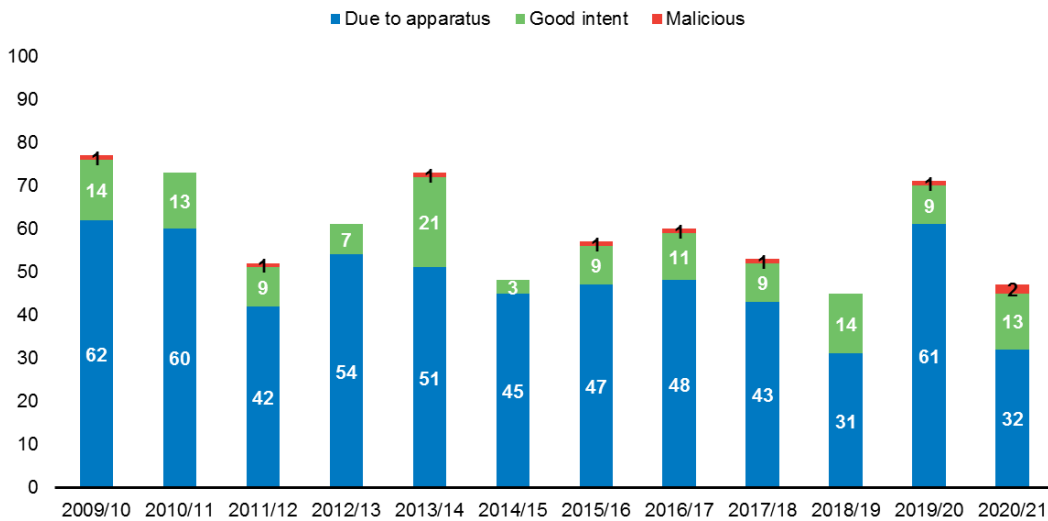


3.8 RTCs and Water Rescues are discussed further in Sections 6 and 7 respectively later in this report.

**False Alarm Incidents**

3.9 False Alarm incidents are categorised into False Alarm Malicious, False Alarm Good Intent and False Alarm due to Apparatus. Over the last 12 years, the total number of false alarms attended has decreased by 38.96 per cent. The biggest decrease was found in Fire Alarms Due to apparatus by 48.39 per cent.

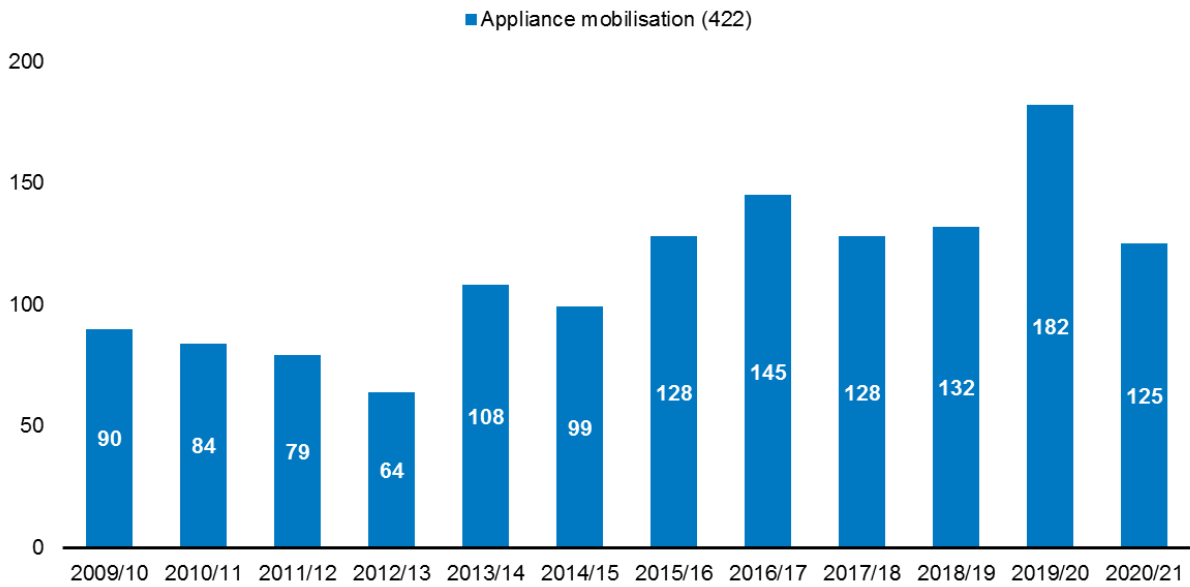
**Graph 6: Ledbury Fire Station area – False Alarms 2009/10 to 2020/21**



## Appliance Mobilisation

3.10 Although over the last 12 years (1 April 2009 to 31 March 2021) there were 1,603 incidents within Ledbury's station area, Ledbury's appliance has actually been mobilised 1,364 times.

**Graph 7: Ledbury Fire Station Activity 2009/10 to 2020/21**



This has been broken down into the Service's area and 'over the border' mobilisations in table below.

**Table 1: Ledbury's appliance mobilisations 2009/10 – 2020/21**

Mobilisation	2009 /10	2010 /11	2011 /12	2012 /13	2013 /14	2014 /15	2015 /16	2016 /17	2017 /18	2018 /19	2019 /20	2020/ 21
1st pump within station area	69	61	63	49	72	69	89	113	92	79	134	96
2nd pump within station area	0	2	0	1	5	2	4	2	2	3	3	3
1st pump in other station areas	9	8	10	5	12	6	10	10	7	13	17	8
2nd pump in other station areas	7	7	3	6	5	9	12	6	10	15	13	18
1st pump over the border	5	6	3	1	5	1	1	6	6	7	4	0
2nd pump over the border	0	0	0	0	0	0	0	1	0	1	2	0
NROB	-	-	-	1	5	10	7	4	2	11	6	-
NOTR	-	-	-	1	4	2	5	3	9	3	3	-
Total	90	84	79	64	108	99	128	145	128	132	182	125

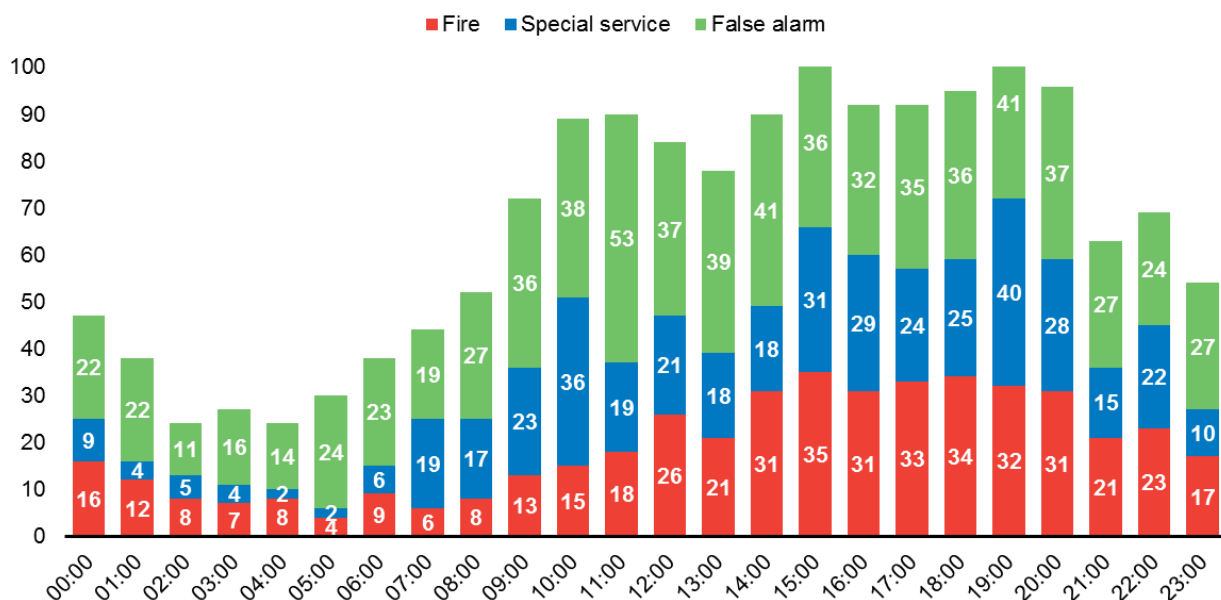
\* Mobilisation as second, third, ..., *n* pump

Out of 1,364 Ledbury's appliance mobilisations, 1,013 were primarily located within Ledbury's station area (74.26 per cent), followed by Malvern's station ground with 5.93 per cent and Upton upon Severn with 4.54 per cent.

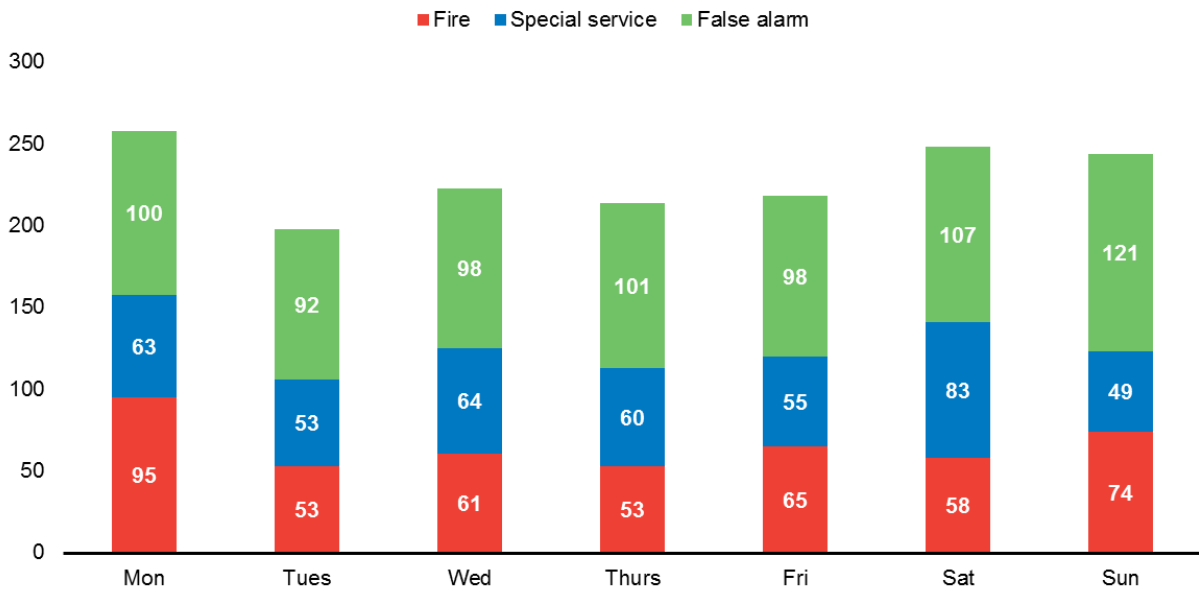
## 4 Ledbury Fire Station Incident Occurrence

- 4.1 It is important for Station Commanders at the Service's Fire Stations to understand when incidents are more likely to happen, so that the right resource can be made available at the right time.
- 4.2 Using the last 12 years of incident data (2009/10 to 2020/21) for Ledbury Fire Station area, incidents can be analysed in detail by time, day and month. This can help to identify particular trends, such as if most incidents are occurring during daylight hours which helps Station Commanders in ensuring enough resources are in place.
- 4.3 The following graphs show the specific hours, days of the week and months when incidents occurred in Ledbury Fire Station area. Station Commanders will be able to examine the information closely to help identify any trends in incident types or occurrences, so that they can plan to address them with appropriate actions.

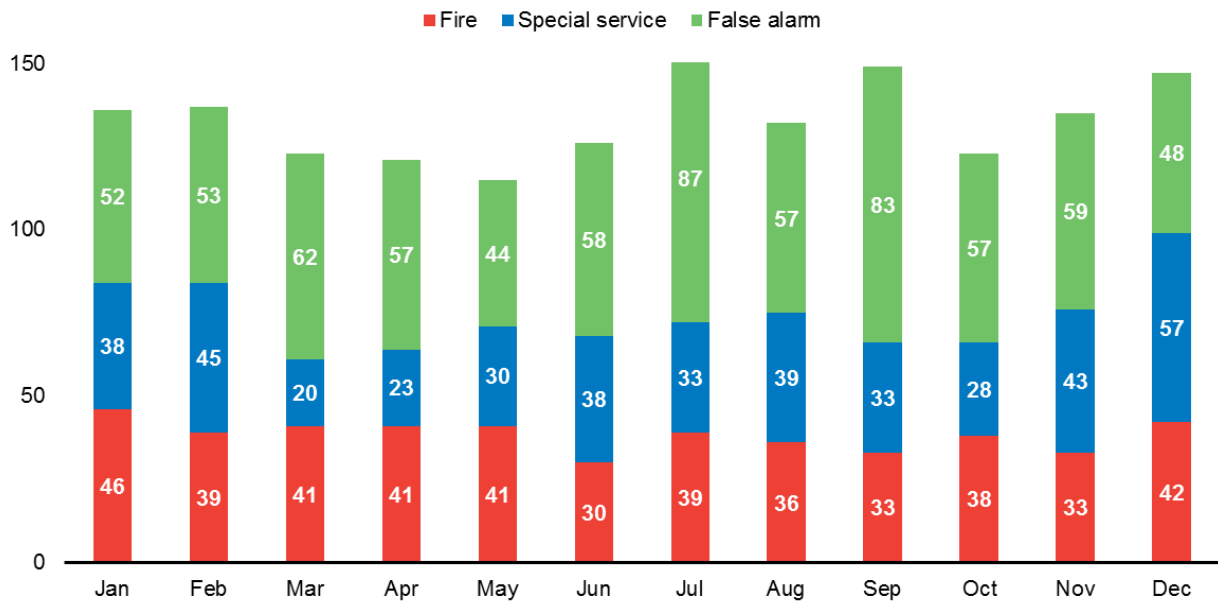
**Graph 8: Ledbury Fire Station area- Hour of the Day Incidents Occurred 2009/10 to 2020/21**



**Graph 9: Ledbury Fire Station area – Day of the Week Incidents Occurred 2009/10 to 2020/21**



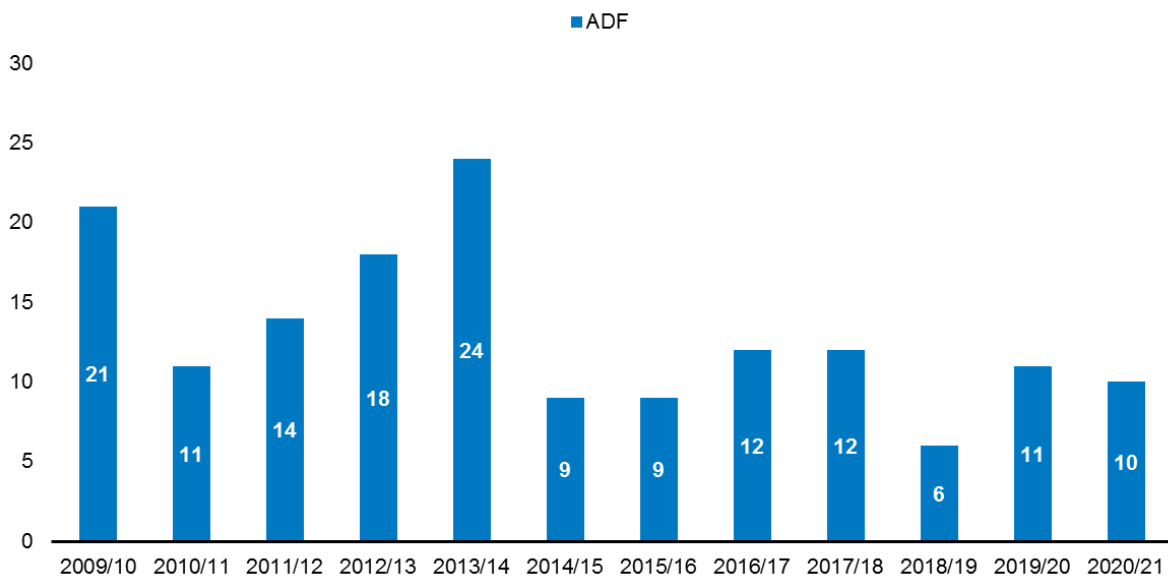
**Graph 10: Ledbury Fire Station area – Month of Year Incidents Occurred 2009/10 to 2020/21**



## 5 Risk Areas In Relation To Accidental Dwelling Fires

5.1 This section looks specifically at Accidental Dwelling Fires and the potential risks within Ledbury Fire Station area. On average, there have been 9 Accidental Dwelling Fires per year for the past eight years as can be seen in Graph 11. In 2020/21, there were 10 Accidental Dwelling Fires which equates to just over 1 incident per every 1,000 households<sup>4</sup>. Accidental Dwelling Fires have the potential to pose the risk of serious injury or death for the occupants and also for the firefighters attending the incident.

**Graph 11: Ledbury Fire Station area – Accidental Dwelling Fires 2009/10 to 2020/21**



5.2 The CRMP Risk Review 2018 mapped the incidence of Accidental Dwelling Fires across the two counties and assigned risk ratings to highlight those areas that are at high, medium and low fire risk. This was worked out using a sophisticated Fire Risk Model, which is also used by Cumbria and Lancashire Fire and Rescue Services among others. Details of the calculations involved can be found in the CRMP Risk Review document.

5.3 The analysis for Ledbury Fire Station area shows that most areas are at low risk of Accidental Dwelling Fire. However, it also shows that a small number of areas were considered to be at medium risk, there were no high risk areas. This does not mean that living in a high risk area will lead to someone having an Accidental Dwelling Fire, but it does mean that high risk areas tend to have more fires than would normally be expected. The fire risk areas for 2017/18 to 2019/20 are mapped on Map 2 where the medium risk areas are shown in blue. Table 2 provides a list of those areas within Ledbury Fire Station ground that have been considered to be at medium risk at some point during the last five years by the Fire Risk Model.

<sup>4</sup> Household estimates are taken from data extracts provided by Experian's Mosaic Public Sector 2019 and demographic data from Experian's Mosaic Public Sector 2018

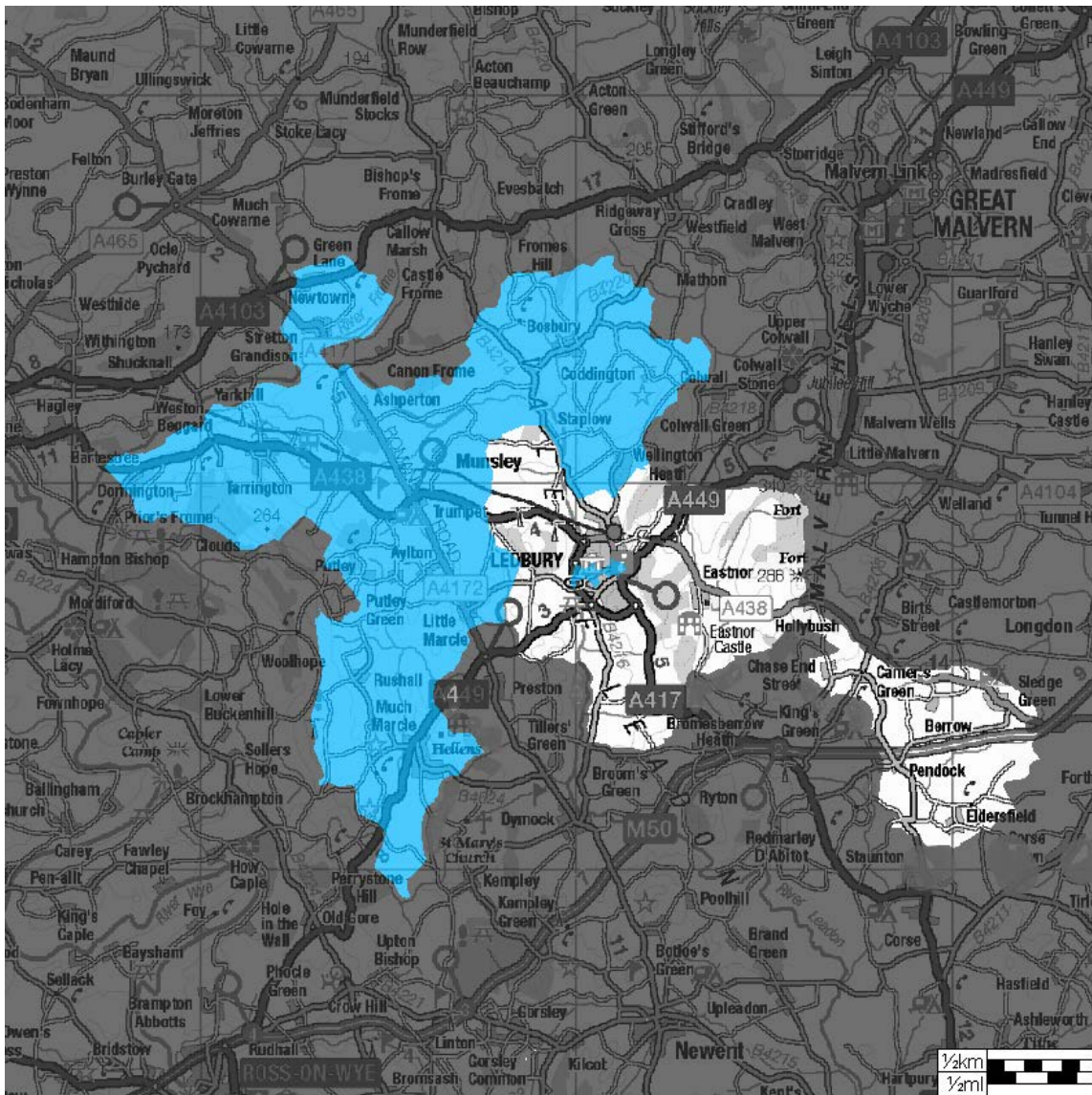
**Table 2: Areas most at risk of fire 2015/18 – 2017/20**

Local Authority	LSOA Name	Local area name	LSOA Mosaic Classification <sup>5</sup>	Risk Level 2015/2018	Risk Level 2016/2019	Risk Level 2017/2020
Herefordshire	Backbury	Hopsvalley	A Country Living	M	M	M
Herefordshire	Three Crosses	Trumpet	A Country Living	M	M	M
Herefordshire	Ledbury North	Ledbury Central	N Vintage Value	M	M	M
Herefordshire	Old Gore	The Slip	A Country Living	M	M	M
Herefordshire	Hope End	Greater Bosbury	A Country Living	L	L	M

5.4 The local area of Greater Bosbury has been classified as a medium risk area by the Fire Risk Model, increasing from a low risk in 2016/19. Other medium risk areas identified are, Hopsvalley, Trumpet and The Slip. The most common household characteristic for these areas is shown as Country Living. Ledbury Central has also been classified as a medium risk area, however the mosaic classification is Vintage Value. Community risk activity is recommended in these particular areas to prevent the fire risk from increasing further. More detailed information on individual households to increase the accuracy of targeting can be requested.

<sup>5</sup> LSOA Mosaic classification was assigned by using the most common household characteristic seen in each LSOA using Experian Mosaic Public Sector 2019. More detail on individual postcodes for more accurate targeting can be requested.

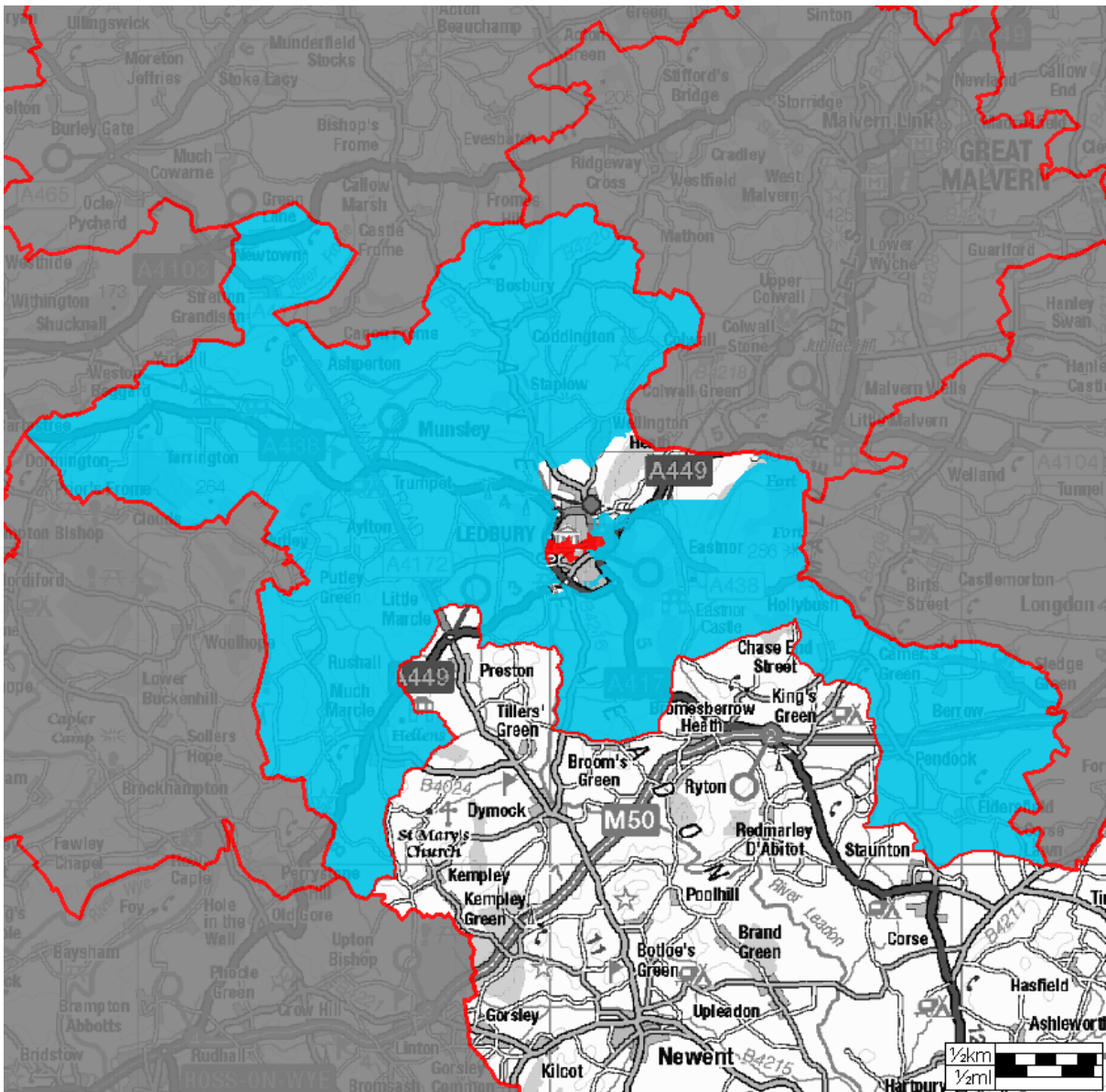
**Map 2: Ledbury Fire Station area – Risk areas 2017/18 to 2019/20**



5.1 In addition to mapping areas at risk, the CRMP Risk Review also examined the characteristics of households that tend to have more Accidental Dwelling Fires than expected given the relative number of households in each group – that is, Groups A, C, G, J, M, N, and O. When examining these groups in detail, it can be seen that those households share characteristics of higher levels of dependency, disadvantage and vulnerability (Groups M, N and O), they are now being joined by households in the less populated rural areas (Groups A and G). Group C has not been mapped and further details on this can be found in the CRMP Risk Review, instead focus has been on six groups (A, G, J, M, N and O) and these are shown on Map 3. They correlate closely with the risk areas identified in Map 2.



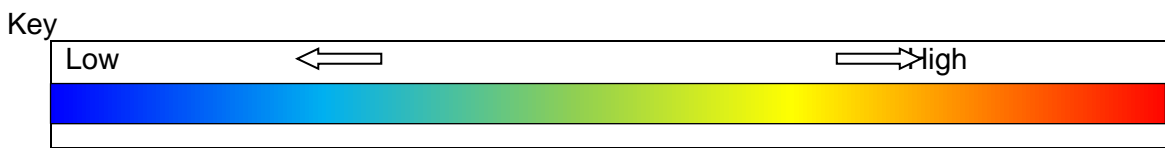
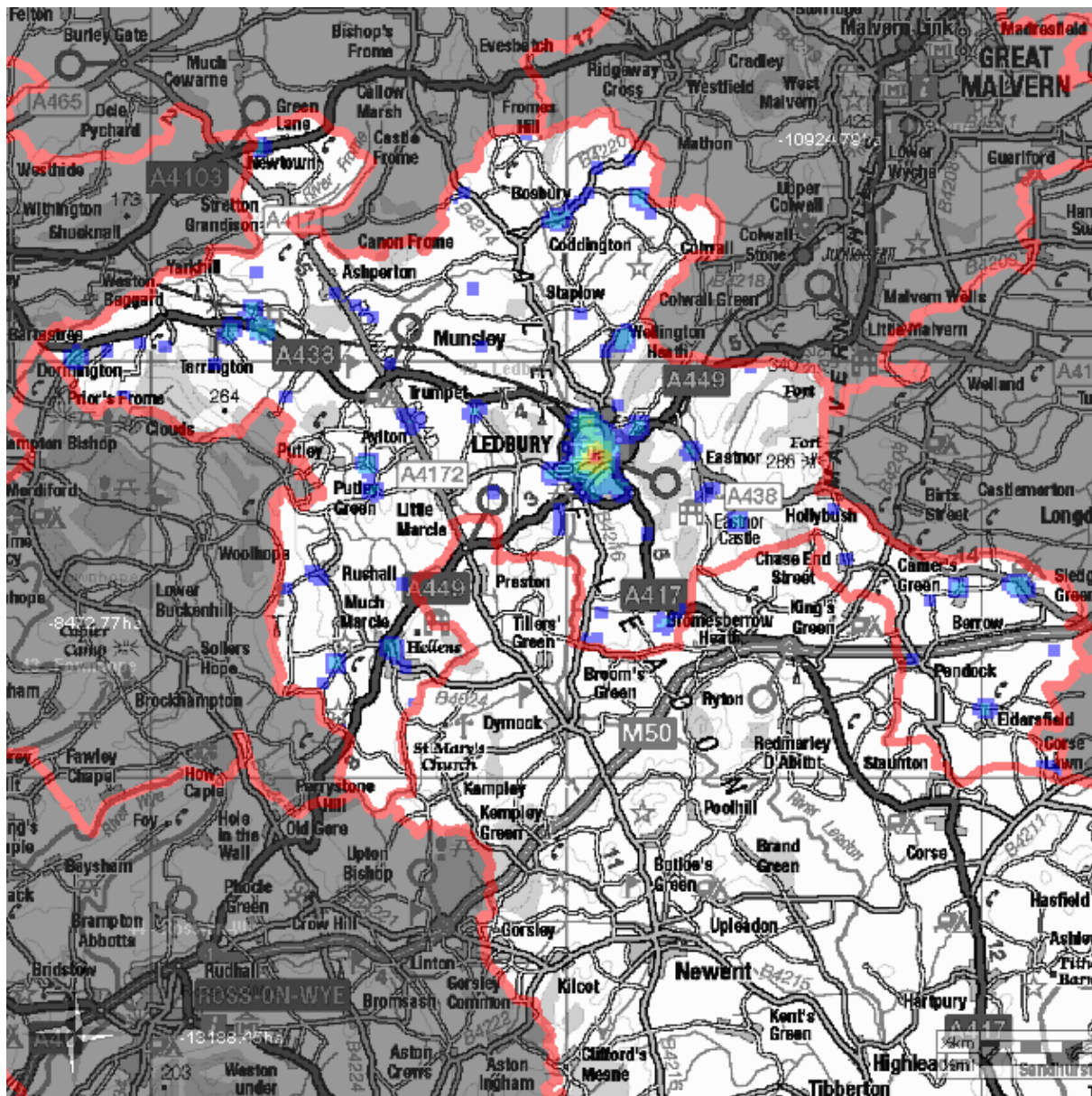
**Map 3: At risk LSOA's by Mosaic Group 2017/18 to 2019/20**



- A – Country Living
- G – Rural Reality
- J – Rental Hubs
- M – Family Basics
- N – Vintage Value
- O – Municipal Challenge

5.2 More information on these Mosaic group types can be found in the CRMP Fire Risk Review.

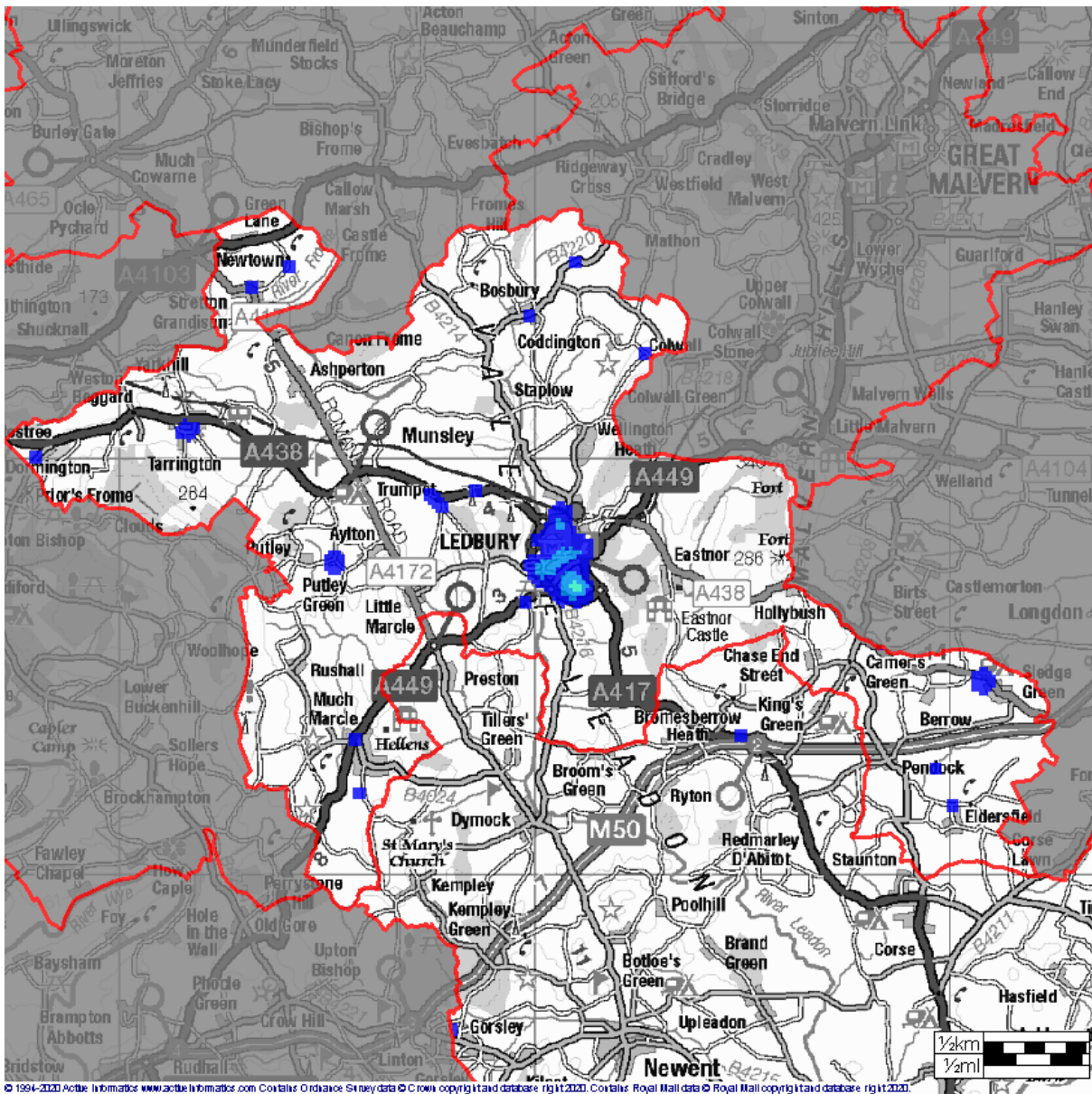
**Map 4: Ledbury Fire Station area – Accidental Dwelling Fires (2009/10 to 2020/21)**



- 5.3 Map 4 shows the concentration of Accidental Dwelling Fires in Ledbury Station Ground area showing data between (2009/10 to 2020/21). This correlates with Map 5 which shows where the Community Risk department has been targeting Safe and Well Checks between 2017/18 to 2019/20.
- 5.4 Mapping Accidental Dwelling Fires and those households that tend to have more accidental fires than others provides Station Commanders and Community Risk officers with valuable information that will help to prioritise how they target their prevention and protection activities. When examining the local areas at potential risk, the maps can be expanded to show street level information about households and

risks. Additional information about how to best contact those households at potential risk will also be available through the Community Risk department.

**Map 5: Community Risk Activity – Safe and Well Checks 2017/18 to 2019/20**



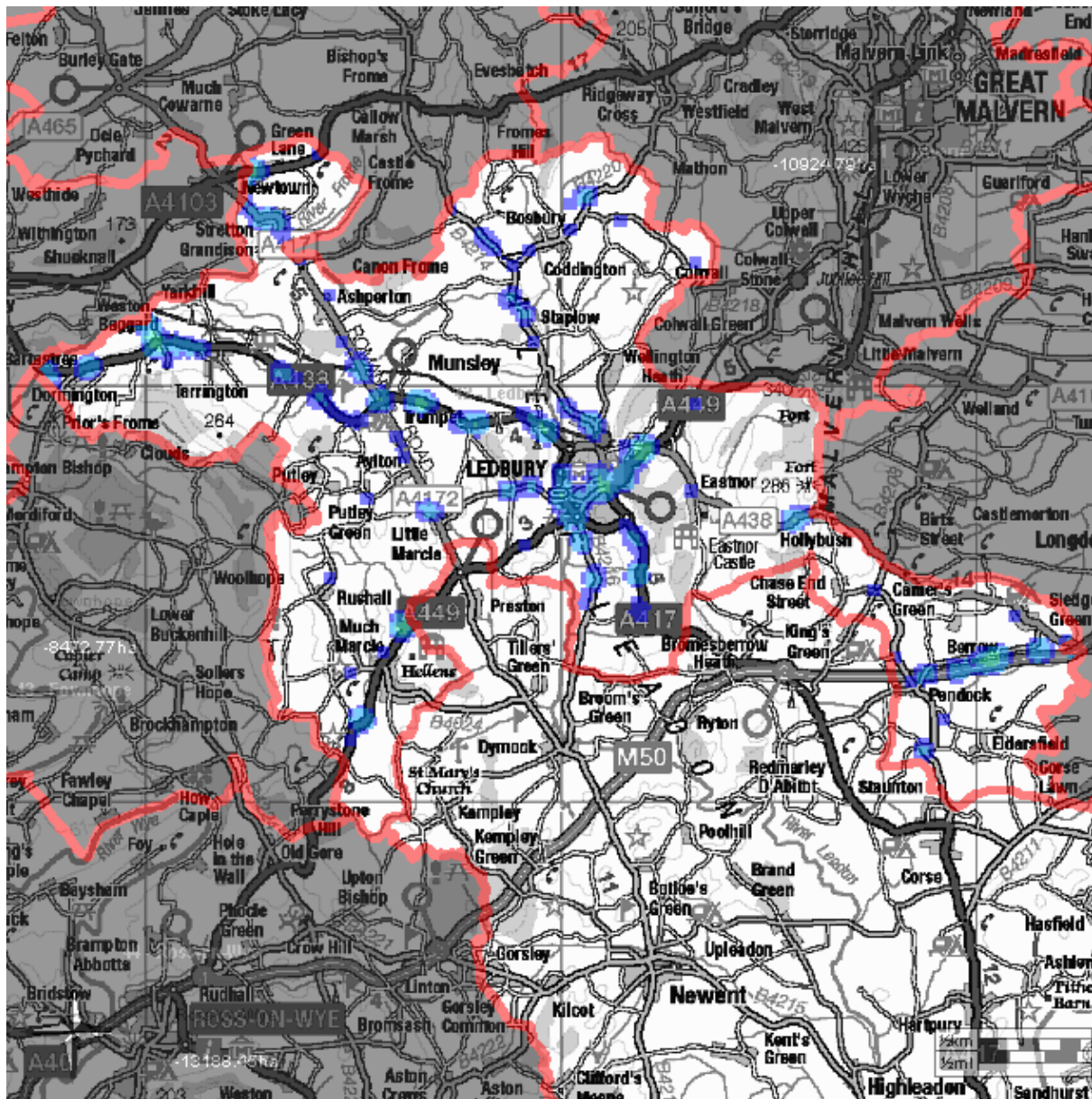
Key



## 6 Road Traffic Collision Incidents

6.1 The CRMP Risk Review 2018 identified Ledbury Fire Station area as a low risk area for Road Traffic Collisions (RTCs) in 2017/18 – 2019/20. This was determined using a risk model based on the number of RTC incidents attended and the severity of those incidents in terms of injury to persons. Map 6 below shows the location of all RTCs that occurred within Ledbury Fire Station area over the last 12 years (2009/10 to 2020/21) at 100 m grid cell. The hotspots tend to be concentrated on the roads around the town centre.

**Map 6: Ledbury Station area – RTC Hotspots 2009/10 to 2020/21**



Key



- 6.2 The map shows hotspots ranging from **high** (i.e. where RTCs occurred most frequently) graduating to **low** (i.e. where RTCs occurred least frequently). Where no colour is shown, this indicates that HWFRS did not attend any RTC incidents in the last 12 years.
- 6.3 The maps can be expanded to show individual roads and the location and type of each RTC incident attended. This will provide Station Commanders and Community Risk officers with important data when working with local authority and road safety partners.

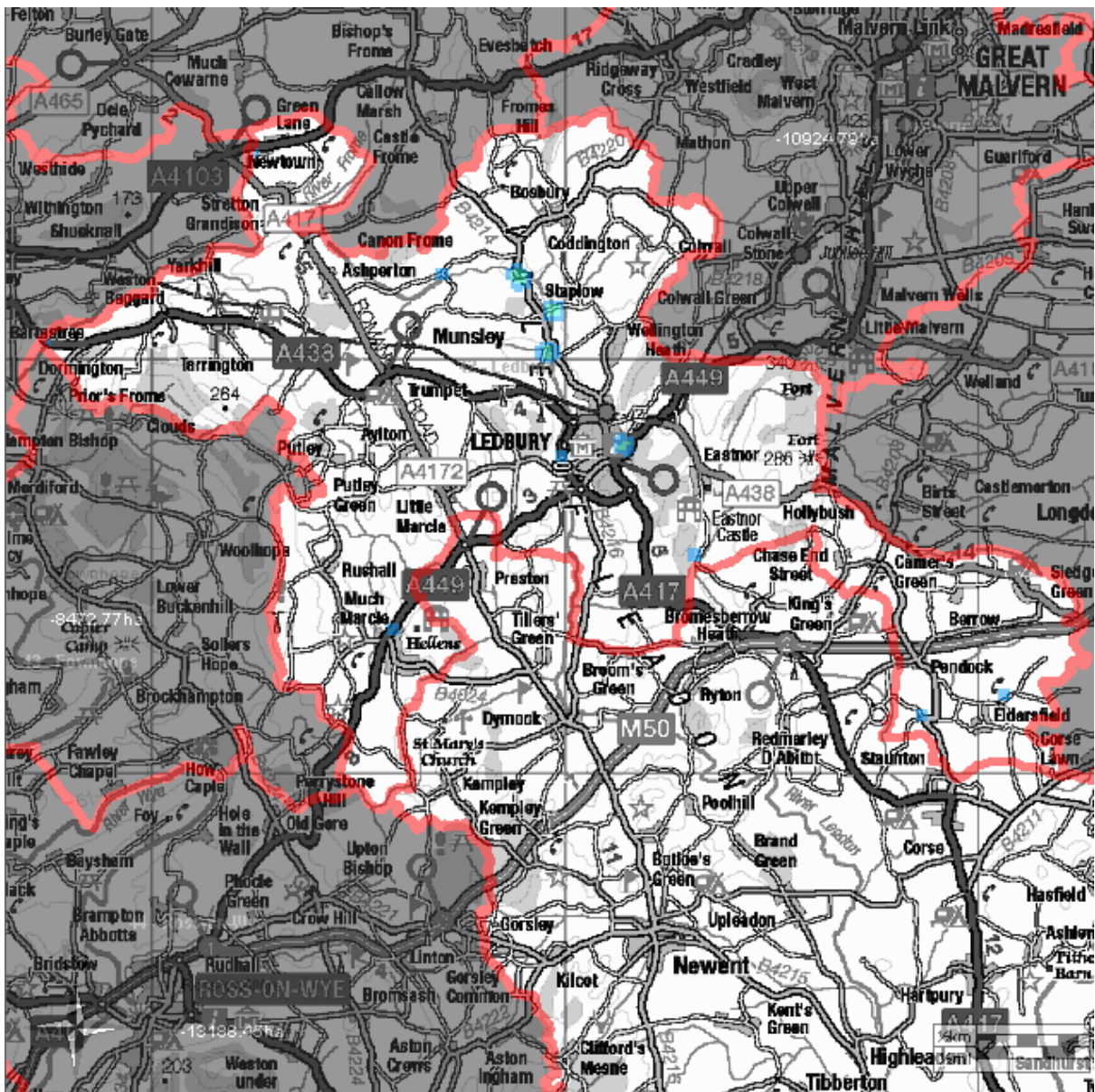
## **7 Other Potential Life Risks**

- 7.1 In addition to Accidental Dwelling Fires and Road Traffic Collisions, the Service attends a number of other incidents which have the potential to harm life and property. Among such incidents are water rescues and weather-related issues such as wide area flooding and wildfire. Heritage buildings also pose a potential risk, with many having unique features and important and irreplaceable artefacts. A significant number are also timber-framed and liable to a faster spread of fire.
- 7.2 Heritage issues are less likely to be a risk to life, but safeguarding the heritage environment (both built and natural) is an important part of the Service's role in helping to improve the safety of the community. Heritage issues are discussed further in Section 8 below.

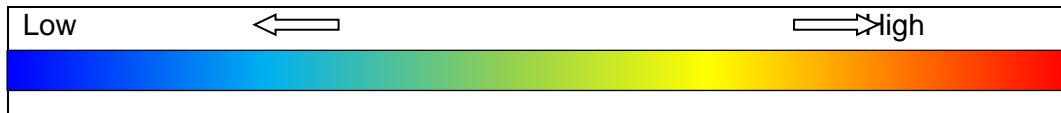
### **Water Incidents**

- 7.3 Map 7 below shows the location of all water incidents involving life risk that have occurred within Ledbury Fire Station's area over the last 12 years (2009/10 to 2020/21) at 100 m grid cell.

Map 7: Ledbury Fire Station area – Water-related life risk incidents 2009/10 to 2020/21



Key



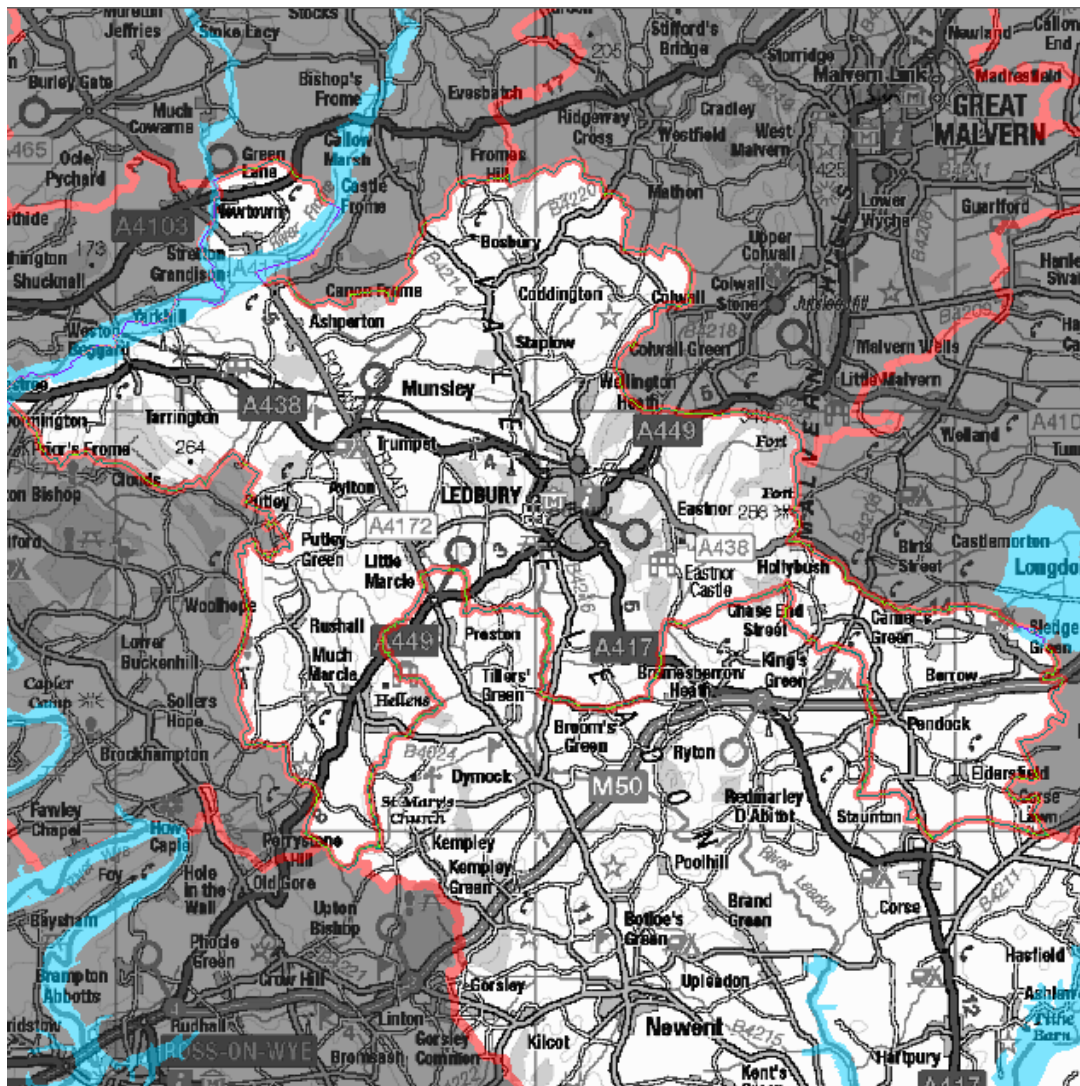
- 7.4 The majority of rescues have involved vehicles in flood water around the Staplow area during periods of adverse weather.
- 7.5 As with the maps of accidental fires and RTCs, the maps of water rescues can be expanded to show incidents in more detail, which will assist Station Commanders in familiarising crews with areas of concern and in working with the Community Risk department and partner agencies to carry out preparatory and preventative work and raise awareness within the local community.
- 7.6 Other water-related incidents include rescues of people from flooded properties, lakes and quarries as well as animal rescues from water. These can also be mapped to assist Station Commanders and Community Risk officers in their partnership work with water safety agencies and landowners.



## Flooding Areas

- 7.7 Maps prepared by the Environment Agency show areas that are likely to flood in the event of adverse weather conditions. Fire Station crews also have access to more detailed maps through their Mobile Data Terminals carried by every fire engine, as well as via the [Environment Agency website](#).
- 7.8 Map 8 below shows the locations within Ledbury Station area most likely to flood which are primarily along the course of the River Leadon and its tributaries.

**Map 8: Ledbury Fire Station area – Flooding areas identified by the Environment Agency**



- 7.9 Information about areas likely to flood is used during flood planning with water safety partners and can be used as part of the Safe and Well Checks carried out with residents in these areas. This includes information on flood risk and advice on early evacuation in the event of flooding. Fire Station crews will also find more specific information about flood planning on the Service intranet.

## 8 Prevention and Protection Activities

8.1 All Fire Station crews and Community Risk officers have a key role to play in preventing incidents from happening and in protecting life and property in the event of emergency incidents. In helping to deliver the Community Risk Management Plan over the next few years, Ledbury Fire Station crews and the Community Risk department will be involved in a range of activities including the following:

a) NFCC Community Risk Calendar 2021

8.2 Each year the National Fire Chiefs Council prepares a calendar of events and campaigns to help promote community safety across the country. The Service uses this to help plan local events and campaigns throughout the year, in addition to more local community safety activities, and Fire Stations are fully involved in delivering this in their local areas. The 2021 Calendar can be found in Appendix 1 of this report.

b) Safe and Well Checks

8.3 These checks involve a visit to people's home to deliver fire safety advice and to install smoke alarms where needed. They help to identify other potential areas of concern, which may require additional input from partner agencies, in order to help people remain safe and well in their own homes. Having identified households and areas likely to be more vulnerable to accidental dwelling fire as set out in Section 5 of this report, Station Commanders will be able to cross-reference the most at risk areas when working with the Community Risk department and community safety partners to introduce more targeted prevention activities.

c) Intel Process

8.4 Every Fire Station has identified a number of specific risks in their area, which are scheduled to be visited and reviewed on a regular basis. The specific risks for Ledbury Fire Station are listed on the Mobile Data Terminals and on the Service intranet at the following link: [Ledbury Fire Station Risk Premises](#). The Intel Process also enables crews to identify potential new risk properties and sites. In addition, each Fire Station presents their Top 5 Risks based on the specific risks to firefighters, the public, the environment, the local economy and heritage. These are reviewed by all firefighters at the Fire Station as part of their competency training.

d) Technical Fire Safety Inspections

8.5 These involve Technical Fire Safety officers conducting risk based audit and intelligence led audit programmes looking at the potential risks in commercial premises including occupancy and management procedures. This helps to ensure the premises meet fire safety regulations.<sup>6</sup>

---

<sup>6</sup> The [Regulatory Reform \(Fire Safety\) Order 2005](#)

e) Business Fire Safety Checks

- 8.6 Commercial properties regarded as low risk are visited by the Wholetime crews at Fire Stations, which involves crews checking for basic fire safety requirements. Any areas of concern are highlighted to Technical Fire Safety officers for further investigation. Additional work is being undertaken by the Community Risk department to map commercial premises and their associated risks and once complete this will be made available to support Fire Stations in their work with local businesses.

f) Heritage sites

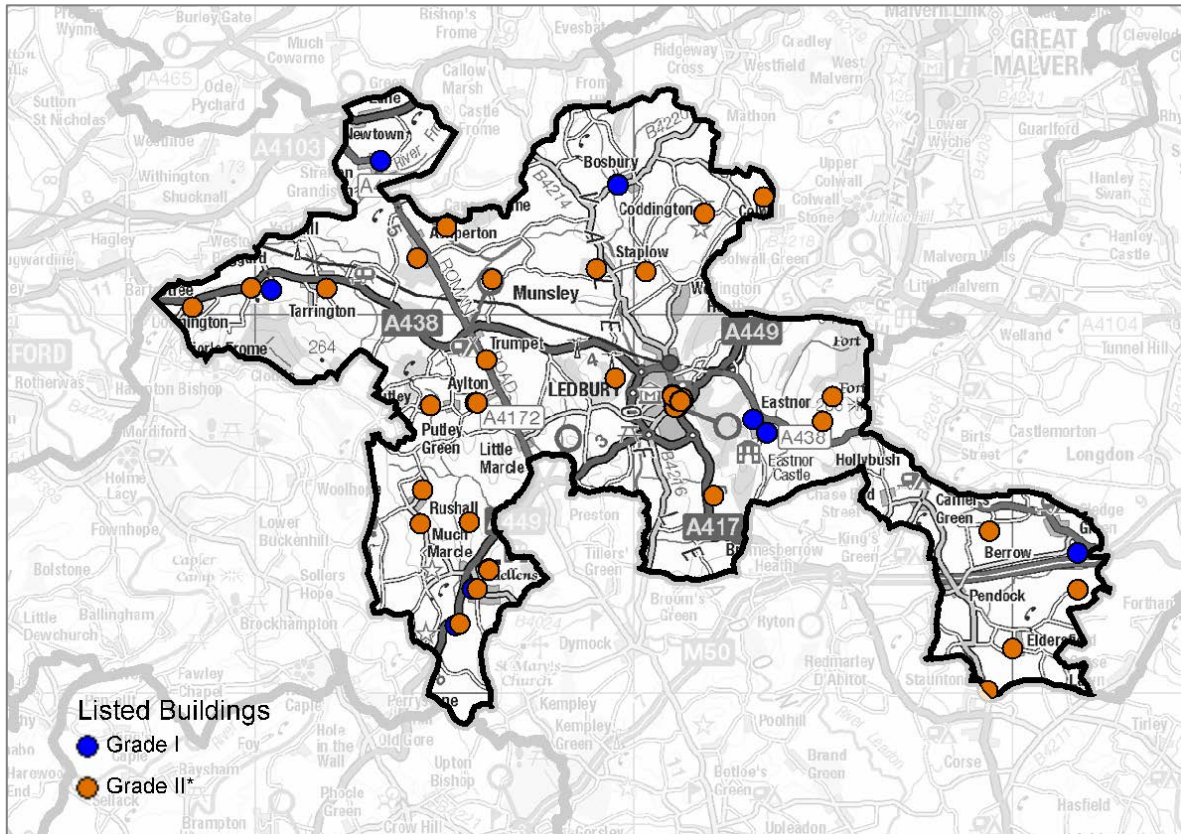
- 8.7 At March 2020, there were over 12,000 'listed' buildings and sites across Herefordshire and Worcestershire. 'Listing' is a process used to grade heritage importance and interest. Grade I and II\* buildings and sites are of particular importance, of which there are currently 920 in the two counties. Ledbury Fire Station area contains 12 Grade I and 50 Grade II\* buildings and sites. Section 9 provides a map and list of all such buildings and sites in Ledbury Fire Station area. This will support Station Commanders in familiarising their crews with their locations, nature and value, and will help in planning emergency cover, preventative and salvage arrangements.

## 9 Grade I and Grade II\* Listed Buildings

9.1 Grade I buildings are considered to be of exceptional interest. Grade II\* buildings are considered to be of particular importance of more than special interest.

9.2 The location of Grade I and II\* listed buildings are shown on Map 9 below.

**Map 9: Ledbury Fire Station area – Location of Grade I and Grade II\* Listed Buildings**



The tables on the following pages list each building by the Station area. The buildings and structures are drawn from English Heritage's Listed Buildings database<sup>7</sup>, updated to March 2020. More information can be gained from this website by entering the list entry number into the search facility.

<sup>7</sup> [Listed Buildings Database](#)

Ledbury – Grade I Listed Buildings

List Entry Number	Grade	Building Name	Eastings	Northings
1099011	I	Summerhouse about 100 yards West South West of Homme House	365265	231788
1156241	I	Church of St Bartholomew	365708	232746
1156712	I	Eastnor Castle	373500	236876
1266756	I	Church of St John The Baptist	373134	237227
1180078	I	Ledbury Park	371138	237564
1301825	I	Church of St Michael and All Angels	371282	237726
1349392	I	Market House	371102	237708
1099825	I	Church of St Mary	360403	240656
1349189	I	Bell Tower	369558	243421
1098890	I	Church of Holy Trinity	369549	243451
1157113	I	Church of St Lawrence	363285	244073
1098789	I	Parish Church	381707	233704

Ledbury – Grade II\* Listed Buildings

List Entry Number	Grade	Building Name	Eastings	Northings
1301682	II*	1 The Southend	371115	237565
1082831	II*	2 New Street	371110	237562
1082844	II*	2 The Southend	371117	237561
1349388	II*	30 The Homend	371017	237823
1349411	II*	4 New Street	371105	237561
1349379	II*	Abbey House	371029	237872
1301823	II*	Abbots Lodge	371211	237706
1099070	II*	Aylton Parish Church	365840	237666
1099072	II*	Barn and Cow House about 60 yards North West	365793	237675
1224771	II*	Barn to South of Wall Hills Farmhouse	369489	238325
1156646	II*	Bronsil Castle bridge and moat	374969	237179
1157254	II*	Bush Farmhouse and attached barn to North East	373414	243105
1099043	II*	Chandos	364338	234470
1082177	II*	Church of All Saints	371836	242680
1098989	II*	Church of St Andrew	366089	238804
1098876	II*	Church of St Bartholomew	366239	240937
1098909	II*	Church of St Bartholomew	364258	241493
1098847	II*	Church of St Faith	379381	234278
1349234	II*	Church of St John Baptist	379988	231172
1099882	II*	Church of St Peter	358320	240196
1302745	II*	Church of St Phillip and St James	361861	240688
1157237	II*	Churchyard Cross	371845	242669
1098968	II*	Churchyard Cross and base about 20 yards South	364613	237593
1082600	II*	Dingwood Park Farmhouse	372085	235212
1303025	II*	Dovecote about 20 yards North of Hellens	366144	233269
1349114	II*	Hall Court	364399	235365
1078234	II*	Hardwick Farmhouse	381717	232730

List Entry Number	Grade	Building Name	Eastings	Northings
1099048	II*	Hellens	366146	233244
1179796	II*	Hereford Lodge, Gate Piers To West And Flanking Bridge	359864	240711
1099009	II*	Homme House	365381	231827
1099012	II*	Huntley's Farmhouse	365633	234518
1082872	II*	Lower Hall	371256	237784
1082904	II*	Magistrates' House and Number 1, 2 and 3 Magistrates' Court	371185	237736
1266786	II*	Obelisk at National Grid Reference So 7523	375232	237827
1082833	II*	Old Talbot Inn	371064	237549
1224884	II*	Peg's Farmhouse	370293	241140
1099029	II*	Phillips House	365846	232750
1099008	II*	Putley Parish Church	364607	237607
1179949	II*	Shell House	371008	237848
1179854	II*	St Katherine's Chapel, Hall and Stable	371077	237646
1301821	II*	The Church House	371196	237721
1301759	II*	The Feathers Hotel	371098	237622
1301731	II*	The Master's House of St Katherines Hospital	371044	237658
1301848	II*	The Old Grammar School	371171	237729
1098841	II*	The Red House	379332	230056
1082838	II*	The Steppes	371039	237565
1082903	II*	The Town Council Offices	371126	237731
1082864	II*	Tudor House Antiques	370992	237882
1302708	II*	Walsopthorne Farmhouse	365029	242321
1224740	II*	Woodhouse Farmhouse	368995	241212

# Appendix 1

## 2021 NFCC Community Risk Calendar

# FIRE AND RESCUE CAMPAIGN CALENDAR 2021

www.nationalfirechiefs.org.uk  
www.firekills.campaign.gov.uk



	JAN	FEB	MAR	APR	MAY	JUNE	JULY	AUG	SEPT	OCT	NOV	DEC
Monthly Themes	Smaller Alarm Prevalence	Coasting	Smaller Alarm Testing	Smoking	Escape Routes	Outdoor Fire Safety	Coasting	Smaller Alarm Prevalence	Home Fire Safety	Smaller Alarm Testing	Domestic	Christmas
SATURDAY	1	1	1	1	1	1	1	1	1	1	1	1
SUNDAY	2	2	2	2	2	2	2	2	2	2	2	2
MONDAY	3	3	3	3	3	3	3	3	3	3	3	3
TUESDAY	4	4	4	4	4	4	4	4	4	4	4	4
WEDNESDAY	5	5	5	5	5	5	5	5	5	5	5	5
THURSDAY	6	6	6	6	6	6	6	6	6	6	6	6
FRIDAY	7	7	7	7	7	7	7	7	7	7	7	7
SATURDAY	8	8	8	8	8	8	8	8	8	8	8	8
SUNDAY	9	9	9	9	9	9	9	9	9	9	9	9
MONDAY	10	10	10	10	10	10	10	10	10	10	10	10
TUESDAY	11	11	11	11	11	11	11	11	11	11	11	11
WEDNESDAY	12	12	12	12	12	12	12	12	12	12	12	12
THURSDAY	13	13	13	13	13	13	13	13	13	13	13	13
FRIDAY	14	14	14	14	14	14	14	14	14	14	14	14
SATURDAY	15	15	15	15	15	15	15	15	15	15	15	15
SUNDAY	16	16	16	16	16	16	16	16	16	16	16	16
MONDAY	17	17	17	17	17	17	17	17	17	17	17	17
TUESDAY	18	18	18	18	18	18	18	18	18	18	18	18
WEDNESDAY	19	19	19	19	19	19	19	19	19	19	19	19
THURSDAY	20	20	20	20	20	20	20	20	20	20	20	20
FRIDAY	21	21	21	21	21	21	21	21	21	21	21	21
SATURDAY	22	22	22	22	22	22	22	22	22	22	22	22
SUNDAY	23	23	23	23	23	23	23	23	23	23	23	23
MONDAY	24	24	24	24	24	24	24	24	24	24	24	24
TUESDAY	25	25	25	25	25	25	25	25	25	25	25	25
WEDNESDAY	26	26	26	26	26	26	26	26	26	26	26	26
THURSDAY	27	27	27	27	27	27	27	27	27	27	27	27
FRIDAY	28	28	28	28	28	28	28	28	28	28	28	28
SATURDAY	29	29	29	29	29	29	29	29	29	29	29	29
SUNDAY	30	30	30	30	30	30	30	30	30	30	30	30
SUNDAY	31	31	31	31	31	31	31	31	31	31	31	31

